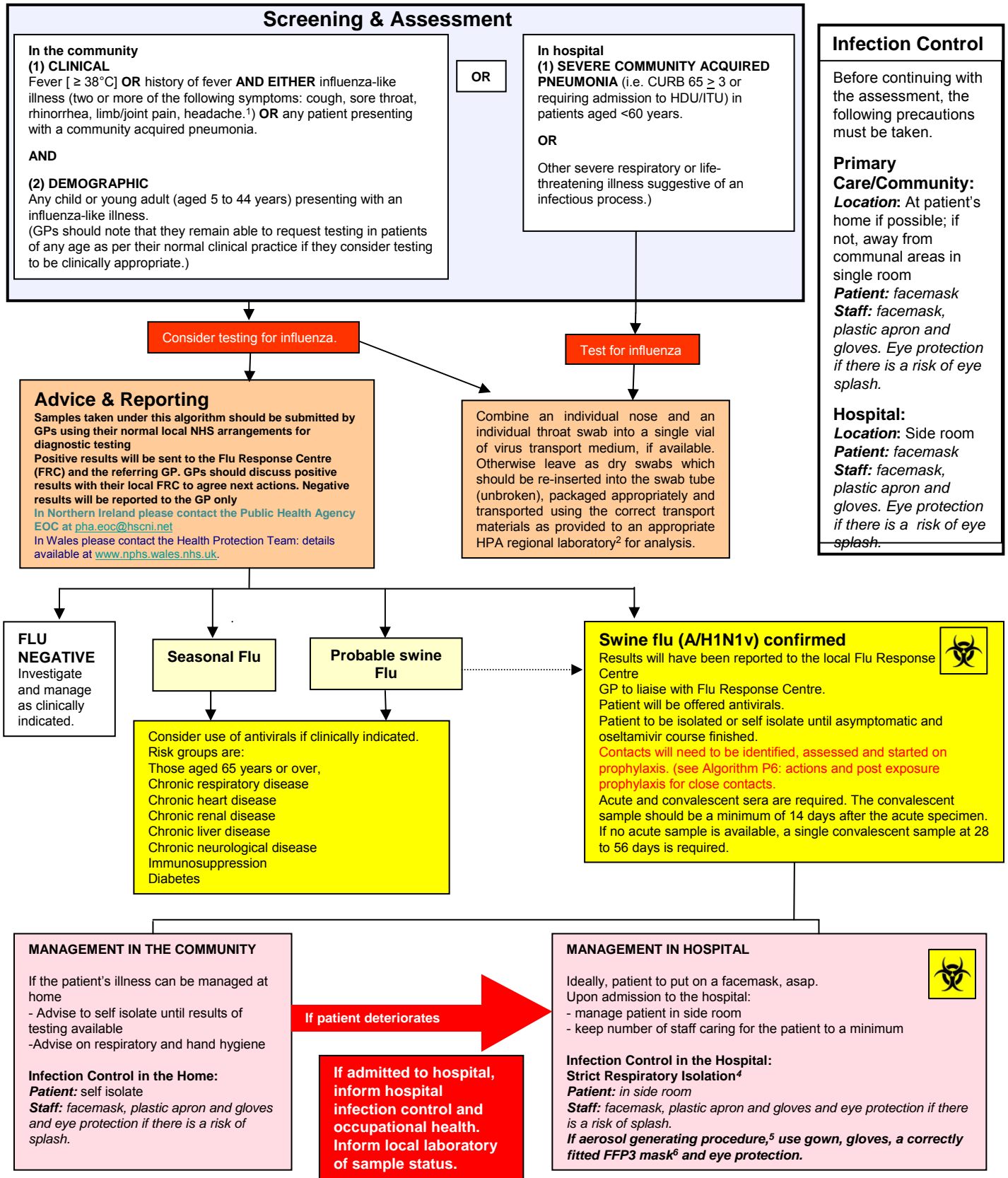


WHO PANDEMIC ALERT PHASE 6: Algorithm for the management of patients with influenza-like-illness – community or hospital

(for use with patients who have **not** had contact with a probable or confirmed case of swine influenza and have **not** travelled to an area affected by A/H1N1v)



Infection Control

Before continuing with the assessment, the following precautions must be taken.

Primary Care/Community:

Location: At patient's home if possible; if not, away from communal areas in single room
Patient: facemask
Staff: facemask, plastic apron and gloves. Eye protection if there is a risk of eye splash.

Hospital:
Location: Side room
Patient: facemask
Staff: facemask, plastic apron and gloves. Eye protection if there is a risk of eye splash.

Hospital:

Location: Side room
Patient: facemask
Staff: facemask, plastic apron and gloves. Eye protection if there is a risk of eye splash.

Footnotes:

- ¹ Vomiting and diarrhoea have been a feature of some of the reported cases of swine influenza A/H1N1v.
- ² HPA regional laboratories can be found at <http://www.hpa.org.uk/web/HPAweb&Page&HPAwebAutolListName/HPAweb/11538466742067p=11538466742065>.
- ³ Standard treatment dose of oseltamivir in adults (age >13 years old) is 75mg bd for 5 days. Standard treatment dose of zanamivir is 10mg bd for 5 days. (<http://www.medicines.org.uk/>) Treatment for seasonal flu should only be given within 48 hours of onset of symptoms however for swine influenza it can be started at any point that the patient is symptomatic and continue until the patient has recovered. Follow guidelines unless expert advice is to the contrary.
- ⁴ Infection control guidance is available at: http://www.hpa.org.uk/web/HPAwebFile/HPAweb_C/1238055328357.
- ⁵ Includes patients requiring Level 3 intensive care. See guidance for infection control in critical care at <http://www.hpa.org.uk/web/HPAweb&Page&HPAwebAutolListName/HPAweb/11919421711907p=1191942171190>.
- ⁶ FFP3 standard masks, see HSE guidelines: <http://www.hse.gov.uk/biosafety/diseases/pandemic.htm>.

In case of uncertainty, discuss with local Flu Response Centre.

Health Protection Agency <http://www.hpa.org.uk/>