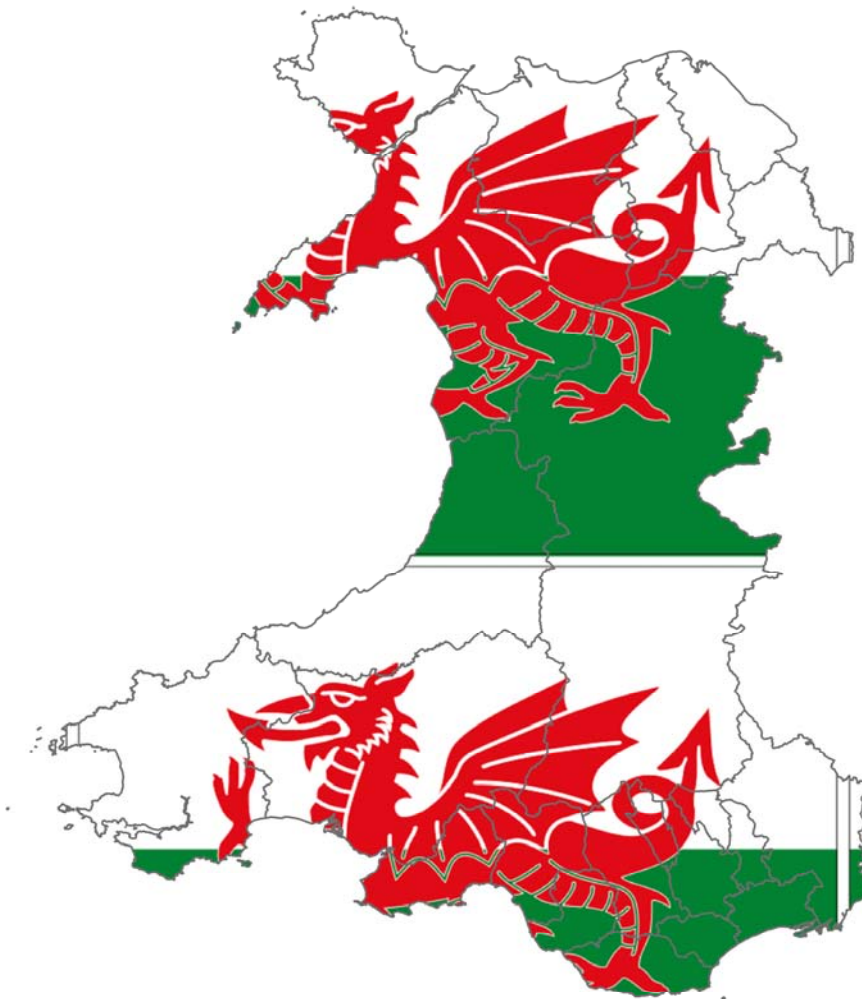




National Report for Wales
January 2008 – December 2010
Paediatric Intensive Care Audit Network



© Crown Copyright/database right 2011. An Ordnance Survey/ONS supplied service.

**Elizabeth Draper, Rachel Hobson, Caroline Lamming, Philip McShane,
Lee Norman, Roger Parslow & Sarah Skinner
Universities of Leeds and Leicester**

Key

A	Cambridge University Hospitals NHS Foundation Trust
B	Brighton & Sussex University Hospitals NHS Trust
C	Cardiff & Vale NHS Trust
D	Central Manchester & Manchester Children's University Hospitals NHS Trust
E	Great Ormond Street Hospital for Children NHS Trust
F	Guy's & St. Thomas' NHS Foundation Trust
G	Hull & East Yorkshire Hospitals NHS Trust
H	King's College Hospital NHS Trust
I	Leeds Teaching Hospitals NHS Trust
J	The Lewisham Hospital NHS Trust
K	Newcastle upon Tyne Hospitals NHS Foundation Trust
	K1 Newcastle General Hospital
	K2 Newcastle Freeman Hospital
	K3 Newcastle Royal Victoria Infirmary
L	University Hospital of North Staffordshire NHS Trust
M	Queens Medical Centre Nottingham University Hospitals NHS Trust
N	Oxford Radcliffe Hospitals NHS Trust
O	Royal Brompton & Harefield NHS Foundation Trust
P	Royal Liverpool Children's NHS Trust
Q	Sheffield Children's NHS Foundation Trust
	Q1 Sheffield Children's Hospital (NICU)
	Q2 Sheffield Children's Hospital (PICU)
R	Southampton University Hospitals NHS Trust
S	South Tees Hospitals NHS Trust
T	St. George's Healthcare NHS Trust
U	Imperial College Healthcare NHS Trust (SMH)
V	Birmingham Children's Hospital NHS Trust
W	University Hospitals Bristol NHS Foundation Trust
X	University Hospitals of Leicester NHS Trust
	X1 Leicester Glenfield Hospital
	X2 Leicester Royal Infirmary
Y	NHS Lothian – University Hospitals Division
Z	Barts and the London NHS Trust
ZA	NHS Greater Glasgow and Clyde – Women and Children's Division
ZB	The Royal Group of Hospitals and Dental Hospitals HSS Trust
ZC	HSE (Health Services Executive)
ZD	HSE (Health Services Executive)
ZE	Harley Street Clinic

Published in the UK by the Paediatric Intensive Care Audit Network (PICANet). This work is copyright. Apart from any use as permitted under the Copyright, Designs and Patents Act 1988, no part may be reproduced by any process without permission from PICANet.

Requests and enquiries concerning reproduction rights should be directed to PICANet at:

PICANet- Paediatric Epidemiology Group, Centre for Epidemiology and Biostatistics
The Leeds Institute of Genetics, Health and Therapeutics
Room 8.49, Worsley Building
University Of Leeds
Leeds, LS2 9JT
0113 343 8125

picanet@leeds.ac.uk

In all cases PICANet must be acknowledged as the source when reproducing or quoting any part of this publication. Please use the following format when citing this report:

Paediatric Intensive Care Audit Network National Report for Wales 2008 - 2010 (published December 2011): Universities of Leeds and Leicester.

CONTENTS

1	CONTENTS	3
2	ACKNOWLEDGEMENTS	6
3	FOREWORD	7
4	EXECUTIVE SUMMARY	8
5	DATA INCLUDED	9
5.1	Admissions by primary diagnostic group	9
5.2	Admissions by Local Health Board	9
5.3	Admissions by admission type	9
5.4	Retrieval data	10
5.5	Ventilation status	10
5.6	Standardised Mortality Ratios	10
6	TABLES AND FIGURES	11
Table 1	Admissions by age and sex, 2008 - 2010	11
Figure 1	Admissions by age and sex, 2008 - 2010	11
Table 2	Admissions by age (<1) and sex, 2008 - 2010	12
Figure 2	Admissions by age (<1) and sex, 2008 - 2010	12
Table 3	Admissions by age by NHS trust, 2008 - 2010	13
Table 4	Admissions by age (<1) by NHS trust, 2008 - 2010	14
Table 5	Admissions by age (16+) by NHS trust, 2008 - 2010	15
Table 6	Admissions by month and age, 2008 - 2010	16
Figure 6	Admissions by month and age, 2008 - 2010	16
Table 7	Admissions by month and primary diagnostic group, 2008 - 2010 ...	17
Figure 7	Admissions by month and primary diagnostic group, 2008 - 2010 ...	17
Table 8	Respiratory admissions by month and age, 2008 - 2010	18
Figure 8	Respiratory admissions by month and age, 2008 - 2010	18
Table 9	Admissions by month by NHS trust, 2008 - 2010	19
Table 10	Admissions by SHA / HB and year, 2008 - 2010	20
Figure 10	Map showing LHB boundaries	21
Table 11	Admissions by mortality risk group by NHS trust, 2008 - 2010	22
Table 12	Admissions by admission type and age, 2008 - 2010	23
Figure 12	Admissions by admission type, 2008 - 2010	23
Table 13	Admissions by admission type by NHS trust, 2008 - 2010	24
Table 14	Admissions by source of admission (admission type 'unplanned - other') by NHS trust, 2008 - 2010	25
Table 15	Admissions by care area admitted from (admission type 'unplanned - other'; admitted from hospital) by NHS trust, 2008 - 2010	26
Table 16	Admissions by primary diagnostic group and age, 2008 - 2010	27
Figure 16	Admissions by primary diagnostic group, 2008 - 2010	27
Table 17	Admissions by primary diagnostic group and age (16+), 2008 - 2010	28
Figure 17	Admissions by primary diagnostic group (16+), 2008 - 2010	28
Table 18	Admissions by primary diagnostic group by NHS trust, 2008 - 2010	29
Table 19	Admissions by primary diagnostic group (planned - following surgery) by NHS trust, 2008 - 2010	30
Table 20	Admissions by primary diagnostic group (unplanned - following surgery) by NHS trust, 2008 - 2010	31
Table 21	Admissions by primary diagnostic group (planned - other) by NHS trust, 2008 - 2010	32
Table 22	Admissions by primary diagnostic group (unplanned - other) by NHS trust, 2008 - 2010	33

Table 23	Most commonly returned Read Codes for primary reason for admission, 2008 - 2010.....	34
Table 24	Most commonly returned Read Codes for primary reason for 'unplanned - following surgery' admissions, 2008 - 2010	35
Table 25	Most commonly returned Read Codes for primary reason for 'unplanned - other' admission, 2008 - 2010	36
Table 26	Retrievals by team type and age, 2008 - 2010	37
Figure 26	Retrievals by team type, 2008 - 2010	37
Table 27	'Non-specialist team' retrievals by diagnostic group and age, 2008 - 2010	38
Table 28	Retrievals by retrieval type by NHS trust, 2008 - 2010	39
Table 29	Interventions received by NHS trust, 2008 - 2010	40
Table 30	Admissions by ventilation status and age, 2008 - 2010.....	41
Table 31	Admissions by ventilation status by NHS trust, 2008 - 2010	42
Table 32	Bed days by age and sex, 2008 - 2010	43
Figure 32	Bed days by age and sex, 2008 - 2010	43
Table 33	Bed days by age by NHS trust, 2008 - 2010.....	44
Table 34	Bed census by month, 2008 - 2010	45
Figure 34	Bed census by month, 2008 - 2010	45
Table 35	Bed census by NHS trust, 2008 - 2010.....	46
Figure 35a	Bed census by NHS trust, 2008.....	46
Figure 35b	Bed census by NHS trust, 2009.....	46
Figure 35c	Bed census by NHS trust, 2010.....	46
Table 36	Bed activity by month, 2008 - 2010.....	47
Figure 36	Bed activity by month, 2008 - 2010.....	47
Table 37	Bed activity by NHS trust, 2008 - 2010	48
Figure 37a	Bed activity by NHS trust, 2008	48
Figure 37b	Bed activity by NHS trust, 2009	48
Figure 37c	Bed activity by NHS trust, 2010	48
Table 38	Length of stay by age and NHS trust, 2008 - 2010.....	49
Table 39	Length of stay by primary diagnostic group and NHS trust, 2008 – 2010	50
Table 40	Admissions by length of stay by NHS trust, 2008- 2010.....	51
Table 41	Admissions by unit discharge status and age, 2008 - 2010.....	52
Table 42	Admissions by unit discharge status and age (<1), 2008 - 2010	53
Table 43	Admissions by unit discharge status and sex, 2008 - 2010	54
Table 44	Admissions by unit discharge status and sex (age <1), 2008 - 2010	55
Table 45	Admissions by unit discharge status by NHS trust, 2008 - 2010	56
Table 46	Admissions by unit discharge destination and age, 2008 - 2010.....	57
Table 47	Standardised mortality ratios by trust, 2008.....	58
Figure 47a	PICU Standardised mortality ratios by NHS trust with 99.9% control limits, 2008: unadjusted	58
Figure 47b	PICU Standardised mortality ratios by NHS trust with 99.9% control limits, 2008: risk adjusted (PIM).....	58
Table 48	Standardised mortality ratios by trust, 2009.....	59
Figure 48a	PICU Standardised mortality ratios by NHS trust with 99.9% control limits, 2009: unadjusted	59
Figure 48b	PICU Standardised mortality ratios by NHS trust with 99.9% control limits, 2009: risk adjusted (PIM).....	59
Figure 48c	PICU Standardised mortality ratios by NHS trust with 99.9% control limits, 2009: risk adjusted (PIM2).....	59
Table 49	Standardised mortality ratios by trust, 2010.....	60

Figure 49a	PICU Standardised mortality ratios by NHS trust with 99.9% control limits, 2010: unadjusted	60
Figure 49b	PICU Standardised mortality ratios by NHS trust with 99.9% control limits, 2010: risk adjusted (PIM).....	60
Figure 49c	PICU Standardised mortality ratios by NHS trust with 99.9% control limits, 2010: risk adjusted (PIM2).....	60
Table 50	Standardised mortality ratios combined by trust, 2008 - 2010.....	61
Figure 50a	PICU Standardised mortality ratios by NHS trust with 99.9% control limits, 2008 - 2010 combined: unadjusted	61
Figure 50b	PICU Standardised mortality ratios by NHS trust with 99.9% control limits, 2008 - 2010 combined: risk adjusted (PIM)	61
Table 51	Children by follow-up status and age, 2008 - 2010.....	62
Table 52	Children by follow-up status and age (<1), 2008 - 2010	63
Table 53	Children by follow-up status and sex, 2008 - 2010	64
Table 54	Children by follow-up status and sex (age<1), 2008 - 2010	65
Table 55	Children by follow-up status by NHS trust, 2008 - 2010	66
Table 56	Re-Admissions by NHS trust and source of previous admission, 2008 - 2010.....	67
Table 57	Number of admissions of individual children by their NHS trust of first admission, 2008 - 2010.....	68
Table 58	Number of individual children by NHS trust and diagnostic group of first admission, 2008 - 2010.....	69
Table 59	Individual child admissions by diagnostic group and readmission status, 2008 - 2010	70
Table 60	Age specific prevalence (per 100,000 per year) for admission to paediatric intensive care in England and Wales, 2008 - 2010	71
Table 61	Age-sex standardised prevalence (per 100,000 per year) for admissions to paediatric intensive care by LHB in Wales, 2008 - 2010.....	72
Figure 61	Age-sex standardised prevalence (per 100,000 per year) for admissions to paediatric intensive care by LHB in Wales, 2008 - 2010.....	72

2 Acknowledgements

The ongoing success of this international clinical audit is dependent on the hard work and commitment of a large number of individuals working within the paediatric intensive care community. We are very grateful to all the audit clerks, secretaries, nurses and doctors who support and contribute to the Paediatric Intensive Care Audit Network (PICANet) from their own paediatric intensive care units (PICUs).

PICANet was established in collaboration with the Paediatric Intensive Care Society (PICS) and their active support continues to be a key component of our successful progress. The PICANet Steering Group (SG) has patient, academic, clinical, government and NHS members all of whom are thanked for their continuing assistance and advice. Members of the Clinical Advisory Group (CAG) provide a formal interface between PICANet and clinical care teams and their valuable support and contribution is gratefully acknowledged.

We are also grateful for the support and commitment given by members of the PICU Families Group.

PICANet is funded by the National Clinical Audit & Patient Outcomes Programme, administered by Healthcare Quality Improvement Partnership (HQIP), Health Commission Wales Specialised Services, NHS Lothian/National Service Division NHS Scotland, the Royal Belfast Hospital for Sick Children, Our Lady's Children's Hospital Crumlin, the Children's University Hospital, Temple Street from Dublin, Ireland and The Harley Street Clinic.

The organisation and functioning of PICANet is dependent on IT programming and development from Martin Perkins (University of Leicester) and Tom Fleming (University of Leeds), who we thank for their essential contributions.

And finally, we would all like to express our warm thanks to Professor Tricia McKinney for her substantial contribution to setting up and running PICANet as principle investigator until her retirement in July 2010. Tricia's tenacity, attention to detail and ability to develop new ideas has driven PICANet forward over the years

3 Foreword

This is the seventh annual report describing where, when and why critically ill Welsh children receive intensive care treatment. PICANet provides the most reliable, validated data relating to activity and outcomes of paediatric intensive care units across the United Kingdom.

The period 2008-10 referred to in this report shows that annual admissions to PICU have remained broadly stable from year to year. There is still a very striking peak in the Winter months of admissions of infants from 0 – 1yrs, reflecting the seasonal pattern of bronchiolitis, especially due to RSV.

Anglesey and Torfaen continue to show higher prevalence of PICU admission than other areas , as has been the case in previous reports.

It is satisfying that all of the PICUs in which children resident in Wales are treated continue to show risk-adjusted mortality ratios well within control limits.

It remains important that these outcomes are being measured, validated and freely published, as it reassures the public, and the staff involved in caring for critically ill children, that the quality of care is being maintained. The team at the PICU in Cardiff consider that the work done by PICANET is integral to operating our service, both in terms of planning ahead, and in allowing us to demonstrate that we provide outcomes comparable to our peer group. I know this view is shared by our colleagues in the other PICUs covered by this report.

Dr Allan Wardhaugh
Consultant Paediatric Intensivist
PICU
University Hospital of Wales

4 Executive Summary 2011

- This report provides information on all children admitted to paediatric intensive care in Great Britain whose usual place of residence is Wales.
- Data are presented on 1888 paediatric intensive care admissions over the three year period 1 January 2008 – 31 December 2010.
- The number of children admitted decreased from 637 in 2008 to 657 in 2009, falling back to 594 in 2010.
- Nearly half (48%) of admissions are under one year of age and the male to female ratio is 1.38:1.
- Admissions to Cardiff & Vale NHS Trust represent nearly half (47%) of all Welsh children admitted to paediatric intensive care and most of the remaining children (43% of the total) are admitted to the Royal Liverpool Children's NHS Trust or the United Bristol Healthcare NHS Trust.
- Prevalence for admission varies more than two-fold between Health Boards
- Unplanned admissions accounted for 58% of all admissions
- 85% of admissions received invasive ventilation
- 9.959 bed days were provided for Welsh children treated in paediatric intensive care, 58% of which were received by patients under one year of age.
- Crude mortality for Welsh children treated in paediatric intensive care was 4.1%.

5 Data Included

This report is based on children admitted to paediatric intensive care units in England, Wales and Scotland whose usual place of residence is Wales. The data are presented for the three year period January 2008 – December 2010. All data are based on admissions aged 0 – 15 years unless clearly stated otherwise.

There are more than 30 participating NHS trusts or other governing bodies (located in England, Wales, Scotland and Northern Ireland), 27 of whom collected data for the entire reporting period. Glasgow began reporting in April 2007. Belfast began submitting data in April 2008. In addition PICANet now collects data from two centres in the Republic of Ireland.

This report should be read in conjunction with the National Report of the Paediatric Intensive Care Audit Network National Report January 2008 - December 2010 (published September 2011: Universities of Leeds and Leicester. ISBN 978 0 85316 303 9) and associated tables.

5.1 Admissions by primary diagnostic group

The primary reason for admission has been categorised into 13 diagnostic groups to enable a simple comparison between NHS trusts. The classification is based on CT3 (The Read Codes). The groups are mutually exclusive:

- Infection excludes any respiratory or gastrointestinal infection but includes meningitis
- Neurological disorders include neurovascular complications
- Oncology includes neuro-oncology (brain tumours)
- Other includes those diagnoses not covered by the other 12 groups

Read codes are five characters in length and can be made up of numbers, letters, or periods. The ordering of the individual characters does not indicate the hierarchy (e.g. patent ductus arteriosus (P70..) is a subset of congenital abnormality of ductus arteriosus (Xa6aC)).

5.2 Admissions by Local Health Board

The number of admissions by Local Health Board (HB) was obtained by linking the validated home addresses of children admitted to PICU to HB via the National Statistics Postcode Directory (NSPD).

5.3 Admissions by admission type

We have used the following definitions for admission type:

- An admission that is 'planned - following surgery' is one that the unit is aware of before the surgery begins and one that could have been delayed for 24 hours without risk (e.g. spinal surgery).
- An admission that is 'unplanned - following surgery' is one that the unit was not aware of before surgery began and one that could not have been delayed without risk (e.g. bleeding tonsillectomy).
- A 'planned - other' admission is any other planned admission that is not an emergency (e.g. liver biopsy).
- An 'unplanned - other' admission is one that the unit was not expecting and is therefore an emergency admission (e.g. status epilepticus).

Surgery is defined as undergoing all or part of a procedure or anaesthesia for a procedure in an operating theatre or anaesthetic room. Patients admitted from the operating theatre where surgery is not the main reason for admission (e.g. a patient with a head injury who is admitted from theatre after insertion of an ICP monitor) are not included here. In such patients the main reason for admission is head injury and thus the admission type would be 'unplanned - other'.

5.4 Retrieval data

Data are collected on whether or not a child was retrieved / transferred into the PICU. We have used the following definitions:

- 'Own team' identifies that your own team collected the child from the referring hospital.
- 'Other specialist team (PICU)' identifies that another PICU retrieval team transferred the child to your unit.
- 'Other specialist team (non PICU)' identifies that another transport team, not a PICU team (e.g. Accident and Emergency Department (A&E), theatre teams or neonatal teams), transferred the child to your unit.
- 'Non-specialist team' identifies that a non-PICU, non-specialist team transported the child to your unit (e.g. ward staff).

5.5 Ventilation status

Length of ventilation has been calculated in days. Any ventilation episode during the period midnight to midnight was counted as one complete day (e.g. a child intubated and ventilated at 23.45 on 7 March and extubated at 02.30 on 8 March would count as two days of ventilation). Intubation and extubation times are not recorded in the PICANet dataset therefore more precise ventilation duration times are not available.

5.6 Standardised Mortality Ratios

Tables and figures showing the standardised mortality ratios for all units have been reproduced from the National Report so that table and figure numbering is consistent across both reports. These tables include all patients admitted to PICU regardless of age. These ratios are calculated using the 'recalibrated' PIM2, as described in the 2011 Annual Report.

Table 1 Admissions by age and sex, 2008 - 2010

Age (Years)	Sex								Total	
	Male		Female		Ambiguous		Unknown			
	n	%	n	%	n	%	n	%	n	%
0	532	(59)	363	(41)	0	(0)	0	(0)	895	(47.4)
1	103	(54)	87	(46)	0	(0)	0	(0)	190	(10.1)
2	82	(64)	46	(36)	0	(0)	0	(0)	128	(6.8)
3	54	(61)	35	(39)	0	(0)	0	(0)	89	(4.7)
4	33	(49)	34	(51)	0	(0)	0	(0)	67	(3.5)
5	19	(40)	28	(60)	0	(0)	0	(0)	47	(2.5)
6	18	(46)	21	(54)	0	(0)	0	(0)	39	(2.1)
7	15	(58)	11	(42)	0	(0)	0	(0)	26	(1.4)
8	17	(68)	8	(32)	0	(0)	0	(0)	25	(1.3)
9	23	(66)	12	(34)	0	(0)	0	(0)	35	(1.9)
10	31	(70)	13	(30)	0	(0)	0	(0)	44	(2.3)
11	23	(59)	16	(41)	0	(0)	0	(0)	39	(2.1)
12	24	(50)	24	(50)	0	(0)	0	(0)	48	(2.5)
13	36	(46)	42	(54)	0	(0)	0	(0)	78	(4.1)
14	23	(39)	36	(61)	0	(0)	0	(0)	59	(3.1)
15	41	(52)	38	(48)	0	(0)	0	(0)	79	(4.2)
Total	1,074	(56.9)	814	(43.1)	0	(0.0)	0	(0.0)	1,888	

Figure 1 Admissions by age and sex, 2008 - 2010

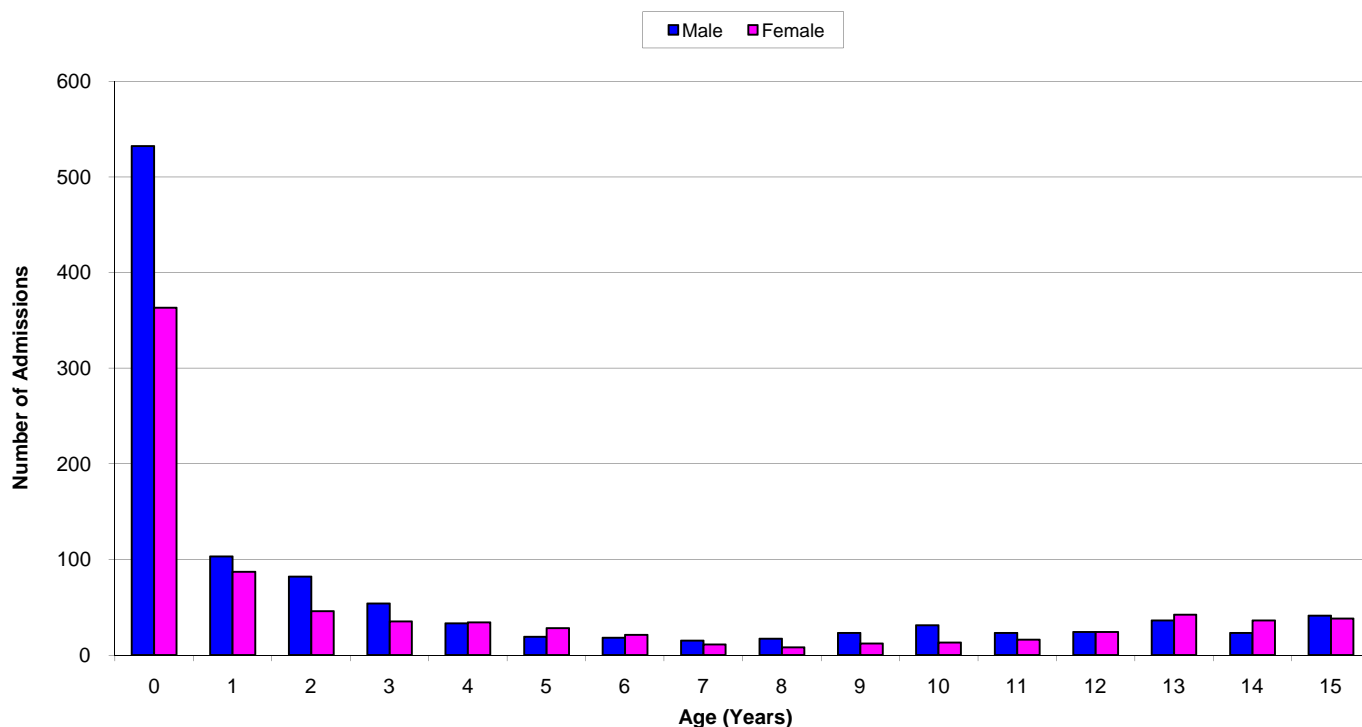


Table 2 Admissions by age (<1) and sex, 2008 - 2010

Age (Months)	Sex								Total	
	Male		Female		Ambiguous		Unknown			
	n	%	n	%	n	%	n	%	n	%
0	171	(58)	126	(42)	0	(0)	0	(0)	297	(33.2)
1	91	(61)	58	(39)	0	(0)	0	(0)	149	(16.6)
2	58	(64)	33	(36)	0	(0)	0	(0)	91	(10.2)
3	42	(60)	28	(40)	0	(0)	0	(0)	70	(7.8)
4	30	(56)	24	(44)	0	(0)	0	(0)	54	(6.0)
5	20	(57)	15	(43)	0	(0)	0	(0)	35	(3.9)
6	24	(63)	14	(37)	0	(0)	0	(0)	38	(4.2)
7	19	(56)	15	(44)	0	(0)	0	(0)	34	(3.8)
8	20	(59)	14	(41)	0	(0)	0	(0)	34	(3.8)
9	19	(63)	11	(37)	0	(0)	0	(0)	30	(3.4)
10	22	(67)	11	(33)	0	(0)	0	(0)	33	(3.7)
11	16	(53)	14	(47)	0	(0)	0	(0)	30	(3.4)
Total	532	(59.4)	363	(40.6)	0	(0.0)	0	(0.0)	895	

Figure 2 Admissions by age (<1) and sex, 2008 - 2010

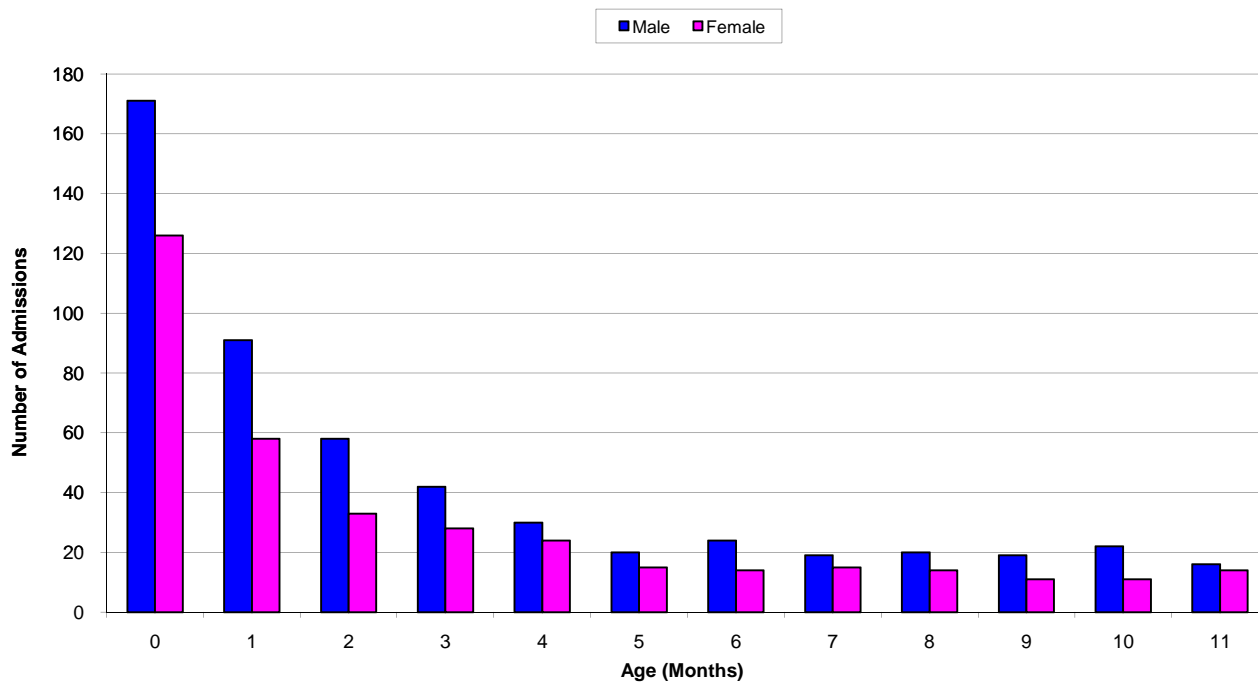


Table 3 Admissions by age by NHS trust, 2008 - 2010

Admission year	NHS Trust	Age Group (Years)								Total	
		<1		1-4		5-10		11-15			
		n	%	n	%	n	%	n	%	n	%
2008	C	117	(39)	76	(25)	41	(14)	67	(22)	301	(47.3)
	D	1	(20)	1	(20)	2	(40)	1	(20)	5	(0.8)
	E1	6	(67)	2	(22)	1	(11)	0	(0)	9	(1.4)
	E2	4	(57)	0	(0)	0	(0)	3	(43)	7	(1.1)
	F	12	(86)	2	(14)	0	(0)	0	(0)	14	(2.2)
	H	0	(0)	1	(100)	0	(0)	0	(0)	1	(0.2)
	K	0	(0)	1	(50)	0	(0)	1	(50)	2	(0.3)
	L	4	(27)	0	(0)	3	(20)	8	(53)	15	(2.4)
	N	0	(0)	1	(50)	0	(0)	1	(50)	2	(0.3)
	P	57	(43)	43	(32)	12	(9)	21	(16)	133	(20.9)
	R	0	(0)	0	(0)	1	(100)	0	(0)	1	(0.2)
	U	1	(100)	0	(0)	0	(0)	0	(0)	1	(0.2)
	V	14	(52)	8	(30)	3	(11)	2	(7)	27	(4.2)
	W	64	(55)	28	(24)	15	(13)	9	(8)	116	(18.2)
	X	2	(100)	0	(0)	0	(0)	0	(0)	2	(0.3)
ZA	0	(0)	0	(0)	0	(0)	1	(100)	1	(0.2)	
2008 Total		282	(44.3)	163	(25.6)	78	(12.2)	114	(17.9)	637	
2009	C	137	(42)	81	(25)	36	(11)	76	(23)	330	(50.2)
	D	2	(50)	0	(0)	1	(25)	1	(25)	4	(0.6)
	E1	1	(50)	1	(50)	0	(0)	0	(0)	2	(0.3)
	F	8	(100)	0	(0)	0	(0)	0	(0)	8	(1.2)
	H	1	(100)	0	(0)	0	(0)	0	(0)	1	(0.2)
	I	1	(100)	0	(0)	0	(0)	0	(0)	1	(0.2)
	L	1	(33)	1	(33)	1	(33)	0	(0)	3	(0.5)
	N	1	(100)	0	(0)	0	(0)	0	(0)	1	(0.2)
	O	0	(0)	1	(100)	0	(0)	0	(0)	1	(0.2)
	P	82	(57)	37	(26)	13	(9)	12	(8)	144	(21.9)
	Q	1	(100)	0	(0)	0	(0)	0	(0)	1	(0.2)
	R	2	(100)	0	(0)	0	(0)	0	(0)	2	(0.3)
	V	11	(46)	2	(8)	6	(25)	5	(21)	24	(3.7)
	W	91	(70)	26	(20)	10	(8)	3	(2)	130	(19.8)
	X	4	(100)	0	(0)	0	(0)	0	(0)	4	(0.6)
ZA	1	(100)	0	(0)	0	(0)	0	(0)	1	(0.2)	
2009 Total		344	(52.4)	149	(22.7)	67	(10.2)	97	(14.8)	657	
2010	B	0	(0)	1	(100)	0	(0)	0	(0)	1	(0.2)
	C	82	(33)	80	(32)	35	(14)	52	(21)	249	(41.9)
	D	3	(60)	1	(20)	1	(20)	0	(0)	5	(0.8)
	E1	3	(30)	3	(30)	0	(0)	4	(40)	10	(1.7)
	E2	4	(67)	1	(17)	0	(0)	1	(17)	6	(1.0)
	F	4	(80)	1	(20)	0	(0)	0	(0)	5	(0.8)
	I	0	(0)	0	(0)	0	(0)	1	(100)	1	(0.2)
	K	0	(0)	3	(100)	0	(0)	0	(0)	3	(0.5)
	L	0	(0)	2	(67)	0	(0)	1	(33)	3	(0.5)
	M	0	(0)	1	(100)	0	(0)	0	(0)	1	(0.2)
	O	0	(0)	1	(100)	0	(0)	0	(0)	1	(0.2)
	P	79	(54)	32	(22)	15	(10)	19	(13)	145	(24.4)
	R	0	(0)	1	(100)	0	(0)	0	(0)	1	(0.2)
	U	1	(100)	0	(0)	0	(0)	0	(0)	1	(0.2)
	V	11	(50)	2	(9)	5	(23)	4	(18)	22	(3.7)
W	80	(58)	33	(24)	15	(11)	10	(7)	138	(23.2)	
X	2	(100)	0	(0)	0	(0)	0	(0)	2	(0.3)	
2010 Total		269	(45.3)	162	(27.3)	71	(12.0)	92	(15.5)	594	
Grand Total		895	(47.4)	474	(25.1)	216	(11.4)	303	(16.0)	1,888	

Table 4 Admissions by age (<1) by NHS trust, 2008 - 2010

Admission year	NHS Trust	Age Group (Months)								Total	
		<1		1-2		3-5		6-11			
		n	%	n	%	n	%	n	%	n	%
2008	C	24	(21)	40	(34)	23	(20)	30	(26)	117	(41.5)
	D	0	(0)	0	(0)	0	(0)	1	(100)	1	(0.4)
	E1	5	(83)	1	(17)	0	(0)	0	(0)	6	(2.1)
	E2	3	(75)	1	(25)	0	(0)	0	(0)	4	(1.4)
	F	5	(42)	1	(8)	1	(8)	5	(42)	12	(4.3)
	L	0	(0)	3	(75)	1	(25)	0	(0)	4	(1.4)
	P	28	(49)	14	(25)	11	(19)	4	(7)	57	(20.2)
	U	0	(0)	1	(100)	0	(0)	0	(0)	1	(0.4)
	V	7	(50)	2	(14)	3	(21)	2	(14)	14	(5.0)
	W	20	(31)	10	(16)	17	(27)	17	(27)	64	(22.7)
	X	2	(100)	0	(0)	0	(0)	0	(0)	2	(0.7)
2008 Total		94	(33.3)	73	(25.9)	56	(19.9)	59	(20.9)	282	
2009	C	28	(20)	48	(35)	22	(16)	39	(28)	137	(39.8)
	D	0	(0)	0	(0)	0	(0)	2	(100)	2	(0.6)
	E1	0	(0)	0	(0)	1	(100)	0	(0)	1	(0.3)
	F	3	(38)	2	(25)	3	(38)	0	(0)	8	(2.3)
	H	0	(0)	0	(0)	1	(100)	0	(0)	1	(0.3)
	I	1	(100)	0	(0)	0	(0)	0	(0)	1	(0.3)
	L	1	(100)	0	(0)	0	(0)	0	(0)	1	(0.3)
	N	1	(100)	0	(0)	0	(0)	0	(0)	1	(0.3)
	P	37	(45)	23	(28)	9	(11)	13	(16)	82	(23.8)
	Q	1	(100)	0	(0)	0	(0)	0	(0)	1	(0.3)
	R	1	(50)	1	(50)	0	(0)	0	(0)	2	(0.6)
	V	4	(36)	1	(9)	4	(36)	2	(18)	11	(3.2)
	W	34	(37)	22	(24)	16	(18)	19	(21)	91	(26.5)
	X	2	(50)	2	(50)	0	(0)	0	(0)	4	(1.2)
	ZA	0	(0)	1	(100)	0	(0)	0	(0)	1	(0.3)
	2009 Total		113	(32.8)	100	(29.1)	56	(16.3)	75	(21.8)	344
2010	C	11	(13)	30	(37)	15	(18)	26	(32)	82	(30.5)
	D	0	(0)	1	(33)	0	(0)	2	(67)	3	(1.1)
	E1	1	(33)	1	(33)	0	(0)	1	(33)	3	(1.1)
	E2	1	(25)	0	(0)	0	(0)	3	(75)	4	(1.5)
	F	2	(50)	2	(50)	0	(0)	0	(0)	4	(1.5)
	P	42	(53)	21	(27)	9	(11)	7	(9)	79	(29.4)
	U	0	(0)	0	(0)	0	(0)	1	(100)	1	(0.4)
	V	2	(18)	2	(18)	4	(36)	3	(27)	11	(4.1)
	W	29	(36)	10	(13)	19	(24)	22	(28)	80	(29.7)
	X	2	(100)	0	(0)	0	(0)	0	(0)	2	(0.7)
2010 Total		90	(33.5)	67	(24.9)	47	(17.5)	65	(24.2)	269	
Grand Total		297	(33.2)	240	(26.8)	159	(17.8)	199	(22.2)	895	

Table 5 Admissions by age (16+) by NHS trust, 2008 - 2010

Admission year	NHS Trust	Age Group (Years)								Total	
		16		17-20		21-25		26+			
		n	%	n	%	n	%	n	%	n	%
2008	C	2	(100)	0	(0)	0	(0)	0	(0)	2	(12.5)
	E1	0	(0)	1	(100)	0	(0)	0	(0)	1	(6.3)
	L	3	(50)	3	(50)	0	(0)	0	(0)	6	(37.5)
	P	3	(60)	2	(40)	0	(0)	0	(0)	5	(31.3)
	Q	0	(0)	0	(0)	1	(100)	0	(0)	1	(6.3)
	W	0	(0)	1	(100)	0	(0)	0	(0)	1	(6.3)
2008 Total		8	(50.0)	7	(43.8)	1	(6.3)	0	(0.0)	16	
2009	C	1	(100)	0	(0)	0	(0)	0	(0)	1	(9.1)
	H	1	(100)	0	(0)	0	(0)	0	(0)	1	(9.1)
	K	0	(0)	1	(100)	0	(0)	0	(0)	1	(9.1)
	L	2	(67)	1	(33)	0	(0)	0	(0)	3	(27.3)
	P	3	(75)	1	(25)	0	(0)	0	(0)	4	(36.4)
	W	1	(100)	0	(0)	0	(0)	0	(0)	1	(9.1)
2009 Total		8	(72.7)	3	(27.3)	0	(0.0)	0	(0.0)	11	
2010	C	2	(67)	1	(33)	0	(0)	0	(0)	3	(27.3)
	K	1	(50)	0	(0)	1	(50)	0	(0)	2	(18.2)
	L	0	(0)	2	(100)	0	(0)	0	(0)	2	(18.2)
	P	1	(33)	2	(67)	0	(0)	0	(0)	3	(27.3)
	V	1	(100)	0	(0)	0	(0)	0	(0)	1	(9.1)
2010 Total		5	(45.5)	5	(45.5)	1	(9.1)	0	(0.0)	11	
Grand Total		21	(55.3)	15	(39.5)	2	(5.3)	0	(0.0)	38	

Table 6 Admissions by month and age, 2008 - 2010

Admission year	Month	Age Group (Years)								Total	
		<1		1-4		5-10		11-15		n	%
		n	%	n	%	n	%	n	%		
2008	1	34	(57)	9	(15)	9	(15)	8	(13)	60	(9.4)
	2	31	(63)	3	(6)	4	(8)	11	(22)	49	(7.7)
	3	21	(41)	15	(29)	8	(16)	7	(14)	51	(8.0)
	4	16	(34)	17	(36)	4	(9)	10	(21)	47	(7.4)
	5	16	(30)	21	(39)	10	(19)	7	(13)	54	(8.5)
	6	19	(36)	16	(30)	9	(17)	9	(17)	53	(8.3)
	7	20	(40)	16	(32)	5	(10)	9	(18)	50	(7.8)
	8	20	(43)	8	(17)	4	(9)	14	(30)	46	(7.2)
	9	21	(40)	11	(21)	6	(12)	14	(27)	52	(8.2)
	10	19	(32)	20	(33)	6	(10)	15	(25)	60	(9.4)
	11	32	(53)	15	(25)	8	(13)	5	(8)	60	(9.4)
	12	33	(60)	12	(22)	5	(9)	5	(9)	55	(8.6)
2008 Total		282	(44.3)	163	(25.6)	78	(12.2)	114	(17.9)	637	
2009	1	36	(68)	9	(17)	2	(4)	6	(11)	53	(8.1)
	2	35	(56)	15	(24)	9	(15)	3	(5)	62	(9.4)
	3	29	(42)	21	(30)	9	(13)	10	(14)	69	(10.5)
	4	32	(60)	9	(17)	4	(8)	8	(15)	53	(8.1)
	5	18	(46)	8	(21)	5	(13)	8	(21)	39	(5.9)
	6	21	(46)	7	(15)	8	(17)	10	(22)	46	(7.0)
	7	18	(36)	16	(32)	6	(12)	10	(20)	50	(7.6)
	8	30	(53)	12	(21)	4	(7)	11	(19)	57	(8.7)
	9	28	(60)	7	(15)	3	(6)	9	(19)	47	(7.2)
	10	22	(49)	17	(38)	4	(9)	2	(4)	45	(6.8)
	11	31	(50)	12	(19)	7	(11)	12	(19)	62	(9.4)
	12	44	(59)	16	(22)	6	(8)	8	(11)	74	(11.3)
2009 Total		344	(52.4)	149	(22.7)	67	(10.2)	97	(14.8)	657	
2010	1	28	(48)	17	(29)	3	(5)	10	(17)	58	(9.8)
	2	20	(53)	11	(29)	3	(8)	4	(11)	38	(6.4)
	3	21	(40)	16	(31)	5	(10)	10	(19)	52	(8.8)
	4	22	(46)	13	(27)	9	(19)	4	(8)	48	(8.1)
	5	20	(41)	11	(22)	6	(12)	12	(24)	49	(8.2)
	6	17	(33)	18	(35)	10	(19)	7	(13)	52	(8.8)
	7	24	(45)	11	(21)	8	(15)	10	(19)	53	(8.9)
	8	24	(52)	14	(30)	1	(2)	7	(15)	46	(7.7)
	9	23	(51)	9	(20)	7	(16)	6	(13)	45	(7.6)
	10	21	(40)	16	(30)	7	(13)	9	(17)	53	(8.9)
	11	22	(48)	14	(30)	5	(11)	5	(11)	46	(7.7)
	12	27	(50)	12	(22)	7	(13)	8	(15)	54	(9.1)
2010 Total		269	(45.3)	162	(27.3)	71	(12.0)	92	(15.5)	594	
Grand Total		895	(47.4)	474	(25.1)	216	(11.4)	303	(16.0)	1,888	

Figure 6 Admissions by month and age, 2008 - 2010

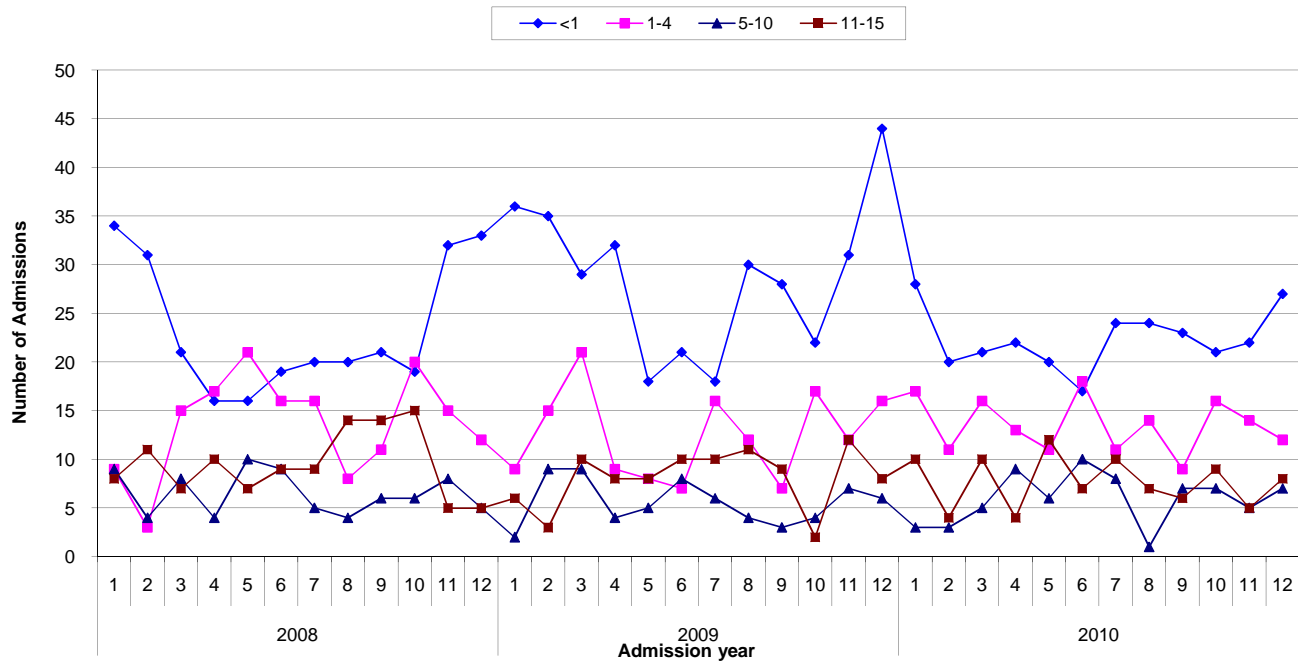


Table 7 Admissions by month and primary diagnostic group, 2008 - 2010

Admission year	Month	Blood / lymphatic		Body wall and cavities		Cardiovascular		Endocrine / metabolic		Gastrointestinal		Diagnosis Group		Infection		Multisystem		Musculoskeletal		Neurological		Oncology		Other		Respiratory		Trauma		Unknown		Total	
		n	%	n	%	n	%	n	%	n	%	n	%	n	%	n	%	n	%	n	%	n	%	n	%	n	%	n	%	n	%		
2008	1	0	(0)	0	(0)	12	(20)	2	(3)	2	(3)	7	(12)	0	(0)	3	(5)	11	(18)	2	(3)	0	(0)	20	(33)	1	(2)	0	(0)	60	(9.4)		
	2	0	(0)	1	(2)	18	(37)	2	(4)	0	(0)	4	(8)	0	(0)	5	(10)	4	(8)	2	(4)	0	(0)	11	(22)	2	(4)	0	(0)	49	(7.7)		
	3	0	(0)	0	(0)	16	(31)	2	(4)	1	(2)	3	(6)	0	(0)	4	(8)	7	(14)	3	(6)	5	(10)	8	(16)	2	(4)	0	(0)	51	(8.0)		
	4	0	(0)	1	(2)	18	(38)	1	(2)	3	(6)	5	(11)	0	(0)	4	(9)	5	(11)	1	(2)	1	(2)	5	(11)	3	(6)	0	(0)	47	(7.4)		
	5	0	(0)	2	(4)	11	(20)	2	(4)	1	(2)	3	(6)	0	(0)	9	(17)	7	(13)	2	(4)	4	(7)	11	(20)	2	(4)	0	(0)	54	(8.5)		
	6	0	(0)	0	(0)	18	(34)	0	(0)	5	(9)	7	(13)	0	(0)	1	(2)	3	(6)	2	(4)	2	(4)	14	(26)	1	(2)	0	(0)	53	(8.3)		
	7	0	(0)	1	(2)	16	(32)	0	(0)	0	(0)	4	(8)	0	(0)	5	(10)	5	(10)	1	(2)	1	(2)	14	(28)	3	(6)	0	(0)	50	(7.8)		
	8	1	(2)	0	(0)	16	(35)	0	(0)	3	(7)	4	(9)	1	(2)	7	(15)	7	(15)	0	(0)	1	(2)	6	(13)	0	(0)	0	(0)	46	(7.2)		
	9	1	(2)	2	(4)	13	(25)	2	(4)	2	(4)	1	(2)	0	(0)	8	(15)	5	(10)	0	(0)	3	(6)	12	(23)	3	(6)	0	(0)	52	(8.2)		
	10	1	(2)	2	(3)	13	(22)	1	(2)	1	(2)	5	(8)	1	(2)	6	(10)	9	(15)	3	(5)	7	(12)	10	(17)	1	(2)	0	(0)	60	(9.4)		
	11	0	(0)	0	(0)	15	(25)	0	(0)	3	(5)	5	(8)	0	(0)	2	(3)	6	(10)	2	(3)	1	(2)	24	(40)	2	(3)	0	(0)	60	(9.4)		
	12	0	(0)	1	(2)	14	(25)	1	(2)	3	(5)	2	(4)	0	(0)	2	(4)	4	(7)	1	(2)	1	(2)	24	(44)	2	(4)	0	(0)	55	(8.6)		
2008 Total		3	(0.5)	10	(1.6)	180	(28.3)	13	(2.0)	24	(3.8)	50	(7.8)	2	(0.3)	56	(8.8)	73	(11.5)	19	(3.0)	26	(4.1)	159	(25.0)	22	(3.5)	0	(0.0)	637			
2009	1	0	(0)	0	(0)	14	(26)	2	(4)	0	(0)	5	(9)	0	(0)	1	(2)	4	(8)	0	(0)	1	(2)	24	(45)	2	(4)	0	(0)	53	(8.1)		
	2	0	(0)	4	(6)	19	(31)	0	(0)	1	(2)	2	(3)	0	(0)	4	(6)	9	(15)	0	(0)	3	(5)	18	(29)	2	(3)	0	(0)	62	(9.4)		
	3	0	(0)	0	(0)	25	(36)	1	(1)	3	(4)	3	(4)	0	(0)	6	(9)	7	(10)	0	(0)	3	(4)	19	(28)	2	(3)	0	(0)	69	(10.5)		
	4	0	(0)	1	(2)	23	(43)	0	(0)	1	(2)	11	(21)	0	(0)	0	(0)	5	(9)	2	(4)	3	(6)	6	(11)	1	(2)	0	(0)	53	(8.1)		
	5	1	(3)	0	(0)	14	(36)	0	(0)	1	(3)	2	(5)	0	(0)	5	(13)	5	(13)	1	(3)	4	(10)	5	(13)	1	(3)	0	(0)	39	(5.9)		
	6	2	(4)	2	(4)	14	(30)	1	(2)	4	(9)	3	(7)	0	(0)	7	(15)	5	(11)	2	(4)	0	(0)	5	(11)	1	(2)	0	(0)	46	(7.0)		
	7	0	(0)	3	(6)	17	(34)	1	(2)	0	(0)	4	(8)	0	(0)	10	(20)	3	(6)	0	(0)	3	(6)	6	(12)	3	(6)	0	(0)	50	(7.6)		
	8	0	(0)	1	(2)	22	(39)	2	(4)	3	(5)	3	(5)	0	(0)	10	(18)	3	(5)	0	(0)	2	(4)	11	(19)	0	(0)	0	(0)	57	(8.7)		
	9	0	(0)	1	(2)	16	(34)	0	(0)	1	(2)	3	(6)	0	(0)	6	(13)	6	(13)	0	(0)	0	(0)	12	(26)	2	(4)	0	(0)	47	(7.2)		
	10	0	(0)	1	(2)	22	(49)	2	(4)	1	(2)	1	(2)	0	(0)	3	(7)	4	(9)	1	(2)	3	(7)	7	(16)	0	(0)	0	(0)	45	(6.8)		
	11	0	(0)	1	(2)	18	(29)	0	(0)	5	(8)	12	(19)	1	(2)	6	(10)	5	(8)	1	(2)	1	(2)	11	(18)	1	(2)	0	(0)	62	(9.4)		
	12	1	(1)	1	(1)	19	(26)	0	(0)	4	(5)	5	(7)	1	(1)	5	(7)	6	(8)	0	(0)	0	(0)	29	(39)	3	(4)	0	(0)	74	(11.3)		
2009 Total		4	(0.6)	15	(2.3)	223	(33.9)	9	(1.4)	24	(3.7)	54	(8.2)	2	(0.3)	63	(9.6)	62	(9.4)	7	(1.1)	23	(3.5)	153	(23.3)	18	(2.7)	0	(0.0)	657			
2010	1	0	(0)	0	(0)	20	(34)	1	(2)	1	(2)	7	(12)	3	(5)	5	(9)	5	(9)	0	(0)	0	(0)	11	(19)	4	(7)	1	(2)	58	(9.8)		
	2	1	(3)	0	(0)	15	(39)	0	(0)	2	(5)	4	(11)	0	(0)	3	(8)	4	(11)	0	(0)	1	(3)	8	(21)	0	(0)	0	(0)	38	(6.4)		
	3	0	(0)	0	(0)	19	(37)	0	(0)	1	(2)	6	(12)	0	(0)	4	(8)	8	(15)	1	(2)	2	(4)	9	(17)	2	(4)	0	(0)	52	(8.8)		
	4	1	(2)	1	(2)	17	(35)	1	(2)	1	(2)	2	(4)	0	(0)	3	(6)	8	(17)	0	(0)	1	(2)	9	(19)	4	(8)	0	(0)	48	(8.1)		
	5	0	(0)	2	(4)	16	(33)	0	(0)	1	(2)	3	(6)	0	(0)	3	(6)	5	(10)	2	(4)	2	(4)	12	(24)	3	(6)	0	(0)	49	(8.2)		
	6	0	(0)	2	(4)	24	(46)	0	(0)	1	(2)	1	(2)	0	(0)	4	(8)	8	(15)	0	(0)	1	(2)	11	(21)	0	(0)	0	(0)	52	(8.8)		
	7	0	(0)	2	(4)	19	(36)	4	(8)	2	(4)	3	(6)	0	(0)	4	(8)	4	(8)	0	(0)	3	(6)	8	(15)	4	(8)	0	(0)	53	(8.9)		
	8	0	(0)	1	(2)	20	(43)	0	(0)	2	(4)	5	(11)	0	(0)	3	(7)	4	(9)	0	(0)	2	(4)	7	(15)	2	(4)	0	(0)	46	(7.7)		
	9	0	(0)	0	(0)	19	(42)	0	(0)	5	(11)	1	(2)	0	(0)	1	(2)	4	(9)	0	(0)	1	(2)	12	(27)	2	(4)	0	(0)	45	(7.6)		
	10	0	(0)	0	(0)	24	(45)	0	(0)	4	(8)	1	(2)	1	(2)	2	(4)	7	(13)	0	(0)	3	(6)	11	(21)	0	(0)	0	(0)	53	(8.9)		
	11	0	(0)	0	(0)	15	(33)	1	(2)	1	(2)	2	(4)	0	(0)	0	(0)	3	(7)	0	(0)	4	(9)	18	(39)	2	(4)	0	(0)	46	(7.7)		
	12	0	(0)	0	(0)	12	(22)	1	(2)	3	(6)	6	(11)	0	(0)	3	(6)	8	(15)	0	(0)	1	(2)	18	(33)	2	(4)	0	(0)	54	(9.1)		
2010 Total		2	(0.3)	8	(1.3)	220	(37.0)	8	(1.3)	24	(4.0)	41	(6.9)	4	(0.7)	35	(5.9)	68	(11.4)	3	(0.5)	21	(3.5)	134	(22.6)	25	(4.2)	1	(0.2)	594			
Grand Total		9	(0.5)	33	(1.7)	623	(33.0)	30	(1.6)	72	(3.8)	145	(7.7)	8	(0.4)	154	(8.2)	203	(10.8)	29	(1.5)	70	(3.7)	446	(23.6)	65	(3.4)	1	(0.1)	1,888			

Figure 7 Admissions by month and primary diagnostic group, 2008 - 2010

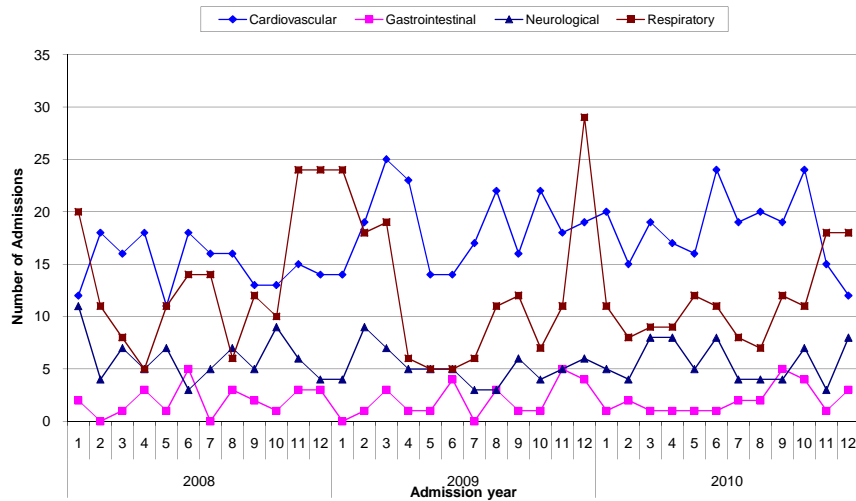


Table 8 Respiratory admissions by month and age, 2008 - 2010

Admission year	Month	Age Group (Years)								Total	
		<1		1-4		5-10		11-15		n	%
2008	1	16	(80)	2	(10)	1	(5)	1	(5)	20	(12.6)
	2	8	(73)	0	(0)	2	(18)	1	(9)	11	(6.9)
	3	7	(88)	1	(13)	0	(0)	0	(0)	8	(5.0)
	4	0	(0)	2	(40)	1	(20)	2	(40)	5	(3.1)
	5	4	(36)	4	(36)	2	(18)	1	(9)	11	(6.9)
	6	6	(43)	4	(29)	2	(14)	2	(14)	14	(8.8)
	7	9	(64)	4	(29)	0	(0)	1	(7)	14	(8.8)
	8	3	(50)	1	(17)	0	(0)	2	(33)	6	(3.8)
	9	7	(58)	4	(33)	0	(0)	1	(8)	12	(7.5)
	10	4	(40)	3	(30)	0	(0)	3	(30)	10	(6.3)
	11	14	(58)	7	(29)	1	(4)	2	(8)	24	(15.1)
	12	16	(67)	5	(21)	1	(4)	2	(8)	24	(15.1)
2008 Total		94	(59.1)	37	(23.3)	10	(6.3)	18	(11.3)	159	
2009	1	18	(75)	4	(17)	0	(0)	2	(8)	24	(15.7)
	2	10	(56)	5	(28)	3	(17)	0	(0)	18	(11.8)
	3	11	(58)	7	(37)	0	(0)	1	(5)	19	(12.4)
	4	2	(33)	3	(50)	0	(0)	1	(17)	6	(3.9)
	5	4	(80)	1	(20)	0	(0)	0	(0)	5	(3.3)
	6	1	(20)	1	(20)	3	(60)	0	(0)	5	(3.3)
	7	3	(50)	2	(33)	0	(0)	1	(17)	6	(3.9)
	8	7	(64)	2	(18)	2	(18)	0	(0)	11	(7.2)
	9	7	(58)	5	(42)	0	(0)	0	(0)	12	(7.8)
	10	2	(29)	4	(57)	1	(14)	0	(0)	7	(4.6)
	11	7	(64)	2	(18)	2	(18)	0	(0)	11	(7.2)
	12	18	(62)	7	(24)	2	(7)	2	(7)	29	(19.0)
2009 Total		90	(58.8)	43	(28.1)	13	(8.5)	7	(4.6)	153	
2010	1	7	(64)	3	(27)	0	(0)	1	(9)	11	(8.2)
	2	6	(75)	2	(25)	0	(0)	0	(0)	8	(6.0)
	3	4	(44)	5	(56)	0	(0)	0	(0)	9	(6.7)
	4	7	(78)	1	(11)	1	(11)	0	(0)	9	(6.7)
	5	5	(42)	3	(25)	0	(0)	4	(33)	12	(9.0)
	6	4	(36)	5	(45)	2	(18)	0	(0)	11	(8.2)
	7	5	(63)	2	(25)	0	(0)	1	(13)	8	(6.0)
	8	5	(71)	2	(29)	0	(0)	0	(0)	7	(5.2)
	9	3	(25)	3	(25)	3	(25)	3	(25)	12	(9.0)
	10	4	(36)	3	(27)	1	(9)	3	(27)	11	(8.2)
	11	10	(56)	6	(33)	1	(6)	1	(6)	18	(13.4)
	12	12	(67)	3	(17)	2	(11)	1	(6)	18	(13.4)
2010 Total		72	(53.7)	38	(28.4)	10	(7.5)	14	(10.4)	134	
Grand Total		256	(57.4)	118	(26.5)	33	(7.4)	39	(8.7)	446	

Figure 8 Respiratory admissions by month and age, 2008 - 2010

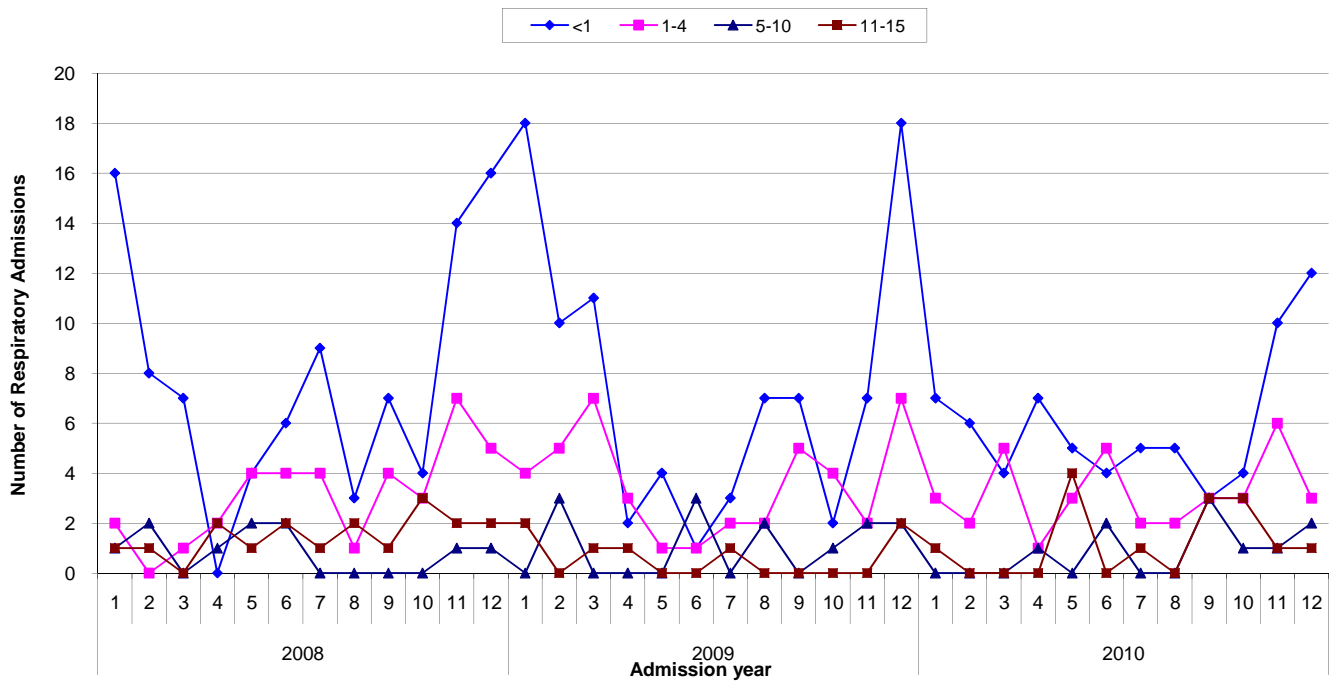


Table 9 Admissions by month by NHS trust, 2008 - 2010

Admission year	NHS Trust	Month																								Total	
		January n %	February n %	March n %	April n %	May n %	June n %	July n %	August n %	September n %	October n %	November n %	December n %	n	%												
2008	C	31 (10)	21 (7)	27 (9)	23 (8)	29 (10)	19 (6)	20 (7)	18 (6)	23 (8)	32 (11)	30 (10)	28 (9)	301	(47.3)												
	D	0 (0)	0 (0)	0 (0)	1 (20)	0 (0)	0 (0)	0 (0)	2 (40)	0 (0)	0 (0)	1 (20)	1 (20)	5	(0.8)												
	E1	1 (11)	1 (11)	0 (0)	0 (0)	1 (11)	0 (0)	3 (33)	1 (11)	1 (11)	1 (11)	0 (0)	0 (0)	9	(1.4)												
	E2	2 (29)	0 (0)	0 (0)	0 (0)	0 (0)	1 (14)	1 (14)	0 (0)	1 (14)	1 (14)	1 (14)	0 (0)	7	(1.1)												
	F	0 (0)	1 (7)	3 (21)	0 (0)	0 (0)	1 (7)	3 (21)	1 (7)	1 (7)	0 (0)	0 (0)	4 (29)	14	(2.2)												
	H	0 (0)	0 (0)	0 (0)	0 (0)	0 (0)	0 (0)	0 (0)	0 (0)	0 (0)	0 (0)	0 (0)	1 (100)	1	(0.2)												
	K	0 (0)	0 (0)	0 (0)	0 (0)	0 (0)	0 (0)	0 (0)	1 (50)	0 (0)	0 (0)	1 (50)	0 (0)	2	(0.3)												
	L	2 (13)	1 (7)	2 (13)	0 (0)	2 (13)	0 (0)	0 (0)	1 (7)	3 (20)	1 (7)	1 (7)	2 (13)	15	(2.4)												
	N	0 (0)	0 (0)	0 (0)	0 (0)	0 (0)	0 (0)	0 (0)	1 (50)	0 (0)	1 (50)	0 (0)	0 (0)	2	(0.3)												
	P	8 (6)	11 (8)	6 (5)	11 (8)	12 (9)	15 (11)	12 (9)	9 (7)	14 (11)	14 (11)	12 (9)	9 (7)	133	(20.9)												
	R	1 (100)	0 (0)	0 (0)	0 (0)	0 (0)	0 (0)	0 (0)	0 (0)	0 (0)	0 (0)	0 (0)	0 (0)	1	(0.2)												
	U	0 (0)	0 (0)	0 (0)	0 (0)	0 (0)	0 (0)	0 (0)	0 (0)	0 (0)	0 (0)	0 (0)	1 (100)	1	(0.2)												
	V	1 (4)	3 (11)	3 (11)	3 (11)	0 (0)	4 (15)	2 (7)	3 (11)	0 (0)	1 (4)	4 (15)	3 (11)	27	(4.2)												
	W	13 (11)	11 (9)	10 (9)	9 (8)	10 (9)	13 (11)	8 (7)	10 (9)	9 (8)	8 (7)	9 (8)	6 (5)	116	(18.2)												
X	0 (0)	0 (0)	0 (0)	0 (0)	0 (0)	0 (0)	0 (0)	0 (0)	0 (0)	0 (0)	2 (100)	0 (0)	2	(0.3)													
ZA	1 (100)	0 (0)	0 (0)	0 (0)	0 (0)	0 (0)	0 (0)	0 (0)	0 (0)	0 (0)	0 (0)	0 (0)	1	(0.2)													
2008 Total		60 (9.4)	49 (7.7)	51 (8.0)	47 (7.4)	54 (8.5)	53 (8.3)	50 (7.8)	46 (7.2)	52 (8.2)	60 (9.4)	60 (9.4)	55 (8.6)	637													
2009	C	29 (9)	31 (9)	33 (10)	24 (7)	16 (5)	22 (7)	25 (8)	27 (8)	24 (7)	20 (6)	34 (10)	45 (14)	330	(50.2)												
	D	1 (25)	1 (25)	0 (0)	1 (25)	1 (25)	0 (0)	0 (0)	0 (0)	0 (0)	0 (0)	0 (0)	0 (0)	4	(0.6)												
	E1	0 (0)	0 (0)	1 (50)	0 (0)	0 (0)	0 (0)	1 (50)	0 (0)	0 (0)	0 (0)	0 (0)	0 (0)	2	(0.3)												
	F	1 (13)	1 (13)	2 (25)	3 (38)	1 (13)	0 (0)	0 (0)	0 (0)	0 (0)	0 (0)	0 (0)	0 (0)	8	(1.2)												
	H	0 (0)	0 (0)	0 (0)	0 (0)	0 (0)	1 (100)	0 (0)	0 (0)	0 (0)	0 (0)	0 (0)	0 (0)	1	(0.2)												
	I	1 (100)	0 (0)	0 (0)	0 (0)	0 (0)	0 (0)	0 (0)	0 (0)	0 (0)	0 (0)	0 (0)	0 (0)	1	(0.2)												
	L	1 (33)	1 (33)	0 (0)	0 (0)	1 (33)	0 (0)	0 (0)	0 (0)	0 (0)	0 (0)	0 (0)	0 (0)	3	(0.5)												
	N	0 (0)	0 (0)	0 (0)	0 (0)	0 (0)	0 (0)	0 (0)	0 (0)	0 (0)	1 (100)	0 (0)	0 (0)	1	(0.2)												
	O	0 (0)	0 (0)	0 (0)	0 (0)	0 (0)	0 (0)	0 (0)	0 (0)	0 (0)	1 (100)	0 (0)	0 (0)	1	(0.2)												
	P	8 (6)	9 (6)	17 (12)	13 (9)	8 (6)	11 (8)	12 (8)	15 (10)	10 (7)	9 (6)	15 (10)	17 (12)	144	(21.9)												
	Q	0 (0)	0 (0)	0 (0)	0 (0)	0 (0)	1 (100)	0 (0)	0 (0)	0 (0)	0 (0)	0 (0)	0 (0)	1	(0.2)												
	R	0 (0)	1 (50)	0 (0)	0 (0)	0 (0)	0 (0)	0 (0)	1 (50)	0 (0)	0 (0)	0 (0)	0 (0)	2	(0.3)												
	V	0 (0)	3 (13)	3 (13)	3 (13)	3 (13)	1 (4)	1 (4)	2 (8)	3 (13)	1 (4)	1 (4)	3 (13)	24	(3.7)												
	W	10 (8)	13 (10)	13 (10)	9 (7)	9 (7)	10 (8)	11 (8)	12 (9)	10 (8)	13 (10)	11 (8)	9 (7)	130	(19.8)												
X	2 (50)	2 (50)	0 (0)	0 (0)	0 (0)	0 (0)	0 (0)	0 (0)	0 (0)	0 (0)	0 (0)	0 (0)	4	(0.6)													
ZA	0 (0)	0 (0)	0 (0)	0 (0)	0 (0)	0 (0)	0 (0)	0 (0)	0 (0)	0 (0)	1 (100)	0 (0)	1	(0.2)													
2009 Total		53 (8.1)	62 (9.4)	69 (10.5)	53 (8.1)	39 (5.9)	46 (7.0)	50 (7.6)	57 (8.7)	47 (7.2)	45 (6.8)	62 (9.4)	74 (11.3)	657													
2010	B	0 (0)	0 (0)	1 (100)	0 (0)	0 (0)	0 (0)	0 (0)	0 (0)	0 (0)	0 (0)	0 (0)	0 (0)	1	(0.2)												
	C	27 (11)	17 (7)	26 (10)	22 (9)	20 (8)	20 (8)	20 (8)	11 (4)	18 (7)	9 (4)	24 (10)	35 (14)	249	(41.9)												
	D	0 (0)	0 (0)	1 (20)	0 (0)	0 (0)	1 (20)	0 (0)	0 (0)	0 (0)	2 (40)	1 (20)	0 (0)	5	(0.8)												
	E1	0 (0)	0 (0)	0 (0)	0 (0)	0 (0)	0 (0)	0 (0)	3 (30)	1 (10)	3 (30)	3 (30)	0 (0)	10	(1.7)												
	E2	1 (17)	1 (17)	2 (33)	0 (0)	0 (0)	0 (0)	0 (0)	1 (17)	1 (17)	0 (0)	0 (0)	0 (0)	6	(1.0)												
	F	0 (0)	2 (40)	0 (0)	0 (0)	0 (0)	0 (0)	1 (20)	2 (40)	0 (0)	0 (0)	0 (0)	0 (0)	5	(0.8)												
	I	0 (0)	0 (0)	0 (0)	0 (0)	0 (0)	0 (0)	0 (0)	0 (0)	0 (0)	0 (0)	0 (0)	1 (100)	1	(0.2)												
	K	0 (0)	0 (0)	0 (0)	0 (0)	0 (0)	0 (0)	0 (0)	0 (0)	0 (0)	2 (67)	1 (33)	0 (0)	3	(0.5)												
	L	0 (0)	0 (0)	0 (0)	0 (0)	1 (33)	0 (0)	0 (0)	0 (0)	0 (0)	1 (33)	0 (0)	1 (33)	3	(0.5)												
	M	0 (0)	0 (0)	1 (100)	0 (0)	0 (0)	0 (0)	0 (0)	0 (0)	0 (0)	0 (0)	0 (0)	0 (0)	1	(0.2)												
	O	0 (0)	0 (0)	0 (0)	0 (0)	0 (0)	0 (0)	0 (0)	1 (100)	0 (0)	0 (0)	0 (0)	0 (0)	1	(0.2)												
	P	17 (12)	8 (6)	4 (3)	16 (11)	14 (10)	11 (8)	19 (13)	15 (10)	10 (7)	15 (10)	9 (6)	7 (5)	145	(24.4)												
	R	0 (0)	1 (100)	0 (0)	0 (0)	0 (0)	0 (0)	0 (0)	0 (0)	0 (0)	0 (0)	0 (0)	0 (0)	1	(0.2)												
	U	0 (0)	0 (0)	0 (0)	0 (0)	0 (0)	0 (0)	0 (0)	0 (0)	0 (0)	0 (0)	1 (100)	0 (0)	1	(0.2)												
V	2 (9)	1 (5)	5 (23)	1 (5)	1 (5)	2 (9)	1 (5)	0 (0)	2 (9)	3 (14)	1 (5)	3 (14)	22	(3.7)													
W	11 (8)	8 (6)	12 (9)	9 (7)	13 (9)	18 (13)	11 (8)	12 (9)	13 (9)	18 (13)	6 (4)	7 (5)	138	(23.2)													
X	0 (0)	0 (0)	0 (0)	0 (0)	0 (0)	0 (0)	1 (50)	1 (50)	0 (0)	0 (0)	0 (0)	0 (0)	2	(0.3)													
2010 Total		58 (9.8)	38 (6.4)	52 (8.8)	48 (8.1)	49 (8.2)	52 (8.8)	53 (8.9)	46 (7.7)	45 (7.6)	53 (8.9)	46 (7.7)	54 (9.1)	594													
Grand Total		171 (9.1)	149 (7.9)	172 (9.1)	148 (7.8)	142 (7.5)	151 (8.0)	153 (8.1)	149 (7.9)	144 (7.6)	158 (8.4)	168 (8.9)	183 (9.7)	1,888													

Table 10 Admissions by SHA / HB and year, 2008 - 2010

Local Health Board	2008		Year 2009		2010		Total	
	n	%	n	%	n	%	n	%
Monmouthshire	16	(3)	24	(4)	17	(3)	57	(3)
Gwynedd	24	(4)	23	(4)	24	(4)	71	(4)
Pembrokeshire	26	(4)	24	(4)	15	(3)	65	(3)
Ceredigion	10	(2)	6	(1)	10	(2)	26	(1)
Neath Port Talbot	23	(4)	27	(4)	19	(3)	69	(4)
Swansea	36	(6)	35	(5)	30	(5)	101	(5)
Conwy	22	(3)	17	(3)	22	(4)	61	(3)
Cardiff	71	(11)	93	(14)	63	(11)	227	(12)
Rhondda Cynon Taff Teaching	44	(7)	66	(10)	44	(7)	154	(8)
Anglesey	22	(3)	16	(2)	17	(3)	55	(3)
Caerphilly Teaching	39	(6)	42	(6)	52	(9)	133	(7)
Bridgend	26	(4)	34	(5)	41	(7)	101	(5)
Wrexham	35	(5)	39	(6)	29	(5)	103	(5)
Flintshire	31	(5)	31	(5)	43	(7)	105	(6)
Vale of Glamorgan	33	(5)	27	(4)	27	(5)	87	(5)
Carmarthenshire	45	(7)	31	(5)	30	(5)	106	(6)
Merthyr Tydfil	11	(2)	11	(2)	8	(1)	30	(2)
Newport	37	(6)	38	(6)	37	(6)	112	(6)
Denbighshire	16	(3)	19	(3)	17	(3)	52	(3)
Blaenau Gwent	13	(2)	19	(3)	16	(3)	48	(3)
Torfaen	31	(5)	28	(4)	20	(3)	79	(4)
Powys Teaching	26	(4)	7	(1)	13	(2)	46	(2)
Total	637	(34)	657	(35)	594	(31)	1888	(100)

Note that percentages in the body of the table are by column

Figure 10 Map showing LHB boundaries



© Crown Copyright/database right 2011. An Ordnance Survey/ONS supplied service.

Table 11 Admissions by mortality risk group by NHS trust, 2008 - 2010

Admission year	NHS Trust	PIM2r Group										Total	
		<1%		1 - <5%		5 - <15%		15 - <30%		30%+			
		n	%	n	%	n	%	n	%	n	%	n	%
2008	C	79	(26)	137	(46)	72	(24)	8	(3)	5	(2)	301	(47.3)
	D	0	(0)	5	(100)	0	(0)	0	(0)	0	(0)	5	(0.8)
	E1	0	(0)	5	(56)	2	(22)	2	(22)	0	(0)	9	(1.4)
	E2	0	(0)	5	(71)	2	(29)	0	(0)	0	(0)	7	(1.1)
	F	0	(0)	9	(64)	4	(29)	1	(7)	0	(0)	14	(2.2)
	H	0	(0)	1	(100)	0	(0)	0	(0)	0	(0)	1	(0.2)
	K	0	(0)	2	(100)	0	(0)	0	(0)	0	(0)	2	(0.3)
	L	11	(73)	4	(27)	0	(0)	0	(0)	0	(0)	15	(2.4)
	N	0	(0)	2	(100)	0	(0)	0	(0)	0	(0)	2	(0.3)
	P	25	(19)	73	(55)	31	(23)	1	(1)	3	(2)	133	(20.9)
	R	0	(0)	1	(100)	0	(0)	0	(0)	0	(0)	1	(0.2)
	U	0	(0)	1	(100)	0	(0)	0	(0)	0	(0)	1	(0.2)
	V	3	(11)	11	(41)	10	(37)	3	(11)	0	(0)	27	(4.2)
	W	2	(2)	91	(78)	21	(18)	1	(1)	1	(1)	116	(18.2)
X	0	(0)	0	(0)	1	(50)	1	(50)	0	(0)	2	(0.3)	
ZA	0	(0)	1	(100)	0	(0)	0	(0)	0	(0)	1	(0.2)	
2008 Total		120	(18.8)	348	(54.6)	143	(22.4)	17	(2.7)	9	(1.4)	637	
2009	C	81	(25)	153	(46)	75	(23)	11	(3)	10	(3)	330	(50.2)
	D	2	(50)	2	(50)	0	(0)	0	(0)	0	(0)	4	(0.6)
	E1	0	(0)	2	(100)	0	(0)	0	(0)	0	(0)	2	(0.3)
	F	0	(0)	6	(75)	1	(13)	1	(13)	0	(0)	8	(1.2)
	H	0	(0)	0	(0)	1	(100)	0	(0)	0	(0)	1	(0.2)
	I	0	(0)	0	(0)	1	(100)	0	(0)	0	(0)	1	(0.2)
	L	0	(0)	2	(67)	1	(33)	0	(0)	0	(0)	3	(0.5)
	N	0	(0)	1	(100)	0	(0)	0	(0)	0	(0)	1	(0.2)
	O	0	(0)	1	(100)	0	(0)	0	(0)	0	(0)	1	(0.2)
	P	28	(19)	83	(58)	29	(20)	3	(2)	1	(1)	144	(21.9)
	Q	0	(0)	1	(100)	0	(0)	0	(0)	0	(0)	1	(0.2)
	R	0	(0)	1	(50)	1	(50)	0	(0)	0	(0)	2	(0.3)
	V	4	(17)	12	(50)	5	(21)	2	(8)	1	(4)	24	(3.7)
	W	27	(21)	83	(64)	14	(11)	4	(3)	2	(2)	130	(19.8)
X	1	(25)	0	(0)	3	(75)	0	(0)	0	(0)	4	(0.6)	
ZA	0	(0)	0	(0)	0	(0)	1	(100)	0	(0)	1	(0.2)	
2009 Total		143	(21.8)	347	(52.8)	131	(19.9)	22	(3.3)	14	(2.1)	657	
2010	B	1	(100)	0	(0)	0	(0)	0	(0)	0	(0)	1	(0.2)
	C	55	(22)	136	(55)	46	(18)	7	(3)	5	(2)	249	(41.9)
	D	2	(40)	3	(60)	0	(0)	0	(0)	0	(0)	5	(0.8)
	E1	3	(30)	4	(40)	1	(10)	2	(20)	0	(0)	10	(1.7)
	E2	0	(0)	4	(67)	2	(33)	0	(0)	0	(0)	6	(1.0)
	F	1	(20)	2	(40)	2	(40)	0	(0)	0	(0)	5	(0.8)
	I	0	(0)	0	(0)	1	(100)	0	(0)	0	(0)	1	(0.2)
	K	0	(0)	2	(67)	1	(33)	0	(0)	0	(0)	3	(0.5)
	L	2	(67)	0	(0)	1	(33)	0	(0)	0	(0)	3	(0.5)
	M	1	(100)	0	(0)	0	(0)	0	(0)	0	(0)	1	(0.2)
	O	1	(100)	0	(0)	0	(0)	0	(0)	0	(0)	1	(0.2)
	P	21	(14)	88	(61)	26	(18)	7	(5)	3	(2)	145	(24.4)
	R	0	(0)	0	(0)	1	(100)	0	(0)	0	(0)	1	(0.2)
	U	0	(0)	1	(100)	0	(0)	0	(0)	0	(0)	1	(0.2)
V	1	(5)	14	(64)	5	(23)	2	(9)	0	(0)	22	(3.7)	
W	33	(24)	83	(60)	17	(12)	4	(3)	1	(1)	138	(23.2)	
X	0	(0)	1	(50)	1	(50)	0	(0)	0	(0)	2	(0.3)	
2010 Total		121	(20.4)	338	(56.9)	104	(17.5)	22	(3.7)	9	(1.5)	594	
Grand Total		384	(10.3)	1,033	(54.7)	378	(20.0)	61	(3.2)	32	(1.7)	1,888	

Table 12 Admissions by admission type and age, 2008 - 2010

Admission Type	Age Group (Years)								Total	
	<1		1-4		5-10		11-15			
	n	%	n	%	n	%	n	%	n	%
Planned - following surgery	303	(41)	182	(25)	93	(13)	155	(21)	733	(38.8)
Unplanned - following surgery	24	(35)	21	(30)	12	(17)	12	(17)	69	(3.7)
Planned - other	37	(69)	7	(13)	3	(6)	7	(13)	54	(2.9)
Unplanned - other	527	(51)	263	(26)	108	(11)	129	(13)	1,027	(54.4)
Unknown	4	(80)	1	(20)	0	(0)	0	(0)	5	(0.3)
Total	895	(47.4)	474	(25.1)	216	(11.4)	303	(16.0)	1,888	

Figure 12 Admissions by admission type, 2008 - 2010

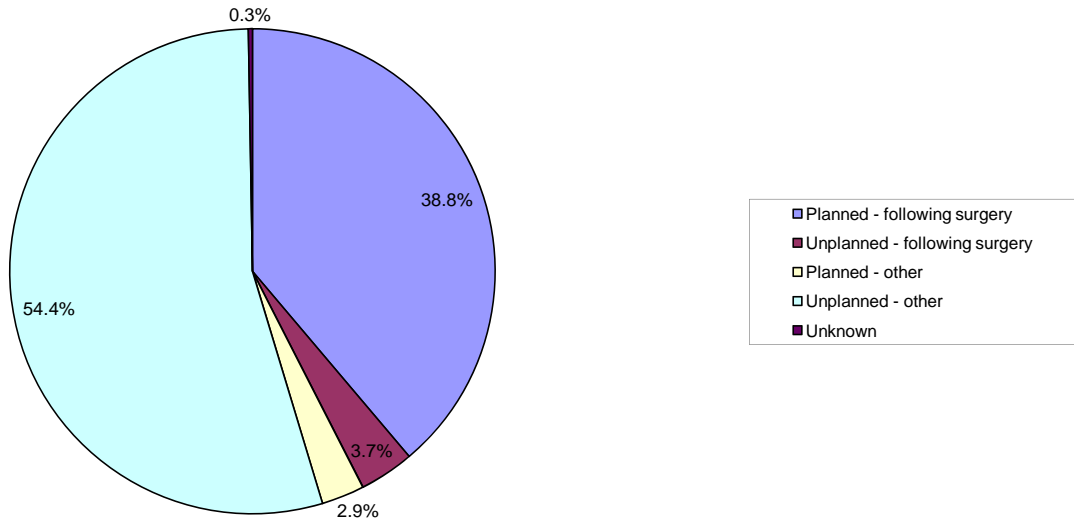


Table 13 Admissions by admission type by NHS trust, 2008 - 2010

Admission year	NHS Trust	Admission Type										Total	
		Planned - following surgery		Unplanned - following surgery		Planned - other		Unplanned - other		Unknown		n	%
		n	%	n	%	n	%	n	%	n	%		
2008	C	78	(26)	13	(4)	4	(1)	206	(68)	0	(0)	301	(47.3)
	D	0	(0)	2	(40)	1	(20)	2	(40)	0	(0)	5	(0.8)
	E1	5	(56)	0	(0)	2	(22)	2	(22)	0	(0)	9	(1.4)
	E2	1	(14)	0	(0)	1	(14)	5	(71)	0	(0)	7	(1.1)
	F	5	(36)	4	(29)	0	(0)	5	(36)	0	(0)	14	(2.2)
	H	1	(100)	0	(0)	0	(0)	0	(0)	0	(0)	1	(0.2)
	K	1	(50)	0	(0)	0	(0)	1	(50)	0	(0)	2	(0.3)
	L	8	(53)	0	(0)	1	(7)	6	(40)	0	(0)	15	(2.4)
	N	1	(50)	0	(0)	1	(50)	0	(0)	0	(0)	2	(0.3)
	P	41	(31)	1	(1)	3	(2)	88	(66)	0	(0)	133	(20.9)
	R	0	(0)	0	(0)	0	(0)	1	(100)	0	(0)	1	(0.2)
	U	0	(0)	0	(0)	0	(0)	1	(100)	0	(0)	1	(0.2)
	V	14	(52)	1	(4)	1	(4)	11	(41)	0	(0)	27	(4.2)
	W	81	(70)	4	(3)	1	(1)	27	(23)	3	(3)	116	(18.2)
X	0	(0)	0	(0)	0	(0)	2	(100)	0	(0)	2	(0.3)	
ZA	0	(0)	0	(0)	0	(0)	1	(100)	0	(0)	1	(0.2)	
2008 Total		236	(37.0)	25	(3.9)	15	(2.4)	358	(56.2)	3	(0.5)	637	
2009	C	80	(24)	13	(4)	6	(2)	231	(70)	0	(0)	330	(50.2)
	D	2	(50)	1	(25)	0	(0)	1	(25)	0	(0)	4	(0.6)
	E1	0	(0)	0	(0)	0	(0)	2	(100)	0	(0)	2	(0.3)
	F	4	(50)	3	(38)	0	(0)	1	(13)	0	(0)	8	(1.2)
	H	0	(0)	0	(0)	1	(100)	0	(0)	0	(0)	1	(0.2)
	I	0	(0)	0	(0)	0	(0)	1	(100)	0	(0)	1	(0.2)
	L	0	(0)	0	(0)	0	(0)	3	(100)	0	(0)	3	(0.5)
	N	1	(100)	0	(0)	0	(0)	0	(0)	0	(0)	1	(0.2)
	O	1	(100)	0	(0)	0	(0)	0	(0)	0	(0)	1	(0.2)
	P	60	(42)	1	(1)	8	(6)	75	(52)	0	(0)	144	(21.9)
	Q	1	(100)	0	(0)	0	(0)	0	(0)	0	(0)	1	(0.2)
	R	0	(0)	0	(0)	0	(0)	2	(100)	0	(0)	2	(0.3)
	V	16	(67)	1	(4)	1	(4)	6	(25)	0	(0)	24	(3.7)
	W	95	(73)	1	(1)	4	(3)	30	(23)	0	(0)	130	(19.8)
X	0	(0)	0	(0)	0	(0)	4	(100)	0	(0)	4	(0.6)	
ZA	0	(0)	0	(0)	0	(0)	1	(100)	0	(0)	1	(0.2)	
2009 Total		260	(39.6)	20	(3.0)	20	(3.0)	357	(54.3)	0	(0.0)	657	
2010	B	0	(0)	0	(0)	0	(0)	1	(100)	0	(0)	1	(0.2)
	C	59	(24)	10	(4)	10	(4)	170	(68)	0	(0)	249	(41.9)
	D	2	(40)	0	(0)	0	(0)	3	(60)	0	(0)	5	(0.8)
	E1	3	(30)	2	(20)	1	(10)	4	(40)	0	(0)	10	(1.7)
	E2	2	(33)	0	(0)	1	(17)	3	(50)	0	(0)	6	(1.0)
	F	2	(40)	2	(40)	1	(20)	0	(0)	0	(0)	5	(0.8)
	I	0	(0)	0	(0)	0	(0)	1	(100)	0	(0)	1	(0.2)
	K	0	(0)	0	(0)	1	(33)	2	(67)	0	(0)	3	(0.5)
	L	1	(33)	0	(0)	0	(0)	2	(67)	0	(0)	3	(0.5)
	M	0	(0)	0	(0)	0	(0)	1	(100)	0	(0)	1	(0.2)
	O	1	(100)	0	(0)	0	(0)	0	(0)	0	(0)	1	(0.2)
	P	54	(37)	7	(5)	3	(2)	81	(56)	0	(0)	145	(24.4)
	R	0	(0)	0	(0)	0	(0)	1	(100)	0	(0)	1	(0.2)
	U	0	(0)	0	(0)	1	(100)	0	(0)	0	(0)	1	(0.2)
V	12	(55)	1	(5)	1	(5)	8	(36)	0	(0)	22	(3.7)	
W	101	(73)	2	(1)	0	(0)	33	(24)	2	(1)	138	(23.2)	
X	0	(0)	0	(0)	0	(0)	2	(100)	0	(0)	2	(0.3)	
2010 Total		237	(39.9)	24	(4.0)	19	(3.2)	312	(52.5)	2	(0.3)	594	
Grand Total		733	(38.8)	69	(3.7)	54	(2.9)	1,027	(54.4)	5	(0.3)	1,888	

Table 14 Admissions by source of admission (admission type 'unplanned - other') by NHS trust, 2008 - 2010

Admission year	NHS Trust	Admission Source										Total	
		Same hospital		Other hospital		Clinic		Home		Unknown		n	%
		n	%	n	%	n	%	n	%	n	%		
2008	C	81	(39)	125	(61)	0	(0)	0	(0)	0	(0)	206	(57.5)
	D	0	(0)	2	(100)	0	(0)	0	(0)	0	(0)	2	(0.6)
	E1	1	(50)	1	(50)	0	(0)	0	(0)	0	(0)	2	(0.6)
	E2	1	(20)	3	(60)	0	(0)	1	(20)	0	(0)	5	(1.4)
	F	3	(60)	2	(40)	0	(0)	0	(0)	0	(0)	5	(1.4)
	K	1	(100)	0	(0)	0	(0)	0	(0)	0	(0)	1	(0.3)
	L	0	(0)	5	(83)	0	(0)	1	(17)	0	(0)	6	(1.7)
	P	27	(31)	61	(69)	0	(0)	0	(0)	0	(0)	88	(24.6)
	R	0	(0)	1	(100)	0	(0)	0	(0)	0	(0)	1	(0.3)
	U	0	(0)	1	(100)	0	(0)	0	(0)	0	(0)	1	(0.3)
	V	5	(45)	6	(55)	0	(0)	0	(0)	0	(0)	11	(3.1)
	W	11	(41)	16	(59)	0	(0)	0	(0)	0	(0)	27	(7.5)
	X	0	(0)	2	(100)	0	(0)	0	(0)	0	(0)	2	(0.6)
ZA	1	(100)	0	(0)	0	(0)	0	(0)	0	(0)	1	(0.3)	
2008 Total		131	(36.6)	225	(62.8)	0	(0.0)	2	(0.6)	0	(0.0)	358	
2009	C	95	(41)	136	(59)	0	(0)	0	(0)	0	(0)	231	(64.7)
	D	1	(100)	0	(0)	0	(0)	0	(0)	0	(0)	1	(0.3)
	E1	1	(50)	1	(50)	0	(0)	0	(0)	0	(0)	2	(0.6)
	F	0	(0)	1	(100)	0	(0)	0	(0)	0	(0)	1	(0.3)
	I	0	(0)	1	(100)	0	(0)	0	(0)	0	(0)	1	(0.3)
	L	0	(0)	3	(100)	0	(0)	0	(0)	0	(0)	3	(0.8)
	P	29	(39)	46	(61)	0	(0)	0	(0)	0	(0)	75	(21.0)
	R	0	(0)	2	(100)	0	(0)	0	(0)	0	(0)	2	(0.6)
	V	5	(83)	1	(17)	0	(0)	0	(0)	0	(0)	6	(1.7)
	W	14	(47)	16	(53)	0	(0)	0	(0)	0	(0)	30	(8.4)
	X	0	(0)	4	(100)	0	(0)	0	(0)	0	(0)	4	(1.1)
	ZA	0	(0)	1	(100)	0	(0)	0	(0)	0	(0)	1	(0.3)
	2009 Total		145	(40.6)	212	(59.4)	0	(0.0)	0	(0.0)	0	(0.0)	357
2010	B	1	(100)	0	(0)	0	(0)	0	(0)	0	(0)	1	(0.3)
	C	64	(38)	106	(62)	0	(0)	0	(0)	0	(0)	170	(54.5)
	D	1	(33)	2	(67)	0	(0)	0	(0)	0	(0)	3	(1.0)
	E1	4	(100)	0	(0)	0	(0)	0	(0)	0	(0)	4	(1.3)
	E2	1	(33)	2	(67)	0	(0)	0	(0)	0	(0)	3	(1.0)
	I	1	(100)	0	(0)	0	(0)	0	(0)	0	(0)	1	(0.3)
	K	2	(100)	0	(0)	0	(0)	0	(0)	0	(0)	2	(0.6)
	L	0	(0)	2	(100)	0	(0)	0	(0)	0	(0)	2	(0.6)
	M	1	(100)	0	(0)	0	(0)	0	(0)	0	(0)	1	(0.3)
	P	24	(30)	57	(70)	0	(0)	0	(0)	0	(0)	81	(26.0)
	R	0	(0)	1	(100)	0	(0)	0	(0)	0	(0)	1	(0.3)
	V	4	(50)	4	(50)	0	(0)	0	(0)	0	(0)	8	(2.6)
	W	23	(70)	10	(30)	0	(0)	0	(0)	0	(0)	33	(10.6)
X	0	(0)	2	(100)	0	(0)	0	(0)	0	(0)	2	(0.6)	
2010 Total		126	(40.4)	186	(59.6)	0	(0.0)	0	(0.0)	0	(0.0)	312	
Grand Total		402	(39.1)	623	(60.7)	0	(0.0)	2	(0.2)	0	(0.0)	1,027	

Table 15 Admissions by care area admitted from (admission type 'unplanned - other'; admitted from hospital) by NHS trust, 2008 - 2010

Admission year	NHS Trust	Accident & emergency		HDU (step-up/step-down unit)		ICU / PICU / NICU		Other intermediate care area (not ICU / PICU / NICU)		Care Area		Recovery only		Theatre and recovery		Ward		X-ray, endoscopy, CT scanner or similar		Unknown		Total			
		n	%	n	%	n	%	n	%	n	%	n	%	n	%	n	%	n	%	n	%	n	%		
2008	C	73	(35)	57	(28)	29	(14)	4		(2)	4	(2)	14	(7)	23	(11)	1		(0)	1	(0)		206	(57.9)	
	D	1	(50)	1	(50)	0	(0)	0		(0)	0	(0)	0	(0)	0	(0)	0		(0)	0	(0)		2	(0.6)	
	E1	0	(0)	0	(0)	2	(100)	0		(0)	0	(0)	0	(0)	0	(0)	0		(0)	0	(0)		2	(0.6)	
	E2	0	(0)	0	(0)	4	(100)	0		(0)	0	(0)	0	(0)	0	(0)	0		(0)	0	(0)		4	(1.1)	
	F	0	(0)	0	(0)	2	(40)	0		(0)	0	(0)	1	(20)	2	(40)	0		(0)	0	(0)		5	(1.4)	
	K	0	(0)	0	(0)	0	(0)	0		(0)	0	(0)	1	(100)	0	(0)	0		(0)	0	(0)		1	(0.3)	
	L	0	(0)	1	(20)	0	(0)	0		(0)	0	(0)	0	(0)	4	(80)	0		(0)	0	(0)		5	(1.4)	
	P	14	(16)	11	(13)	18	(20)	2		(2)	0	(0)	3	(3)	38	(43)	2		(2)	0	(0)		88	(24.7)	
	R	0	(0)	0	(0)	0	(0)	0		(0)	0	(0)	0	(0)	1	(100)	0		(0)	0	(0)		1	(0.3)	
	U	0	(0)	0	(0)	1	(100)	0		(0)	0	(0)	0	(0)	0	(0)	0		(0)	0	(0)		1	(0.3)	
	V	1	(9)	0	(0)	4	(36)	0		(0)	0	(0)	1	(9)	5	(45)	0		(0)	0	(0)		11	(3.1)	
	W	1	(4)	4	(15)	9	(33)	1		(4)	0	(0)	1	(4)	10	(37)	0		(0)	1	(4)		27	(7.6)	
	X	0	(0)	0	(0)	2	(100)	0		(0)	0	(0)	0	(0)	0	(0)	0		(0)	0	(0)		2	(0.6)	
	ZA	1	(100)	0	(0)	0	(0)	0		(0)	0	(0)	0	(0)	0	(0)	0		(0)	0	(0)		1	(0.3)	
2008 Total		91	(25.6)	74	(20.8)	71	(19.9)	7		(2.0)	4	(1.1)	21	(5.9)	83	(23.3)	3		(0.8)	2	(0.6)		356		
2009	C	73	(32)	60	(26)	44	(19)	3		(1)	4	(2)	25	(11)	16	(7)	6		(3)	0	(0)		231	(64.7)	
	D	0	(0)	0	(0)	0	(0)	0		(0)	0	(0)	1	(100)	0	(0)	0		(0)	0	(0)		1	(0.3)	
	E1	1	(50)	0	(0)	0	(0)	0		(0)	0	(0)	0	(0)	1	(50)	0		(0)	0	(0)		2	(0.6)	
	F	0	(0)	1	(100)	0	(0)	0		(0)	0	(0)	0	(0)	0	(0)	0		(0)	0	(0)		1	(0.3)	
	I	0	(0)	0	(0)	1	(100)	0		(0)	0	(0)	0	(0)	0	(0)	0		(0)	0	(0)		1	(0.3)	
	L	1	(33)	0	(0)	1	(33)	0		(0)	0	(0)	1	(33)	0	(0)	0		(0)	0	(0)		3	(0.8)	
	P	11	(15)	11	(15)	17	(23)	0		(0)	0	(0)	4	(5)	31	(41)	1		(1)	0	(0)		75	(21.0)	
	R	1	(50)	0	(0)	1	(50)	0		(0)	0	(0)	0	(0)	0	(0)	0		(0)	0	(0)		2	(0.6)	
	V	0	(0)	0	(0)	1	(17)	0		(0)	0	(0)	2	(33)	3	(50)	0		(0)	0	(0)		6	(1.7)	
	W	1	(3)	1	(3)	15	(50)	1		(3)	1	(3)	4	(13)	4	(13)	0		(0)	3	(10)		30	(8.4)	
	X	0	(0)	0	(0)	3	(75)	1		(25)	0	(0)	0	(0)	0	(0)	0		(0)	0	(0)		4	(1.1)	
	ZA	0	(0)	0	(0)	1	(100)	0		(0)	0	(0)	0	(0)	0	(0)	0		(0)	0	(0)		1	(0.3)	
	2009 Total		88	(24.6)	73	(20.4)	84	(23.5)	5		(1.4)	5	(1.4)	37	(10.4)	55	(15.4)	7		(2.0)	3	(0.8)		357	
	2010	B	1	(100)	0	(0)	0	(0)	0		(0)	0	(0)	0	(0)	0	(0)	0		(0)	0	(0)		1	(0.3)
C		39	(23)	46	(27)	37	(22)	2		(1)	3	(2)	29	(17)	11	(6)	3		(2)	0	(0)		170	(54.5)	
D		1	(33)	0	(0)	0	(0)	0		(0)	0	(0)	0	(0)	2	(67)	0		(0)	0	(0)		3	(1.0)	
E1		0	(0)	0	(0)	1	(25)	0		(0)	0	(0)	0	(0)	3	(75)	0		(0)	0	(0)		4	(1.3)	
E2		0	(0)	1	(33)	1	(33)	1		(33)	0	(0)	0	(0)	0	(0)	0		(0)	0	(0)		3	(1.0)	
I		0	(0)	0	(0)	0	(0)	0		(0)	0	(0)	0	(0)	1	(100)	0		(0)	0	(0)		1	(0.3)	
K		0	(0)	2	(100)	0	(0)	0		(0)	0	(0)	0	(0)	0	(0)	0		(0)	0	(0)		2	(0.6)	
L		2	(100)	0	(0)	0	(0)	0		(0)	0	(0)	0	(0)	0	(0)	0		(0)	0	(0)		2	(0.6)	
M		1	(100)	0	(0)	0	(0)	0		(0)	0	(0)	0	(0)	0	(0)	0		(0)	0	(0)		1	(0.3)	
P		14	(17)	14	(17)	15	(19)	1		(1)	0	(0)	2	(2)	35	(43)	0		(0)	0	(0)		81	(26.0)	
R		1	(100)	0	(0)	0	(0)	0		(0)	0	(0)	0	(0)	0	(0)	0		(0)	0	(0)		1	(0.3)	
V		1	(13)	0	(0)	2	(25)	0		(0)	0	(0)	3	(38)	2	(25)	0		(0)	0	(0)		8	(2.6)	
W		2	(6)	0	(0)	9	(27)	1		(3)	0	(0)	5	(15)	13	(39)	0		(0)	3	(9)		33	(10.6)	
X		0	(0)	0	(0)	2	(100)	0		(0)	0	(0)	0	(0)	0	(0)	0		(0)	0	(0)		2	(0.6)	
2010 Total		62	(19.9)	63	(20.2)	67	(21.5)	5		(1.6)	3	(1.0)	39	(12.5)	67	(21.5)	3		(1.0)	3	(1.0)		312		
Grand Total		241	(23.5)	210	(20.5)	222	(21.7)	17		(1.7)	12	(1.2)	97	(9.5)	205	(20.0)	13		(1.3)	8	(0.8)		1,025		

Table 16 Admissions by primary diagnostic group and age, 2008 - 2010

Diagnostic Group	Age Group (Years)								Total	
	<1		1-4		5-10		11-15			
	n	%	n	%	n	%	n	%	n	%
Blood / lymphatic	1	(11)	6	(67)	1	(11)	1	(11)	9	(0.5)
Body wall and cavities	29	(88)	4	(12)	0	(0)	0	(0)	33	(1.7)
Cardiovascular	378	(61)	137	(22)	64	(10)	44	(7)	623	(33.0)
Endocrine / metabolic	11	(37)	7	(23)	5	(17)	7	(23)	30	(1.6)
Gastrointestinal	49	(68)	14	(19)	5	(7)	4	(6)	72	(3.8)
Infection	74	(51)	41	(28)	14	(10)	16	(11)	145	(7.7)
Multisystem	5	(63)	2	(25)	0	(0)	1	(13)	8	(0.4)
Musculoskeletal	2	(1)	10	(6)	23	(15)	119	(77)	154	(8.2)
Neurological	55	(27)	84	(41)	33	(16)	31	(15)	203	(10.8)
Oncology	4	(14)	7	(24)	12	(41)	6	(21)	29	(1.5)
Respiratory	256	(57)	118	(26)	33	(7)	39	(9)	446	(23.6)
Trauma	5	(8)	21	(32)	13	(20)	26	(40)	65	(3.4)
Other	26	(37)	23	(33)	13	(19)	8	(11)	70	(3.7)
Unknown	0	(0)	0	(0)	0	(0)	1	(100)	1	-
Total	895	(47.4)	474	(25.1)	216	(11.4)	303	(16.0)	1,888	

Figure 16 Admissions by primary diagnostic group, 2008 - 2010

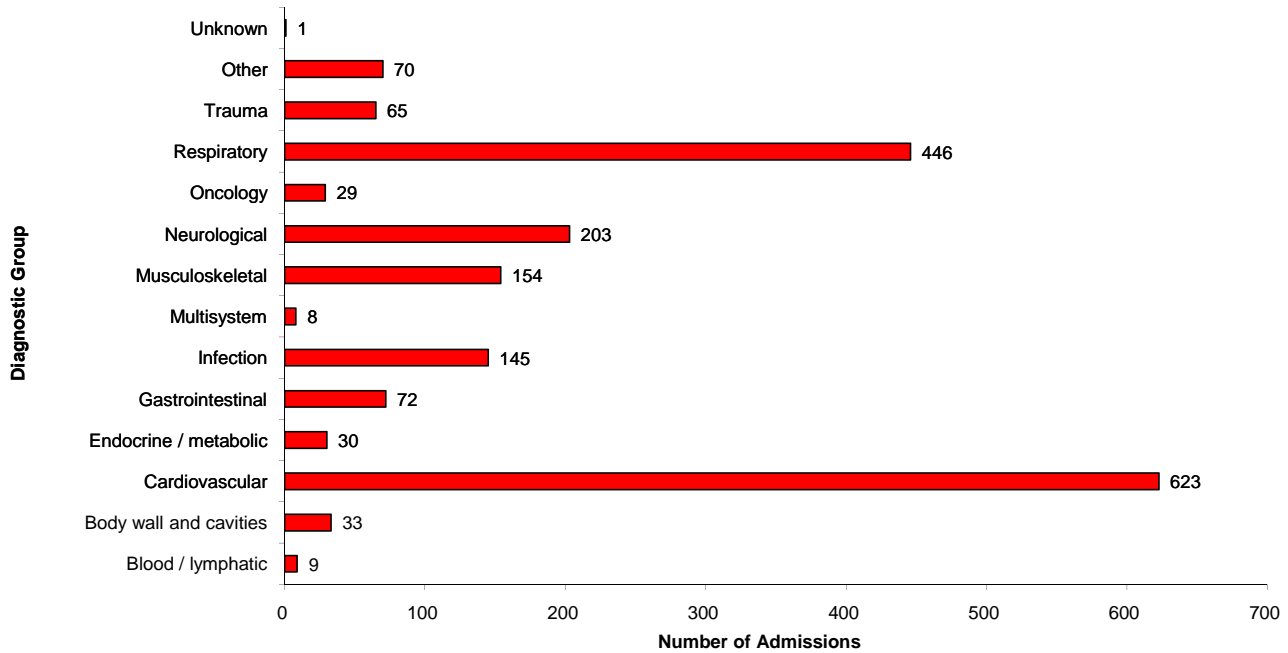


Table 17 Admissions by primary diagnostic group and age (16+), 2008 - 2010

Diagnostic Group	Age Group (Years)								Total	
	16		17-20		21-25		26+			
	n	%	n	%	n	%	n	%	n	%
Cardiovascular	3	(60)	1	(20)	1	(20)	0	(0)	5	(13.2)
Gastrointestinal	2	(67)	1	(33)	0	(0)	0	(0)	3	(7.9)
Infection	0	(0)	1	(100)	0	(0)	0	(0)	1	(2.6)
Musculoskeletal	6	(67)	2	(22)	1	(11)	0	(0)	9	(23.7)
Neurological	4	(67)	2	(33)	0	(0)	0	(0)	6	(15.8)
Oncology	2	(50)	2	(50)	0	(0)	0	(0)	4	(10.5)
Respiratory	3	(33)	6	(67)	0	(0)	0	(0)	9	(23.7)
Trauma	1	(100)	0	(0)	0	(0)	0	(0)	1	(2.6)
Total	21	(55.3)	15	(39.5)	2	(5.3)	0	(0.0)	38	

Figure 17 Admissions by primary diagnostic group, 2008 - 2010

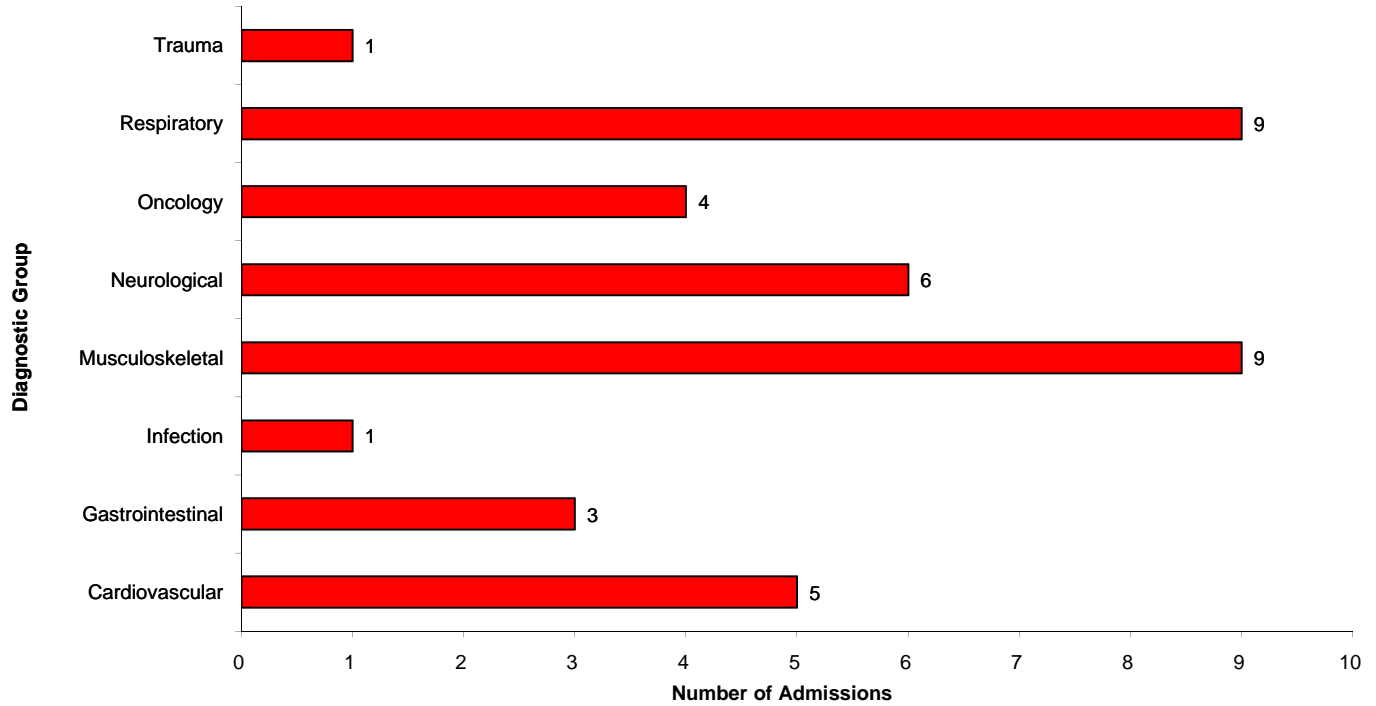


Table 19 Admissions by primary diagnostic group (planned - following surgery) by NHS trust, 2008 - 2010

Admission year	NHS Trust	Blood / lymphatic		Body wall and cavities		Cardiovascular		Endocrine / metabolic		Gastrointestinal		Infection		Multisystem		Musculoskeletal		Neurological		Oncology		Respiratory		Trauma		Other		Unknown		Total			
		n	%	n	%	n	%	n	%	n	%	n	%	n	%	n	%	n	%	n	%	n	%	n	%	n	%	n	%	n	%		
2008	C	0	(0)	1	(1)	0	(0)	1	(1)	1	(1)	1	(1)	1	(1)	45	(58)	1	(1)	3	(4)	18	(23)	0	(0)	6	(8)	0	(0)	78	(33.1)		
	E1	0	(0)	0	(0)	0	(0)	0	(0)	0	(0)	0	(0)	0	(0)	0	(0)	1	(20)	1	(20)	3	(60)	0	(0)	0	(0)	0	(0)	5	(2.1)		
	E2	0	(0)	0	(0)	0	(0)	0	(0)	0	(0)	0	(0)	0	(0)	0	(0)	0	(0)	0	(0)	1	(100)	0	(0)	0	(0)	0	(0)	1	(0.4)		
	F	0	(0)	0	(0)	4	(80)	0	(0)	0	(0)	0	(0)	0	(0)	0	(0)	0	(0)	0	(0)	0	(0)	0	(0)	1	(20)	0	(0)	5	(2.1)		
	H	0	(0)	0	(0)	0	(0)	0	(0)	0	(0)	1	(100)	0	(0)	0	(0)	0	(0)	0	(0)	0	(0)	0	(0)	0	(0)	0	(0)	0	(0)	1	(0.4)
	K	0	(0)	0	(0)	1	(100)	0	(0)	0	(0)	0	(0)	0	(0)	0	(0)	0	(0)	0	(0)	0	(0)	0	(0)	0	(0)	0	(0)	0	(0)	1	(0.4)
	L	0	(0)	0	(0)	0	(0)	0	(0)	0	(0)	0	(0)	0	(0)	0	(0)	8	(100)	0	(0)	0	(0)	0	(0)	0	(0)	0	(0)	0	(0)	8	(3.4)
	N	0	(0)	0	(0)	0	(0)	0	(0)	0	(0)	0	(0)	0	(0)	1	(100)	0	(0)	0	(0)	0	(0)	0	(0)	0	(0)	0	(0)	0	(0)	1	(0.4)
	P	0	(0)	1	(2)	22	(54)	0	(0)	4	(10)	0	(0)	0	(0)	0	(0)	0	(0)	2	(5)	5	(12)	6	(15)	0	(0)	1	(2)	0	(0)	41	(17.4)
	V	0	(0)	0	(0)	10	(71)	0	(0)	2	(14)	0	(0)	0	(0)	0	(0)	0	(0)	0	(0)	0	(0)	0	(0)	0	(0)	2	(14)	0	(0)	14	(5.9)
	W	0	(0)	0	(0)	79	(98)	0	(0)	0	(0)	0	(0)	0	(0)	1	(1)	0	(0)	0	(0)	0	(0)	0	(0)	0	(0)	1	(1)	0	(0)	81	(34.3)
2008 Total		0	(0.0)	2	(0.8)	116	(49.2)	1	(0.4)	8	(3.4)	1	(0.4)	1	(0.4)	55	(23.3)	4	(1.7)	9	(3.8)	28	(11.9)	0	(0.0)	11	(4.7)	0	(0.0)	236			
2009	C	0	(0)	2	(3)	0	(0)	0	(0)	3	(4)	1	(1)	0	(0)	52	(65)	2	(3)	2	(3)	14	(18)	1	(1)	3	(4)	0	(0)	80	(30.8)		
	D	0	(0)	0	(0)	0	(0)	1	(50)	0	(0)	0	(0)	0	(0)	0	(0)	0	(0)	1	(50)	0	(0)	0	(0)	0	(0)	0	(0)	0	(0)	2	(0.8)
	F	0	(0)	0	(0)	4	(100)	0	(0)	0	(0)	0	(0)	0	(0)	0	(0)	0	(0)	0	(0)	0	(0)	0	(0)	0	(0)	0	(0)	0	(0)	4	(1.5)
	N	0	(0)	1	(100)	0	(0)	0	(0)	0	(0)	0	(0)	0	(0)	0	(0)	0	(0)	0	(0)	0	(0)	0	(0)	0	(0)	0	(0)	0	(0)	1	(0.4)
	O	0	(0)	0	(0)	1	(100)	0	(0)	0	(0)	0	(0)	0	(0)	0	(0)	0	(0)	0	(0)	0	(0)	0	(0)	0	(0)	0	(0)	0	(0)	1	(0.4)
	P	1	(2)	2	(3)	35	(58)	0	(0)	6	(10)	0	(0)	0	(0)	4	(7)	5	(8)	2	(3)	5	(8)	0	(0)	0	(0)	0	(0)	0	(0)	60	(23.1)
	Q	0	(0)	1	(100)	0	(0)	0	(0)	0	(0)	0	(0)	0	(0)	0	(0)	0	(0)	0	(0)	0	(0)	0	(0)	0	(0)	0	(0)	0	(0)	1	(0.4)
	V	0	(0)	1	(6)	14	(88)	0	(0)	1	(6)	0	(0)	0	(0)	0	(0)	0	(0)	0	(0)	0	(0)	0	(0)	0	(0)	0	(0)	0	(0)	16	(6.2)
	W	0	(0)	0	(0)	94	(99)	0	(0)	0	(0)	0	(0)	0	(0)	0	(0)	0	(0)	0	(0)	0	(0)	0	(0)	0	(0)	1	(1)	0	(0)	95	(36.5)
	2009 Total		1	(0.4)	7	(2.7)	148	(56.9)	1	(0.4)	10	(3.8)	1	(0.4)	0	(0.0)	56	(21.5)	7	(2.7)	5	(1.9)	19	(7.3)	1	(0.4)	4	(1.5)	0	(0.0)	260		
	2010	C	0	(0)	1	(2)	2	(3)	1	(2)	2	(3)	0	(0)	0	(0)	30	(51)	4	(7)	0	(0)	17	(29)	2	(3)	0	(0)	0	(0)	59	(24.9)	
D		0	(0)	0	(0)	0	(0)	0	(0)	0	(0)	0	(0)	0	(0)	0	(0)	0	(0)	0	(0)	0	(0)	1	(50)	1	(50)	0	(0)	2	(0.8)		
E1		0	(0)	0	(0)	0	(0)	0	(0)	0	(0)	0	(0)	0	(0)	1	(33)	0	(0)	0	(0)	1	(33)	0	(0)	1	(33)	0	(0)	3	(1.3)		
E2		0	(0)	0	(0)	2	(100)	0	(0)	0	(0)	0	(0)	0	(0)	0	(0)	0	(0)	0	(0)	0	(0)	0	(0)	0	(0)	0	(0)	0	(0)	2	(0.8)
F		0	(0)	0	(0)	2	(100)	0	(0)	0	(0)	0	(0)	0	(0)	0	(0)	0	(0)	0	(0)	0	(0)	0	(0)	0	(0)	0	(0)	0	(0)	2	(0.8)
L		0	(0)	0	(0)	0	(0)	0	(0)	0	(0)	0	(0)	0	(0)	1	(100)	0	(0)	0	(0)	0	(0)	0	(0)	0	(0)	0	(0)	0	(0)	1	(0.4)
O		0	(0)	0	(0)	1	(100)	0	(0)	0	(0)	0	(0)	0	(0)	0	(0)	0	(0)	0	(0)	0	(0)	0	(0)	0	(0)	0	(0)	0	(0)	1	(0.4)
P		0	(0)	4	(7)	36	(67)	0	(0)	8	(15)	0	(0)	2	(4)	0	(0)	2	(4)	1	(2)	1	(2)	0	(0)	0	(0)	0	(0)	0	(0)	54	(22.8)
V		0	(0)	0	(0)	12	(100)	0	(0)	0	(0)	0	(0)	0	(0)	0	(0)	0	(0)	0	(0)	0	(0)	0	(0)	0	(0)	0	(0)	0	(0)	12	(5.1)
W		0	(0)	1	(1)	97	(96)	0	(0)	0	(0)	0	(0)	0	(0)	0	(0)	0	(0)	0	(0)	1	(1)	0	(0)	0	(0)	1	(1)	1	(1)	101	(42.6)
2010 Total			0	(0.0)	6	(2.5)	152	(64.1)	1	(0.4)	10	(4.2)	0	(0.0)	2	(0.8)	32	(13.5)	6	(2.5)	1	(0.4)	20	(8.4)	3	(1.3)	3	(1.3)	1	(0.4)	237		
Grand Total		1	(0.1)	15	(2.0)	416	(56.8)	3	(0.4)	28	(3.8)	2	(0.3)	3	(0.4)	143	(19.5)	17	(2.3)	15	(2.0)	67	(9.1)	4	(0.5)	18	(2.5)	1	(0.1)	733			

Table 20 Admissions by primary diagnostic group (unplanned - following surgery) by NHS trust, 2008 - 2010

Admission year	NHS Trust	Blood / lymphatic		Body wall and cavities		Cardiovascular		Endocrine / metabolic		Gastrointestinal		Diagnostic Group		Musculoskeletal		Neurological		Oncology		Respiratory		Trauma		Other		Unknown		Total			
		n	%	n	%	n	%	n	%	n	%	n	%	n	%	n	%	n	%	n	%	n	%	n	%	n	%	n	%		
2008	C	0	(0)	1	(8)	0	(0)	0	(0)	1	(8)	2	(15)	0	(0)	0	(0)	3	(23)	1	(8)	4	(31)	1	(8)	0	(0)	0	(0)	13	(52.0)
	D	0	(0)	0	(0)	1	(50)	0	(0)	0	(0)	0	(0)	0	(0)	0	(0)	0	(0)	0	(0)	0	(0)	0	(0)	1	(50)	0	(0)	2	(8.0)
	F	0	(0)	0	(0)	3	(75)	0	(0)	0	(0)	0	(0)	0	(0)	0	(0)	0	(0)	0	(0)	1	(25)	0	(0)	0	(0)	0	(0)	4	(16.0)
	P	0	(0)	0	(0)	0	(0)	0	(0)	0	(0)	0	(0)	0	(0)	0	(0)	1	(100)	0	(0)	0	(0)	0	(0)	0	(0)	0	(0)	1	(4.0)
	V	0	(0)	0	(0)	0	(0)	0	(0)	0	(0)	1	(100)	0	(0)	0	(0)	0	(0)	0	(0)	0	(0)	0	(0)	0	(0)	0	(0)	1	(4.0)
W	0	(0)	0	(0)	3	(75)	0	(0)	0	(0)	1	(25)	0	(0)	0	(0)	0	(0)	0	(0)	0	(0)	0	(0)	0	(0)	0	(0)	4	(16.0)	
2008 Total		0	(0.0)	1	(4.0)	7	(28.0)	0	(0.0)	3	(12.0)	2	(8.0)	0	(0.0)	0	(0.0)	4	(16.0)	1	(4.0)	5	(20.0)	1	(4.0)	1	(4.0)	0	(0.0)	25	
2009	C	1	(8)	1	(8)	0	(0)	1	(8)	0	(0)	3	(23)	0	(0)	2	(15)	0	(0)	0	(0)	4	(31)	0	(0)	1	(8)	0	(0)	13	(65.0)
	D	0	(0)	0	(0)	0	(0)	0	(0)	0	(0)	0	(0)	0	(0)	0	(0)	0	(0)	0	(0)	1	(100)	0	(0)	0	(0)	0	(0)	1	(5.0)
	F	0	(0)	0	(0)	2	(67)	0	(0)	0	(0)	0	(0)	0	(0)	0	(0)	0	(0)	0	(0)	1	(33)	0	(0)	0	(0)	0	(0)	3	(15.0)
	P	0	(0)	1	(100)	0	(0)	0	(0)	0	(0)	0	(0)	0	(0)	0	(0)	0	(0)	0	(0)	0	(0)	0	(0)	0	(0)	0	(0)	1	(5.0)
	V	0	(0)	0	(0)	0	(0)	0	(0)	0	(0)	1	(100)	0	(0)	0	(0)	0	(0)	0	(0)	0	(0)	0	(0)	0	(0)	0	(0)	1	(5.0)
W	0	(0)	0	(0)	1	(100)	0	(0)	0	(0)	0	(0)	0	(0)	0	(0)	0	(0)	0	(0)	0	(0)	0	(0)	0	(0)	0	(0)	1	(5.0)	
2009 Total		1	(5.0)	2	(10.0)	3	(15.0)	1	(5.0)	1	(5.0)	3	####	0	(0.0)	2	(10.0)	0	(0.0)	0	(0.0)	6	(30.0)	0	(0.0)	1	(5.0)	0	(0.0)	20	
2010	C	0	(0)	0	(0)	0	(0)	0	(0)	1	(10)	0	(0)	0	(0)	1	(10)	2	(20)	0	(0)	4	(40)	1	(10)	1	(10)	0	(0)	10	(41.7)
	E1	0	(0)	0	(0)	0	(0)	0	(0)	0	(0)	1	(50)	0	(0)	0	(0)	0	(0)	0	(0)	0	(0)	0	(0)	1	(50)	0	(0)	2	(8.3)
	F	0	(0)	0	(0)	2	(100)	0	(0)	0	(0)	0	(0)	0	(0)	0	(0)	0	(0)	0	(0)	0	(0)	0	(0)	0	(0)	0	(0)	2	(8.3)
	P	0	(0)	0	(0)	0	(0)	0	(0)	0	(0)	1	(14)	0	(0)	0	(0)	1	(14)	1	(14)	2	(29)	2	(29)	0	(0)	0	(0)	7	(29.2)
	V	0	(0)	0	(0)	1	(100)	0	(0)	0	(0)	0	(0)	0	(0)	0	(0)	0	(0)	0	(0)	0	(0)	0	(0)	0	(0)	0	(0)	1	(4.2)
W	0	(0)	0	(0)	0	(0)	0	(0)	0	(0)	1	(50)	0	(0)	0	(0)	0	(0)	0	(0)	0	(0)	0	(0)	1	(50)	0	(0)	2	(8.3)	
2010 Total		0	(0.0)	0	(0.0)	3	(12.5)	0	(0.0)	4	(16.7)	0	(0.0)	0	(0.0)	2	(8.3)	3	(12.5)	2	(8.3)	6	(25.0)	1	(4.2)	3	(12.5)	0	(0.0)	24	
Grand Total		1	(1.4)	3	(4.3)	13	(18.8)	1	(1.4)	8	(11.6)	5	(7.2)	0	(0.0)	4	(5.8)	7	(10.1)	3	(4.3)	17	(24.6)	2	(2.9)	5	(7.2)	0	(0.0)	69	

Table 21 Admissions by primary diagnostic group (planned - other) by NHS trust, 2008 - 2010

Admission year	NHS Trust	Blood / lymphatic		Body wall and cavities		Cardiovascular		Endocrine / metabolic		Gastrointestinal		Diagnostic Group Infection		Multisystem		Musculoskeletal		Neurological		Oncology		Respiratory		Trauma		Other		Unknown		Total			
		n	%	n	%	n	%	n	%	n	%	n	%	n	%	n	%	n	%	n	%	n	%	n	%	n	%	n	%	n	%		
2008	C	0	(0)	0	(0)	1	(25)	0	(0)	0	(0)	1	(25)	0	(0)	0	(0)	0	(0)	1	(25)	1	(25)	0	(0)	0	(0)	0	(0)	0	(0)	4	(26.7)
	D	0	(0)	0	(0)	0	(0)	0	(0)	0	(0)	0	(0)	0	(0)	0	(0)	0	(0)	0	(0)	1	(100)	0	(0)	0	(0)	0	(0)	0	(0)	1	(6.7)
	E1	0	(0)	0	(0)	1	(50)	0	(0)	0	(0)	1	(50)	0	(0)	0	(0)	0	(0)	0	(0)	0	(0)	0	(0)	0	(0)	0	(0)	0	(0)	2	(13.3)
	E2	0	(0)	0	(0)	0	(0)	0	(0)	0	(0)	0	(0)	0	(0)	0	(0)	0	(0)	0	(0)	1	(100)	0	(0)	0	(0)	0	(0)	0	(0)	1	(6.7)
	L	0	(0)	0	(0)	0	(0)	0	(0)	0	(0)	0	(0)	0	(0)	1	(100)	0	(0)	0	(0)	0	(0)	0	(0)	0	(0)	0	(0)	0	(0)	1	(6.7)
	N	0	(0)	0	(0)	0	(0)	0	(0)	0	(0)	0	(0)	1	(100)	0	(0)	0	(0)	0	(0)	0	(0)	0	(0)	0	(0)	0	(0)	0	(0)	1	(6.7)
	P	0	(0)	0	(0)	3	(100)	0	(0)	0	(0)	0	(0)	0	(0)	0	(0)	0	(0)	0	(0)	0	(0)	0	(0)	0	(0)	0	(0)	0	(0)	3	(20.0)
	V	0	(0)	0	(0)	1	(100)	0	(0)	0	(0)	0	(0)	0	(0)	0	(0)	0	(0)	0	(0)	0	(0)	0	(0)	0	(0)	0	(0)	0	(0)	1	(6.7)
W	0	(0)	0	(0)	1	(100)	0	(0)	0	(0)	0	(0)	0	(0)	0	(0)	0	(0)	0	(0)	0	(0)	0	(0)	0	(0)	0	(0)	0	(0)	1	(6.7)	
2008 Total		0	(0.0)	0	(0.0)	7	(46.7)	0	(0.0)	0	(0.0)	2	(13.3)	1	(6.7)	1	(6.7)	0	(0.0)	1	(6.7)	3	(20.0)	0	(0.0)	0	(0.0)	0	(0.0)	0	(0.0)	15	
2009	C	0	(0)	0	(0)	1	(17)	0	(0)	0	(0)	3	(50)	0	(0)	0	(0)	1	(17)	0	(0)	0	(0)	1	(17)	0	(0)	0	(0)	0	(0)	6	(30.0)
	H	0	(0)	0	(0)	0	(0)	0	(0)	1	(100)	0	(0)	0	(0)	0	(0)	0	(0)	0	(0)	0	(0)	0	(0)	0	(0)	0	(0)	0	(0)	1	(5.0)
	P	0	(0)	1	(13)	5	(63)	0	(0)	0	(0)	0	(0)	0	(0)	0	(0)	0	(0)	0	(0)	2	(25)	0	(0)	0	(0)	0	(0)	0	(0)	8	(40.0)
	V	0	(0)	0	(0)	0	(0)	0	(0)	0	(0)	1	(100)	0	(0)	0	(0)	0	(0)	0	(0)	0	(0)	0	(0)	0	(0)	0	(0)	0	(0)	1	(5.0)
	W	0	(0)	0	(0)	4	(100)	0	(0)	0	(0)	0	(0)	0	(0)	0	(0)	0	(0)	0	(0)	0	(0)	0	(0)	0	(0)	0	(0)	0	(0)	4	(20.0)
2009 Total		0	(0.0)	1	(5.0)	10	(50.0)	0	(0.0)	1	(5.0)	4	(20.0)	0	(0.0)	0	(0.0)	1	(5.0)	0	(0.0)	2	(10.0)	1	(5.0)	0	(0.0)	0	(0.0)	0	(0.0)	20	
2010	C	0	(0)	0	(0)	1	(10)	0	(0)	1	(10)	3	(30)	0	(0)	0	(0)	2	(20)	0	(0)	3	(30)	0	(0)	0	(0)	0	(0)	0	(0)	10	(52.6)
	E1	0	(0)	0	(0)	0	(0)	0	(0)	0	(0)	0	(0)	0	(0)	0	(0)	0	(0)	0	(0)	1	(100)	0	(0)	0	(0)	0	(0)	0	(0)	1	(5.3)
	E2	0	(0)	0	(0)	1	(100)	0	(0)	0	(0)	0	(0)	0	(0)	0	(0)	0	(0)	0	(0)	0	(0)	0	(0)	0	(0)	0	(0)	0	(0)	1	(5.3)
	F	0	(0)	0	(0)	1	(100)	0	(0)	0	(0)	0	(0)	0	(0)	0	(0)	0	(0)	0	(0)	0	(0)	0	(0)	0	(0)	0	(0)	0	(0)	1	(5.3)
	K	0	(0)	0	(0)	1	(100)	0	(0)	0	(0)	0	(0)	0	(0)	0	(0)	0	(0)	0	(0)	0	(0)	0	(0)	0	(0)	0	(0)	0	(0)	1	(5.3)
	P	0	(0)	0	(0)	1	(33)	0	(0)	1	(33)	0	(0)	0	(0)	0	(0)	0	(0)	0	(0)	1	(33)	0	(0)	0	(0)	0	(0)	0	(0)	3	(15.8)
	U	0	(0)	0	(0)	0	(0)	0	(0)	0	(0)	0	(0)	0	(0)	0	(0)	0	(0)	0	(0)	1	(100)	0	(0)	0	(0)	0	(0)	0	(0)	1	(5.3)
	V	0	(0)	0	(0)	1	(100)	0	(0)	0	(0)	0	(0)	0	(0)	0	(0)	0	(0)	0	(0)	0	(0)	0	(0)	0	(0)	0	(0)	0	(0)	1	(5.3)
2010 Total		0	(0.0)	0	(0.0)	6	(31.6)	0	(0.0)	2	(10.5)	3	(15.8)	0	(0.0)	0	(0.0)	2	(10.5)	0	(0.0)	6	(31.6)	0	(0.0)	0	(0.0)	0	(0.0)	0	(0.0)	19	
Grand Total		0	(0.0)	1	(1.9)	23	(42.6)	0	(0.0)	3	(5.6)	9	(16.7)	1	(1.9)	1	(1.9)	3	(5.6)	1	(1.9)	11	(20.4)	1	(1.9)	0	(0.0)	0	(0.0)	0	(0.0)	54	

Table 22 Admissions by primary diagnostic group (unplanned - other) by NHS trust, 2008 - 2010

Admission year	NHS Trust	Blood / lymphatic		Body wall and cavities		Cardiovascular		Endocrine / metabolic		Gastrointestinal		Diagnostic Group Infection		Multisystem		Musculoskeletal		Neurological		Oncology		Respiratory		Trauma		Other		Unknown		Total	
		n	%	n	%	n	%	n	%	n	%	n	%	n	%	n	%	n	%	n	%	n	%	n	%	n	%	n	%	n	%
2008	C	3	(1)	0	(0)	9	(4)	10	(5)	3	(1)	37	(18)	0	(0)	0	(0)	50	(24)	5	(2)	70	(34)	10	(5)	9	(4)	0	(0)	206	(57.5)
	D	0	(0)	0	(0)	0	(0)	0	(0)	0	(0)	0	(0)	0	(0)	0	(0)	1	(50)	0	(0)	0	(0)	1	(50)	0	(0)	0	(0)	2	(0.6)
	E1	0	(0)	2	(100)	0	(0)	0	(0)	0	(0)	0	(0)	0	(0)	0	(0)	0	(0)	0	(0)	0	(0)	0	(0)	0	(0)	0	(0)	2	(0.6)
	E2	0	(0)	1	(20)	1	(20)	0	(0)	0	(0)	0	(0)	0	(0)	0	(0)	0	(0)	0	(0)	3	(60)	0	(0)	0	(0)	0	(0)	5	(1.4)
	F	0	(0)	0	(0)	2	(40)	0	(0)	0	(0)	0	(0)	0	(0)	0	(0)	0	(0)	0	(0)	3	(60)	0	(0)	0	(0)	0	(0)	5	(1.4)
	K	0	(0)	0	(0)	1	(100)	0	(0)	0	(0)	0	(0)	0	(0)	0	(0)	0	(0)	0	(0)	0	(0)	0	(0)	0	(0)	0	(0)	1	(0.3)
	L	0	(0)	0	(0)	0	(0)	0	(0)	0	(0)	0	(0)	0	(0)	0	(0)	0	(0)	0	(0)	6	(100)	0	(0)	0	(0)	0	(0)	6	(1.7)
	P	0	(0)	3	(3)	9	(10)	1	(1)	7	(8)	4	(5)	0	(0)	0	(0)	11	(13)	2	(2)	37	(42)	9	(10)	5	(6)	0	(0)	88	(24.6)
	R	0	(0)	0	(0)	0	(0)	0	(0)	0	(0)	0	(0)	0	(0)	0	(0)	1	(100)	0	(0)	0	(0)	0	(0)	0	(0)	0	(0)	1	(0.3)
	U	0	(0)	0	(0)	0	(0)	0	(0)	0	(0)	0	(0)	0	(0)	0	(0)	0	(0)	0	(0)	1	(100)	0	(0)	0	(0)	0	(0)	1	(0.3)
	V	0	(0)	0	(0)	6	(55)	0	(0)	1	(9)	2	(18)	0	(0)	0	(0)	0	(0)	0	(0)	1	(9)	1	(9)	1	(9)	0	(0)	11	(3.1)
	W	0	(0)	1	(4)	19	(70)	0	(0)	1	(4)	1	(4)	0	(0)	0	(0)	2	(7)	1	(4)	2	(7)	0	(0)	0	(0)	0	(0)	27	(7.5)
	X	0	(0)	0	(0)	1	(50)	0	(0)	0	(0)	1	(50)	0	(0)	0	(0)	0	(0)	0	(0)	0	(0)	0	(0)	0	(0)	0	(0)	2	(0.6)
ZA	0	(0)	0	(0)	0	(0)	1	(100)	0	(0)	0	(0)	0	(0)	0	(0)	0	(0)	0	(0)	0	(0)	0	(0)	0	(0)	0	(0)	2	(0.3)	
2008 Total		3	(0.8)	7	(2.0)	48	(13.4)	12	(3.4)	12	(3.4)	45	(12.6)	0	(0.0)	0	(0.0)	65	(18.2)	8	(2.2)	123	(34.4)	21	(5.9)	14	(3.9)	0	(0.0)	358	
2009	C	1	(0)	1	(0)	12	(5)	5	(2)	6	(3)	39	(17)	0	(0)	4	(2)	46	(20)	2	(1)	89	(39)	13	(6)	13	(6)	0	(0)	231	(64.7)
	D	0	(0)	0	(0)	0	(0)	0	(0)	0	(0)	0	(0)	0	(0)	0	(0)	0	(0)	0	(0)	0	(0)	0	(0)	1	(100)	0	(0)	1	(0.3)
	E1	0	(0)	0	(0)	0	(0)	0	(0)	0	(0)	0	(0)	0	(0)	0	(0)	0	(0)	0	(0)	1	(50)	1	(50)	0	(0)	0	(0)	2	(0.6)
	F	0	(0)	0	(0)	1	(100)	0	(0)	0	(0)	0	(0)	0	(0)	0	(0)	0	(0)	0	(0)	0	(0)	0	(0)	0	(0)	0	(0)	1	(0.3)
	I	0	(0)	0	(0)	1	(100)	0	(0)	0	(0)	0	(0)	0	(0)	0	(0)	0	(0)	0	(0)	0	(0)	0	(0)	0	(0)	0	(0)	1	(0.3)
	L	0	(0)	0	(0)	0	(0)	0	(0)	0	(0)	0	(0)	0	(0)	0	(0)	1	(33)	0	(0)	2	(67)	0	(0)	0	(0)	0	(0)	3	(0.8)
	P	1	(1)	4	(5)	18	(24)	2	(3)	5	(7)	5	(7)	2	(3)	1	(1)	6	(8)	0	(0)	27	(36)	2	(3)	2	(3)	0	(0)	75	(21.0)
	R	0	(0)	0	(0)	0	(0)	0	(0)	1	(50)	0	(0)	0	(0)	0	(0)	0	(0)	0	(0)	1	(50)	0	(0)	0	(0)	0	(0)	2	(0.6)
	V	0	(0)	0	(0)	6	(100)	0	(0)	0	(0)	0	(0)	0	(0)	0	(0)	0	(0)	0	(0)	0	(0)	0	(0)	0	(0)	0	(0)	6	(1.7)
	W	0	(0)	0	(0)	23	(77)	0	(0)	0	(0)	1	(3)	0	(0)	0	(0)	1	(3)	0	(0)	4	(13)	0	(0)	1	(3)	0	(0)	30	(8.4)
	X	0	(0)	0	(0)	1	(25)	0	(0)	0	(0)	0	(0)	0	(0)	0	(0)	0	(0)	0	(0)	2	(50)	0	(0)	1	(25)	0	(0)	4	(1.1)
	ZA	0	(0)	0	(0)	0	(0)	0	(0)	0	(0)	1	(100)	0	(0)	0	(0)	0	(0)	0	(0)	0	(0)	0	(0)	0	(0)	0	(0)	1	(0.3)
	2009 Total		2	(0.6)	5	(1.4)	62	(17.4)	7	(2.0)	12	(3.4)	46	(12.9)	2	(0.6)	5	(1.4)	54	(15.1)	2	(0.6)	126	(35.3)	16	(4.5)	18	(5.0)	0	(0.0)	357
2010	B	0	(0)	0	(0)	0	(0)	0	(0)	0	(0)	0	(0)	0	(0)	0	(0)	1	(100)	0	(0)	0	(0)	0	(0)	0	(0)	0	(0)	1	(0.3)
	C	0	(0)	0	(0)	9	(5)	4	(2)	1	(1)	23	(14)	0	(0)	1	(1)	41	(24)	0	(0)	74	(44)	9	(5)	8	(5)	0	(0)	170	(54.5)
	D	0	(0)	0	(0)	0	(0)	0	(0)	0	(0)	0	(0)	0	(0)	0	(0)	1	(33)	0	(0)	2	(67)	0	(0)	0	(0)	0	(0)	3	(1.0)
	E1	0	(0)	0	(0)	2	(50)	0	(0)	0	(0)	1	(25)	0	(0)	0	(0)	0	(0)	0	(0)	1	(25)	0	(0)	0	(0)	0	(0)	4	(1.3)
	E2	0	(0)	0	(0)	2	(67)	0	(0)	0	(0)	0	(0)	0	(0)	0	(0)	0	(0)	0	(0)	1	(33)	0	(0)	0	(0)	0	(0)	3	(1.0)
	I	0	(0)	0	(0)	0	(0)	0	(0)	1	(100)	0	(0)	0	(0)	0	(0)	0	(0)	0	(0)	0	(0)	0	(0)	0	(0)	0	(0)	1	(0.3)
	K	0	(0)	0	(0)	2	(100)	0	(0)	0	(0)	0	(0)	0	(0)	0	(0)	0	(0)	0	(0)	0	(0)	0	(0)	0	(0)	0	(0)	2	(0.6)
	L	0	(0)	0	(0)	0	(0)	0	(0)	0	(0)	0	(0)	0	(0)	0	(0)	0	(0)	0	(0)	1	(50)	1	(50)	0	(0)	0	(0)	2	(0.6)
	M	0	(0)	0	(0)	0	(0)	0	(0)	0	(0)	1	(100)	0	(0)	0	(0)	0	(0)	0	(0)	0	(0)	0	(0)	0	(0)	0	(0)	1	(0.3)
	P	1	(1)	2	(2)	15	(19)	3	(4)	4	(5)	9	(11)	2	(2)	0	(0)	14	(17)	0	(0)	18	(22)	8	(10)	5	(6)	0	(0)	81	(26.0)
	R	0	(0)	0	(0)	0	(0)	0	(0)	0	(0)	0	(0)	1	(100)	0	(0)	0	(0)	0	(0)	0	(0)	0	(0)	0	(0)	0	(0)	1	(0.3)
	V	1	(13)	0	(0)	1	(13)	0	(0)	2	(25)	2	(25)	0	(0)	0	(0)	0	(0)	0	(0)	0	(0)	1	(13)	1	(13)	0	(0)	8	(2.6)
	W	0	(0)	0	(0)	26	(79)	0	(0)	0	(0)	1	(3)	0	(0)	0	(0)	0	(0)	0	(0)	3	(9)	2	(6)	1	(3)	0	(0)	33	(10.6)
X	0	(0)	0	(0)	1	(50)	0	(0)	0	(0)	0	(0)	0	(0)	0	(0)	0	(0)	0	(0)	1	(50)	0	(0)	0	(0)	0	(0)	2	(0.6)	
2010 Total		2	(0.6)	2	(0.6)	58	(18.6)	7	(2.2)	8	(2.6)	38	(12.2)	2	(0.6)	1	(0.3)	57	(18.3)	0	(0.0)	101	(32.4)	21	(6.7)	15	(4.8)	0	(0.0)	312	
Grand Total		7	(0.7)	14	(1.4)	168	(16.4)	26	(2.5)	32	(3.1)	129	(12.6)	4	(0.4)	6	(0.6)	176	(17.1)	10	(1.0)	350	(34.1)	58	(5.6)	47	(4.6)	0	(0.0)	1,027	

Table 23 Most commonly returned Read Codes for primary reason for admission, 2008 - 2010

Primary Diagnosis	Sex								Total	
	Male		Female		Ambiguous		Unknown			
	n	%	n	%	n	%	n	%	n	%
Acquired scoliosis (X70D3)	45	(37)	78	(63)	0	(0)	0	(0)	123	(12.6)
Bronchiolitis (XSDOK)	57	(60)	38	(40)	0	(0)	0	(0)	95	(9.7)
Discordant ventriculoarterial connection (P51..)	43	(69)	19	(31)	0	(0)	0	(0)	62	(6.4)
Ventricular septal defect (P54..)	31	(53)	28	(47)	0	(0)	0	(0)	59	(6.1)
Tetralogy of Fallot (P52..)	33	(60)	22	(40)	0	(0)	0	(0)	55	(5.6)
Hypoplastic left heart syndrome (P67..)	23	(50)	23	(50)	0	(0)	0	(0)	46	(4.7)
Aortic coarctation (P71..)	27	(59)	19	(41)	0	(0)	0	(0)	46	(4.7)
Meningococcal septicaemia (A362.)	28	(65)	15	(35)	0	(0)	0	(0)	43	(4.4)
Injury of head region (XA003)	34	(81)	8	(19)	0	(0)	0	(0)	42	(4.3)
Status epilepticus (X007B)	27	(64)	15	(36)	0	(0)	0	(0)	42	(4.3)
Atrioventricular septal defect & common atriovent junction (X77wc)	15	(37)	26	(63)	0	(0)	0	(0)	41	(4.2)
Double outlet right ventricle (P511.)	19	(51)	18	(49)	0	(0)	0	(0)	37	(3.8)
Sepsis (X70VZ)	22	(63)	13	(37)	0	(0)	0	(0)	35	(3.6)
Respiratory failure (XM09V)	14	(40)	21	(60)	0	(0)	0	(0)	35	(3.6)
Atrial septal defect (X77vY)	12	(38)	20	(63)	0	(0)	0	(0)	32	(3.3)
Febrile convulsion (XM03I)	14	(56)	11	(44)	0	(0)	0	(0)	25	(2.6)
Acute lower respiratory tract infection (XE0Xt)	10	(48)	11	(52)	0	(0)	0	(0)	21	(2.2)
Acute laryngotracheobronchitis (Xa0IW)	13	(68)	6	(32)	0	(0)	0	(0)	19	(1.9)
Pneumonia (X100E)	9	(50)	9	(50)	0	(0)	0	(0)	18	(1.8)
Pulmonary trunk atresia (X780E)	8	(44)	10	(56)	0	(0)	0	(0)	18	(1.8)
Respiratory syncytial virus infection (Xa0BK)	10	(59)	7	(41)	0	(0)	0	(0)	17	(1.7)
Patent ductus arteriosus (P70..)	7	(41)	10	(59)	0	(0)	0	(0)	17	(1.7)
Aortic stenosis (X2011)	9	(56)	7	(44)	0	(0)	0	(0)	16	(1.6)
Adult respiratory distress syndrome (XE0Ye)	8	(50)	8	(50)	0	(0)	0	(0)	16	(1.6)
Acute bronchiolitis due to respiratory syncytial virus (H0615)	10	(67)	5	(33)	0	(0)	0	(0)	15	(1.5)
Total	528	(54.2)	447	(45.8)	0	(0.0)	0	(0.0)	975	

Table 24 Most commonly returned Read Codes for primary reason for 'unplanned - following surgery' admissions, 2008 - 2010

Primary Diagnosis	Sex								Total	
	Male		Female		Ambiguous		Unknown			
	n	%	n	%	n	%	n	%	n	%
Empyema (XaE01)	0	(0)	4	(100)	0	(0)	0	(0)	4	(11.8)
Hypoplastic left heart syndrome (P67..)	2	(67)	1	(33)	0	(0)	0	(0)	3	(8.8)
Idiopathic scoliosis (N3730)	0	(0)	2	(100)	0	(0)	0	(0)	2	(5.9)
Injury of head region (XA003)	2	(100)	0	(0)	0	(0)	0	(0)	2	(5.9)
Post-upper airway obstruction pulmonary oedema (X102c)	0	(0)	2	(100)	0	(0)	0	(0)	2	(5.9)
Ventricular septal defect (P54..)	0	(0)	2	(100)	0	(0)	0	(0)	2	(5.9)
End stage renal failure (X30J0)	0	(0)	1	(100)	0	(0)	0	(0)	1	(2.9)
Enterocutaneous fistula (J57y1)	0	(0)	1	(100)	0	(0)	0	(0)	1	(2.9)
Extradural haematoma (Xa0AC)	1	(100)	0	(0)	0	(0)	0	(0)	1	(2.9)
Failure of cartilage graft (Xa1ku)	1	(100)	0	(0)	0	(0)	0	(0)	1	(2.9)
Fit (in known epileptic) NOS (XaC34)	1	(100)	0	(0)	0	(0)	0	(0)	1	(2.9)
Foreign body in bronchus (Xa26U)	1	(100)	0	(0)	0	(0)	0	(0)	1	(2.9)
Acute respiratory failure (H590.)	1	(100)	0	(0)	0	(0)	0	(0)	1	(2.9)
Aortic coarctation (P71..)	0	(0)	1	(100)	0	(0)	0	(0)	1	(2.9)
Bleeding from tonsillar bed (X76bB)	1	(100)	0	(0)	0	(0)	0	(0)	1	(2.9)
Chylothorax (X101G)	1	(100)	0	(0)	0	(0)	0	(0)	1	(2.9)
Cleft palate NOS (P90z.)	1	(100)	0	(0)	0	(0)	0	(0)	1	(2.9)
Coagulation disorder (D30..)	1	(100)	0	(0)	0	(0)	0	(0)	1	(2.9)
Collapse of lung (XaBNU)	1	(100)	0	(0)	0	(0)	0	(0)	1	(2.9)
Congenital aortic valve stenosis (P63..)	1	(100)	0	(0)	0	(0)	0	(0)	1	(2.9)
Congenital cystic adenomatoid malformation of the lung (X782o)	1	(100)	0	(0)	0	(0)	0	(0)	1	(2.9)
Discordant ventriculoarterial connection (P51..)	1	(100)	0	(0)	0	(0)	0	(0)	1	(2.9)
Disorder of liver (X306R)	1	(100)	0	(0)	0	(0)	0	(0)	1	(2.9)
Disorders of cerebrospinal fluid and intracranial pressure (X00EC)	0	(0)	1	(100)	0	(0)	0	(0)	1	(2.9)
Double inlet left ventricle (X77ty)	1	(100)	0	(0)	0	(0)	0	(0)	1	(2.9)
Total	19	(55.9)	15	(44.1)	0	(0.0)	0	(0.0)	34	

Table 25 Most commonly returned Read Codes for primary reason for 'unplanned - other' admission, 2008 - 2010

Primary Diagnosis	Sex								Total	
	Male		Female		Ambiguous		Unknown			
	n	%	n	%	n	%	n	%	n	%
Bronchiolitis (XSDOK)	57	(61)	37	(39)	0	(0)	0	(0)	94	(17.3)
Meningococcal septicaemia (A362.)	28	(65)	15	(35)	0	(0)	0	(0)	43	(7.9)
Status epilepticus (X007B)	27	(66)	14	(34)	0	(0)	0	(0)	41	(7.6)
Injury of head region (XA003)	31	(79)	8	(21)	0	(0)	0	(0)	39	(7.2)
Sepsis (X70VZ)	22	(65)	12	(35)	0	(0)	0	(0)	34	(6.3)
Respiratory failure (XM09V)	10	(33)	20	(67)	0	(0)	0	(0)	30	(5.5)
Febrile convulsion (XM03I)	14	(56)	11	(44)	0	(0)	0	(0)	25	(4.6)
Discordant ventriculoarterial connection (P51..)	17	(74)	6	(26)	0	(0)	0	(0)	23	(4.2)
Acute lower respiratory tract infection (XE0Xt)	9	(47)	10	(53)	0	(0)	0	(0)	19	(3.5)
Acute laryngotracheobronchitis (Xa0IW)	12	(67)	6	(33)	0	(0)	0	(0)	18	(3.3)
Hypoplastic left heart syndrome (P67..)	7	(41)	10	(59)	0	(0)	0	(0)	17	(3.1)
Pneumonia (X100E)	9	(53)	8	(47)	0	(0)	0	(0)	17	(3.1)
Acute bronchiolitis due to respiratory syncytial virus (H0615)	10	(67)	5	(33)	0	(0)	0	(0)	15	(2.8)
Adult respiratory distress syndrome (XE0Ye)	7	(47)	8	(53)	0	(0)	0	(0)	15	(2.8)
Aortic coarctation (P71..)	6	(43)	8	(57)	0	(0)	0	(0)	14	(2.6)
Respiratory syncytial virus infection (Xa0BK)	7	(50)	7	(50)	0	(0)	0	(0)	14	(2.6)
Situation-related seizures (X006g)	7	(54)	6	(46)	0	(0)	0	(0)	13	(2.4)
Meningitis (X000H)	6	(60)	4	(40)	0	(0)	0	(0)	10	(1.8)
Cardiac arrest (XE0V5)	8	(80)	2	(20)	0	(0)	0	(0)	10	(1.8)
Fit (in known epileptic) NOS (XaC34)	6	(67)	3	(33)	0	(0)	0	(0)	9	(1.7)
Meningococcal meningitis (F005.)	3	(33)	6	(67)	0	(0)	0	(0)	9	(1.7)
Asthma (H33..)	3	(33)	6	(67)	0	(0)	0	(0)	9	(1.7)
Acute bronchiolitis (H061.)	8	(100)	0	(0)	0	(0)	0	(0)	8	(1.5)
Aortic stenosis (X2011)	6	(75)	2	(25)	0	(0)	0	(0)	8	(1.5)
Status asthmaticus (X102D)	3	(38)	5	(63)	0	(0)	0	(0)	8	(1.5)
Total	323	(59.6)	219	(40.4)	0	(0.0)	0	(0.0)	542	

Table 26 Retrievals by team type and age, 2008 - 2010

Retrieval Team	Age Group (Years)								Total	
	<1		1-4		5-10		11-15			
	n	%	n	%	n	%	n	%	n	%
Own team	284	(53)	146	(27)	53	(10)	51	(10)	534	(78.3)
Other specialist team (PICU)	29	(74)	3	(8)	4	(10)	3	(8)	39	(5.7)
Other specialist team (non-PICU)	54	(71)	9	(12)	5	(7)	8	(11)	76	(11.1)
Non-specialist team	16	(48)	7	(21)	3	(9)	7	(21)	33	(4.8)
Total	383	(56.2)	165	(24.2)	65	(9.5)	69	(10.1)	682	

Figure 26 Retrievals by team type, 2008 - 2010

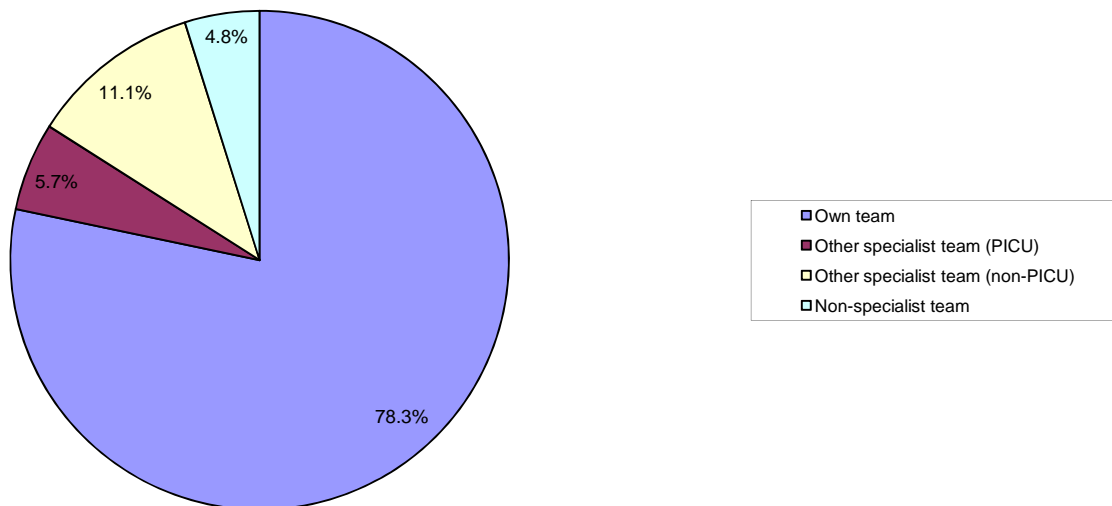


Table 27 'Non-specialist team' retrievals by diagnostic group and age, 2008 - 2010

Diagnostic Group	Age Group (Years)								Total	
	<1		1-4		5-10		11-15			
	n	%	n	%	n	%	n	%	n	%
Cardiovascular	9	(90)	1	(10)	0	(0)	0	(0)	10	(30.3)
Endocrine / metabolic	1	(100)	0	(0)	0	(0)	0	(0)	1	(3.0)
Gastrointestinal	1	(100)	0	(0)	0	(0)	0	(0)	1	(3.0)
Infection	1	(100)	0	(0)	0	(0)	0	(0)	1	(3.0)
Neurological	0	(0)	1	(50)	0	(0)	1	(50)	2	(6.1)
Respiratory	3	(38)	2	(25)	1	(13)	2	(25)	8	(24.2)
Trauma	0	(0)	2	(29)	1	(14)	4	(57)	7	(21.2)
Other	1	(33)	1	(33)	1	(33)	0	(0)	3	(9.1)
Total	16	(48.5)	7	(21.2)	3	(9.1)	7	(21.2)	33	

Table 28 Retrievals by retrieval type by NHS trust, 2008 - 2010

Admission year	NHS Trust	Own team		Other specialist team (PICU)		Other specialist team (non-PICU)		Non-specialist team		Unknown		Total	
		n	%	n	%	n	%	n	%	n	%	n	%
2008	C	118	(89)	4	(3)	5	(4)	5	(4)	0	(0)	132	(54.3)
	D	3	(75)	0	(0)	0	(0)	1	(25)	0	(0)	4	(1.6)
	E1	0	(0)	1	(100)	0	(0)	0	(0)	0	(0)	1	(0.4)
	E2	0	(0)	3	(100)	0	(0)	0	(0)	0	(0)	3	(1.2)
	F	2	(40)	2	(40)	1	(20)	0	(0)	0	(0)	5	(2.1)
	L	5	(100)	0	(0)	0	(0)	0	(0)	0	(0)	5	(2.1)
	P	44	(67)	0	(0)	12	(18)	10	(15)	0	(0)	66	(27.2)
	R	1	(100)	0	(0)	0	(0)	0	(0)	0	(0)	1	(0.4)
	U	0	(0)	1	(100)	0	(0)	0	(0)	0	(0)	1	(0.4)
	V	3	(50)	0	(0)	2	(33)	1	(17)	0	(0)	6	(2.5)
	W	14	(82)	1	(6)	0	(0)	2	(12)	0	(0)	17	(7.0)
X	2	(100)	0	(0)	0	(0)	0	(0)	0	(0)	2	(0.8)	
2008 Total		192	(79.0)	12	(4.9)	20	(8.2)	19	(7.8)	0	(0.0)	243	
2009	C	132	(92)	3	(2)	4	(3)	4	(3)	0	(0)	143	(60.6)
	E1	0	(0)	1	(100)	0	(0)	0	(0)	0	(0)	1	(0.4)
	F	1	(25)	2	(50)	0	(0)	1	(25)	0	(0)	4	(1.7)
	H	0	(0)	1	(100)	0	(0)	0	(0)	0	(0)	1	(0.4)
	I	1	(100)	0	(0)	0	(0)	0	(0)	0	(0)	1	(0.4)
	L	3	(100)	0	(0)	0	(0)	0	(0)	0	(0)	3	(1.3)
	P	24	(44)	1	(2)	28	(52)	1	(2)	0	(0)	54	(22.9)
	R	1	(50)	0	(0)	0	(0)	1	(50)	0	(0)	2	(0.8)
	V	1	(50)	0	(0)	1	(50)	0	(0)	0	(0)	2	(0.8)
	W	11	(55)	5	(25)	1	(5)	3	(15)	0	(0)	20	(8.5)
	X	4	(100)	0	(0)	0	(0)	0	(0)	0	(0)	4	(1.7)
ZA	1	(100)	0	(0)	0	(0)	0	(0)	0	(0)	1	(0.4)	
2009 Total		179	(75.8)	13	(5.5)	34	(14.4)	10	(4.2)	0	(0.0)	236	
2010	C	104	(91)	5	(4)	4	(4)	1	(1)	0	(0)	114	(56.2)
	D	2	(67)	1	(33)	0	(0)	0	(0)	0	(0)	3	(1.5)
	E1	0	(0)	1	(100)	0	(0)	0	(0)	0	(0)	1	(0.5)
	E2	0	(0)	2	(100)	0	(0)	0	(0)	0	(0)	2	(1.0)
	F	0	(0)	2	(100)	0	(0)	0	(0)	0	(0)	2	(1.0)
	K	0	(0)	0	(0)	1	(100)	0	(0)	0	(0)	1	(0.5)
	L	2	(100)	0	(0)	0	(0)	0	(0)	0	(0)	2	(1.0)
	P	42	(70)	2	(3)	16	(27)	0	(0)	0	(0)	60	(29.6)
	R	1	(100)	0	(0)	0	(0)	0	(0)	0	(0)	1	(0.5)
	V	3	(100)	0	(0)	0	(0)	0	(0)	0	(0)	3	(1.5)
	W	7	(58)	1	(8)	1	(8)	3	(25)	0	(0)	12	(5.9)
X	2	(100)	0	(0)	0	(0)	0	(0)	0	(0)	2	(1.0)	
2010 Total		163	(80.3)	14	(6.9)	22	(10.8)	4	(2.0)	0	(0.0)	203	
Grand Total		534	(78.3)	39	(5.7)	76	(11.1)	33	(4.8)	0	(0.0)	682	

Table 29 Interventions received by NHS trust, 2008 - 2010

Admission year	NHS Trust	Invasive Ventilation		Non-Invasive Ventilation		Intervention				IV Vasoactive Drugs		LVAD		ICP Device		Renal Support		Admissions	
		n	%	n	%	n	%	n	%	n	%	n	%	n	%	n	%	n	%
2008	C	255	(85)	48	(16)	4	(1)	0	(0)	53	(18)	0	(0)	8	(3)	9	(3)	301	(47.3)
	D	5	(100)	0	(0)	0	(0)	0	(0)	1	(20)	0	(0)	1	(20)	0	(0)	5	(0.8)
	E1	8	(89)	1	(11)	1	(11)	1	(11)	4	(44)	0	(0)	0	(0)	0	(0)	9	(1.4)
	E2	6	(86)	1	(14)	0	(0)	3	(43)	5	(71)	0	(0)	0	(0)	0	(0)	7	(1.1)
	F	5	(36)	2	(14)	0	(0)	0	(0)	4	(29)	0	(0)	0	(0)	0	(0)	14	(2.2)
	H	0	(0)	0	(0)	0	(0)	0	(0)	0	(0)	0	(0)	0	(0)	0	(0)	1	(0.2)
	K	2	(100)	0	(0)	0	(0)	0	(0)	2	(100)	0	(0)	0	(0)	1	(50)	2	(0.3)
	L	4	(27)	4	(27)	0	(0)	0	(0)	4	(27)	0	(0)	0	(0)	0	(0)	15	(2.4)
	N	2	(100)	0	(0)	0	(0)	0	(0)	0	(0)	0	(0)	0	(0)	0	(0)	2	(0.3)
	P	113	(85)	8	(6)	3	(2)	0	(0)	50	(38)	0	(0)	5	(4)	1	(1)	133	(20.9)
	R	1	(100)	0	(0)	0	(0)	0	(0)	0	(0)	0	(0)	0	(0)	0	(0)	1	(0.2)
	U	1	(100)	1	(100)	0	(0)	0	(0)	1	(100)	0	(0)	0	(0)	0	(0)	1	(0.2)
	V	25	(93)	13	(48)	0	(0)	0	(0)	18	(67)	0	(0)	0	(0)	0	(0)	27	(4.2)
	W	102	(85)	21	(18)	0	(0)	0	(0)	96	(83)	0	(0)	1	(1)	9	(8)	116	(18.2)
X	2	(100)	0	(0)	0	(0)	2	(100)	2	(100)	0	(0)	0	(0)	0	(0)	2	(0.3)	
ZA	0	(0)	0	(0)	0	(0)	0	(0)	0	(0)	0	(0)	0	(0)	0	(0)	1	(0.2)	
2008 Total		531	(83.4)	99	(15.5)	8	(1.3)	6	(0.9)	240	(37.7)	0	(0.0)	15	(2.4)	20	(3.1)	637	
2009	C	291	(88)	37	(11)	5	(2)	0	(0)	55	(17)	0	(0)	8	(2)	6	(2)	330	(50.2)
	D	1	(25)	1	(25)	0	(0)	0	(0)	0	(0)	0	(0)	0	(0)	0	(0)	4	(0.6)
	E1	2	(100)	0	(0)	0	(0)	0	(0)	1	(50)	0	(0)	1	(50)	0	(0)	2	(0.3)
	F	8	(100)	2	(25)	0	(0)	0	(0)	8	(100)	0	(0)	0	(0)	1	(13)	8	(1.2)
	H	1	(100)	0	(0)	0	(0)	0	(0)	0	(0)	0	(0)	0	(0)	0	(0)	1	(0.2)
	I	1	(100)	0	(0)	0	(0)	0	(0)	1	(100)	0	(0)	0	(0)	0	(0)	1	(0.2)
	L	3	(100)	1	(33)	0	(0)	0	(0)	0	(0)	0	(0)	0	(0)	0	(0)	3	(0.5)
	N	1	(100)	0	(0)	0	(0)	0	(0)	0	(0)	0	(0)	0	(0)	0	(0)	1	(0.2)
	O	1	(100)	0	(0)	0	(0)	0	(0)	0	(0)	0	(0)	0	(0)	0	(0)	1	(0.2)
	P	120	(83)	10	(7)	1	(1)	0	(0)	49	(34)	0	(0)	2	(1)	1	(1)	144	(21.9)
	Q	1	(100)	0	(0)	0	(0)	0	(0)	0	(0)	0	(0)	0	(0)	0	(0)	1	(0.2)
	R	1	(50)	0	(0)	0	(0)	0	(0)	1	(50)	0	(0)	0	(0)	0	(0)	2	(0.3)
	V	23	(96)	10	(42)	0	(0)	0	(0)	20	(83)	0	(0)	0	(0)	1	(4)	24	(3.7)
	W	111	(85)	31	(24)	0	(0)	1	(1)	111	(85)	0	(0)	1	(1)	13	(10)	130	(19.8)
X	4	(100)	0	(0)	0	(0)	3	(75)	3	(75)	0	(0)	0	(0)	0	(0)	4	(0.6)	
ZA	1	(100)	0	(0)	0	(0)	1	(100)	1	(100)	0	(0)	0	(0)	0	(0)	1	(0.2)	
2009 Total		570	(86.8)	92	(14.0)	6	(0.9)	5	(0.8)	250	(38.1)	0	(0.0)	12	(1.8)	22	(3.3)	657	
2010	B	0	(0)	0	(0)	0	(0)	0	(0)	0	(0)	0	(0)	0	(0)	0	(0)	1	(0.2)
	C	211	(85)	34	(14)	1	(0)	0	(0)	39	(16)	0	(0)	8	(3)	5	(2)	249	(41.9)
	D	3	(60)	1	(20)	0	(0)	0	(0)	1	(20)	0	(0)	0	(0)	0	(0)	5	(0.8)
	E1	8	(80)	4	(40)	0	(0)	0	(0)	2	(20)	0	(0)	0	(0)	1	(10)	10	(1.7)
	E2	5	(83)	1	(17)	0	(0)	1	(17)	5	(83)	1	(17)	0	(0)	0	(0)	6	(1.0)
	F	4	(80)	1	(20)	0	(0)	0	(0)	5	(100)	0	(0)	0	(0)	2	(40)	5	(0.8)
	I	1	(100)	0	(0)	0	(0)	0	(0)	0	(0)	0	(0)	0	(0)	0	(0)	1	(0.2)
	K	2	(67)	0	(0)	0	(0)	0	(0)	3	(100)	1	(33)	0	(0)	0	(0)	3	(0.5)
	L	1	(33)	1	(33)	0	(0)	0	(0)	1	(33)	0	(0)	0	(0)	0	(0)	3	(0.5)
	M	1	(100)	0	(0)	0	(0)	0	(0)	0	(0)	0	(0)	0	(0)	0	(0)	1	(0.2)
	O	0	(0)	0	(0)	0	(0)	0	(0)	0	(0)	0	(0)	0	(0)	0	(0)	1	(0.2)
	P	124	(86)	17	(12)	1	(1)	1	(1)	70	(48)	0	(0)	4	(3)	7	(5)	145	(24.4)
	R	1	(100)	0	(0)	0	(0)	0	(0)	1	(100)	0	(0)	0	(0)	0	(0)	1	(0.2)
	U	0	(0)	1	(100)	0	(0)	0	(0)	0	(0)	0	(0)	0	(0)	0	(0)	1	(0.2)
V	20	(91)	3	(14)	0	(0)	0	(0)	18	(82)	0	(0)	0	(0)	1	(5)	22	(3.7)	
W	121	(88)	27	(20)	0	(0)	0	(0)	111	(80)	0	(0)	0	(0)	13	(9)	138	(23.2)	
X	2	(100)	0	(0)	0	(0)	0	(0)	2	(100)	0	(0)	0	(0)	0	(0)	2	(0.3)	
2010 Total		504	(84.8)	90	(15.2)	2	(0.3)	2	(0.3)	258	(43.4)	2	(0.3)	12	(2.0)	29	(4.9)	594	
Grand Total		1,605	(85.0)	281	(14.9)	16	(0.8)	13	(0.7)	748	(39.6)	2	(0.1)	39	(2.1)	71	(3.8)	1,888	

Table 30 Admissions by ventilation status and age, 2008 - 2010

Ventilation Status	Age Group (Years)								Total	
	<1		1-4		5-10		11-15			
	n	%	n	%	n	%	n	%	n	%
Invasive only	632	(46)	369	(27)	156	(11)	211	(15)	1,368	(72.5)
Non-invasive only	24	(55)	8	(18)	2	(5)	10	(23)	44	(2.3)
Both	157	(66)	34	(14)	19	(8)	27	(11)	237	(12.6)
Neither	82	(34)	63	(26)	39	(16)	55	(23)	239	(12.7)
Total	895	(47.4)	474	(25.1)	216	(11.4)	303	(16.0)	1,888	

Table 31 Admissions by ventilation status by NHS trust, 2008 - 2010

Admission year	NHS Trust	Ventilation Status										Total	
		Invasive only		Non-invasive only		Both		Neither		Unknown			
		n	%	n	%	n	%	n	%	n	%	n	%
2008	C	216	(72)	9	(3)	39	(13)	37	(12)	0	(0)	301	(47.3)
	D	5	(100)	0	(0)	0	(0)	0	(0)	0	(0)	5	(0.8)
	E1	8	(89)	1	(11)	0	(0)	0	(0)	0	(0)	9	(1.4)
	E2	5	(71)	0	(0)	1	(14)	1	(14)	0	(0)	7	(1.1)
	F	4	(29)	1	(7)	1	(7)	8	(57)	0	(0)	14	(2.2)
	H	0	(0)	0	(0)	0	(0)	1	(100)	0	(0)	1	(0.2)
	K	2	(100)	0	(0)	0	(0)	0	(0)	0	(0)	2	(0.3)
	L	3	(20)	3	(20)	1	(7)	8	(53)	0	(0)	15	(2.4)
	N	2	(100)	0	(0)	0	(0)	0	(0)	0	(0)	2	(0.3)
	P	106	(80)	1	(1)	7	(5)	19	(14)	0	(0)	133	(20.9)
	R	1	(100)	0	(0)	0	(0)	0	(0)	0	(0)	1	(0.2)
	U	0	(0)	0	(0)	1	(100)	0	(0)	0	(0)	1	(0.2)
	V	13	(48)	1	(4)	12	(44)	1	(4)	0	(0)	27	(4.2)
	W	81	(70)	0	(0)	21	(18)	14	(12)	0	(0)	116	(18.2)
X	2	(100)	0	(0)	0	(0)	0	(0)	0	(0)	2	(0.3)	
ZA	0	(0)	0	(0)	0	(0)	1	(100)	0	(0)	1	(0.2)	
2008 Total		448	(70.3)	16	(2.5)	83	(13.0)	90	(14.1)	0	(0.0)	637	
2009	C	258	(78)	4	(1)	33	(10)	35	(11)	0	(0)	330	(50.2)
	D	0	(0)	0	(0)	1	(25)	3	(75)	0	(0)	4	(0.6)
	E1	2	(100)	0	(0)	0	(0)	0	(0)	0	(0)	2	(0.3)
	F	6	(75)	0	(0)	2	(25)	0	(0)	0	(0)	8	(1.2)
	H	1	(100)	0	(0)	0	(0)	0	(0)	0	(0)	1	(0.2)
	I	1	(100)	0	(0)	0	(0)	0	(0)	0	(0)	1	(0.2)
	L	2	(67)	0	(0)	1	(33)	0	(0)	0	(0)	3	(0.5)
	N	1	(100)	0	(0)	0	(0)	0	(0)	0	(0)	1	(0.2)
	O	1	(100)	0	(0)	0	(0)	0	(0)	0	(0)	1	(0.2)
	P	114	(79)	4	(3)	6	(4)	20	(14)	0	(0)	144	(21.9)
	Q	1	(100)	0	(0)	0	(0)	0	(0)	0	(0)	1	(0.2)
	R	1	(50)	0	(0)	0	(0)	1	(50)	0	(0)	2	(0.3)
	V	14	(58)	1	(4)	9	(38)	0	(0)	0	(0)	24	(3.7)
	W	81	(62)	1	(1)	30	(23)	18	(14)	0	(0)	130	(19.8)
X	4	(100)	0	(0)	0	(0)	0	(0)	0	(0)	4	(0.6)	
ZA	1	(100)	0	(0)	0	(0)	0	(0)	0	(0)	1	(0.2)	
2009 Total		488	(74.3)	10	(1.5)	82	(12.5)	77	(11.7)	0	(0.0)	657	
2010	B	0	(0)	0	(0)	0	(0)	1	(100)	0	(0)	1	(0.2)
	C	189	(76)	12	(5)	22	(9)	26	(10)	0	(0)	249	(41.9)
	D	2	(40)	0	(0)	1	(20)	2	(40)	0	(0)	5	(0.8)
	E1	4	(40)	0	(0)	4	(40)	2	(20)	0	(0)	10	(1.7)
	E2	4	(67)	0	(0)	1	(17)	1	(17)	0	(0)	6	(1.0)
	F	3	(60)	0	(0)	1	(20)	1	(20)	0	(0)	5	(0.8)
	I	1	(100)	0	(0)	0	(0)	0	(0)	0	(0)	1	(0.2)
	K	2	(67)	0	(0)	0	(0)	1	(33)	0	(0)	3	(0.5)
	L	0	(0)	0	(0)	1	(33)	2	(67)	0	(0)	3	(0.5)
	M	1	(100)	0	(0)	0	(0)	0	(0)	0	(0)	1	(0.2)
	O	0	(0)	0	(0)	0	(0)	1	(100)	0	(0)	1	(0.2)
	P	109	(75)	2	(1)	15	(10)	19	(13)	0	(0)	145	(24.4)
	R	1	(100)	0	(0)	0	(0)	0	(0)	0	(0)	1	(0.2)
	U	0	(0)	1	(100)	0	(0)	0	(0)	0	(0)	1	(0.2)
V	17	(77)	0	(0)	3	(14)	2	(9)	0	(0)	22	(3.7)	
W	97	(70)	3	(2)	24	(17)	14	(10)	0	(0)	138	(23.2)	
X	2	(100)	0	(0)	0	(0)	0	(0)	0	(0)	2	(0.3)	
2010 Total		432	(72.7)	18	(3.0)	72	(12.1)	72	(12.1)	0	(0.0)	594	
Grand Total		1,368	(72.5)	44	(2.3)	237	(12.6)	239	(12.7)	0	(0.0)	1,888	

Table 32 Bed days by age and sex, 2008 - 2010

Age (Years)	Sex								Total	
	Male		Female		Ambiguous		Unknown			
	n	%	n	%	n	%	n	%	n	%
0	3,280	(56)	2,535	(44)	0	(0)	0	(0)	5,815	(58.4)
1	479	(59)	333	(41)	0	(0)	0	(0)	812	(8.2)
2	498	(77)	150	(23)	0	(0)	0	(0)	648	(6.5)
3	186	(57)	139	(43)	0	(0)	0	(0)	325	(3.3)
4	96	(36)	170	(64)	0	(0)	0	(0)	266	(2.7)
5	50	(35)	94	(65)	0	(0)	0	(0)	144	(1.4)
6	59	(29)	145	(71)	0	(0)	0	(0)	204	(2.0)
7	59	(55)	49	(45)	0	(0)	0	(0)	108	(1.1)
8	60	(56)	47	(44)	0	(0)	0	(0)	107	(1.1)
9	84	(72)	33	(28)	0	(0)	0	(0)	117	(1.2)
10	82	(64)	47	(36)	0	(0)	0	(0)	129	(1.3)
11	94	(58)	68	(42)	0	(0)	0	(0)	162	(1.6)
12	83	(47)	95	(53)	0	(0)	0	(0)	178	(1.8)
13	183	(43)	246	(57)	0	(0)	0	(0)	429	(4.3)
14	49	(29)	119	(71)	0	(0)	0	(0)	168	(1.7)
15	160	(46)	187	(54)	0	(0)	0	(0)	347	(3.5)
Total	5,502	(55.2)	4,457	(44.8)	0	(0.0)	0	(0.0)	9,959	

Figure 32 Bed days by age and sex, 2008 - 2010

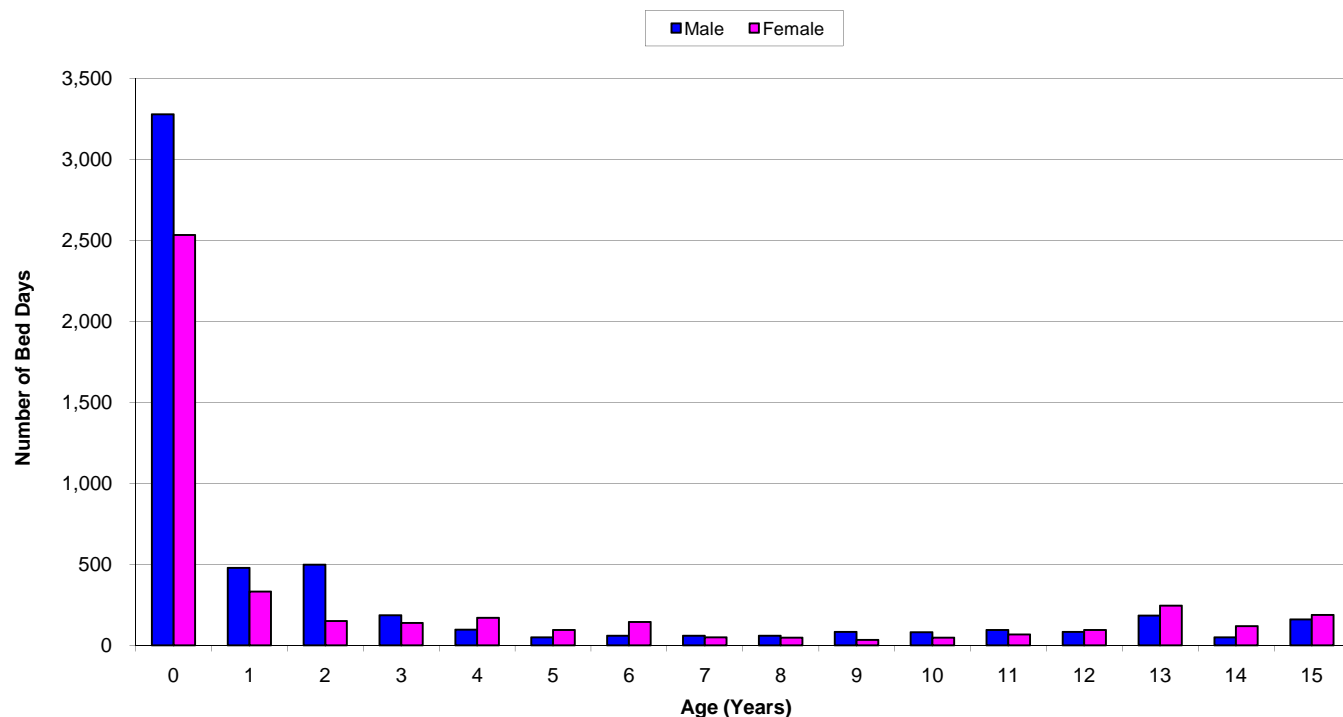


Table 33 Bed days by age by NHS trust, 2008 - 2010

Admission year	NHS Trust	Age Group (Years)								Total	
		<1		1-4		5-10		11-15			
		n	%	n	%	n	%	n	%	n	%
2008	C	631	(45)	365	(26)	163	(12)	253	(18)	1,412	(44.2)
	D	3	(25)	1	(8)	4	(33)	4	(33)	12	(0.4)
	E1	66	(79)	16	(19)	2	(2)	0	(0)	84	(2.6)
	E2	88	(85)	0	(0)	0	(0)	16	(15)	104	(3.3)
	F	60	(94)	4	(6)	0	(0)	0	(0)	64	(2.0)
	H	0	(0)	3	(100)	0	(0)	0	(0)	3	-
	K	0	(0)	4	(31)	0	(0)	9	(69)	13	(0.4)
	L	25	(51)	0	(0)	7	(14)	17	(35)	49	(1.5)
	N	0	(0)	2	(40)	0	(0)	3	(60)	5	(0.2)
	P	299	(42)	168	(24)	45	(6)	199	(28)	711	(22.3)
	R	0	(0)	0	(0)	2	(100)	0	(0)	2	-
	U	3	(100)	0	(0)	0	(0)	0	(0)	3	-
	V	118	(78)	16	(11)	12	(8)	5	(3)	151	(4.7)
	W	373	(66)	90	(16)	61	(11)	37	(7)	561	(17.6)
	X	16	(100)	0	(0)	0	(0)	0	(0)	16	(0.5)
ZA	0	(0)	0	(0)	0	(0)	1	(100)	1	-	
2008 Total		1,682	(52.7)	669	(21.0)	296	(9.3)	544	(17.0)	3,191	
2009	C	745	(49)	381	(25)	125	(8)	259	(17)	1,510	(43.3)
	D	25	(83)	0	(0)	2	(7)	3	(10)	30	(0.9)
	E1	4	(31)	9	(69)	0	(0)	0	(0)	13	(0.4)
	F	76	(100)	0	(0)	0	(0)	0	(0)	76	(2.2)
	H	10	(100)	0	(0)	0	(0)	0	(0)	10	(0.3)
	I	4	(100)	0	(0)	0	(0)	0	(0)	4	(0.1)
	L	9	(38)	11	(46)	4	(17)	0	(0)	24	(0.7)
	N	4	(100)	0	(0)	0	(0)	0	(0)	4	(0.1)
	O	0	(0)	2	(100)	0	(0)	0	(0)	2	-
	P	581	(70)	147	(18)	37	(4)	60	(7)	825	(23.7)
	Q	3	(100)	0	(0)	0	(0)	0	(0)	3	-
	R	5	(100)	0	(0)	0	(0)	0	(0)	5	(0.1)
	V	89	(67)	15	(11)	18	(14)	10	(8)	132	(3.8)
	W	664	(86)	74	(10)	30	(4)	7	(1)	775	(22.2)
	X	64	(100)	0	(0)	0	(0)	0	(0)	64	(1.8)
ZA	11	(100)	0	(0)	0	(0)	0	(0)	11	(0.3)	
2009 Total		2,294	(65.8)	639	(18.3)	216	(6.2)	339	(9.7)	3,488	
2010	B	0	(0)	2	(100)	0	(0)	0	(0)	2	-
	C	463	(42)	331	(30)	137	(12)	184	(17)	1,115	(34.0)
	D	33	(70)	4	(9)	10	(21)	0	(0)	47	(1.4)
	E1	22	(33)	18	(27)	0	(0)	27	(40)	67	(2.0)
	E2	61	(91)	4	(6)	0	(0)	2	(3)	67	(2.0)
	F	12	(22)	43	(78)	0	(0)	0	(0)	55	(1.7)
	I	0	(0)	0	(0)	0	(0)	1	(100)	1	-
	K	0	(0)	76	(100)	0	(0)	0	(0)	76	(2.3)
	L	0	(0)	4	(18)	0	(0)	18	(82)	22	(0.7)
	M	0	(0)	3	(100)	0	(0)	0	(0)	3	-
	O	0	(0)	2	(100)	0	(0)	0	(0)	2	-
	P	500	(59)	141	(17)	92	(11)	121	(14)	854	(26.0)
	R	0	(0)	4	(100)	0	(0)	0	(0)	4	(0.1)
	U	28	(100)	0	(0)	0	(0)	0	(0)	28	(0.9)
	V	62	(70)	7	(8)	10	(11)	9	(10)	88	(2.7)
W	643	(77)	104	(12)	48	(6)	39	(5)	834	(25.4)	
X	15	(100)	0	(0)	0	(0)	0	(0)	15	(0.5)	
2010 Total		1,839	(56.1)	743	(22.7)	297	(9.1)	401	(12.2)	3,280	
Grand Total		5,815	(58.4)	2,051	(20.6)	809	(8.1)	1,284	(12.9)	9,959	

Table 34 Bed census by month, 2008 - 2010

Year	Month	Number in PICU	
		Median	IQR
2008	1	8	6-9
	2	7	5-9
	3	5	4-6
	4	5	4-6
	5	5	3-6
	6	8	7-9
	7	9	8-10
	8	6	4-7
	9	5	2-7
	10	7	6-9
	11	12	11-13
	12	10	9-11
2009	1	10	9-11
	2	9	8-9
	3	9	7-10
	4	9	8-10
	5	9	7-10
	6	8	7-9
	7	6	5-7
	8	5	3-6
	9	7	5-7
	10	5	4-6
	11	8	7-9
	12	10	9-11
2010	1	8	5-10
	2	7	6-8
	3	5	3-6
	4	7	5-8
	5	7	6-8
	6	6	4-7
	7	7	4-8
	8	7	6-8
	9	7	6-8
	10	8	7-9
	11	8	6-10
	12	9	8-10

Figure 34 Bed census by month, 2008 - 2010

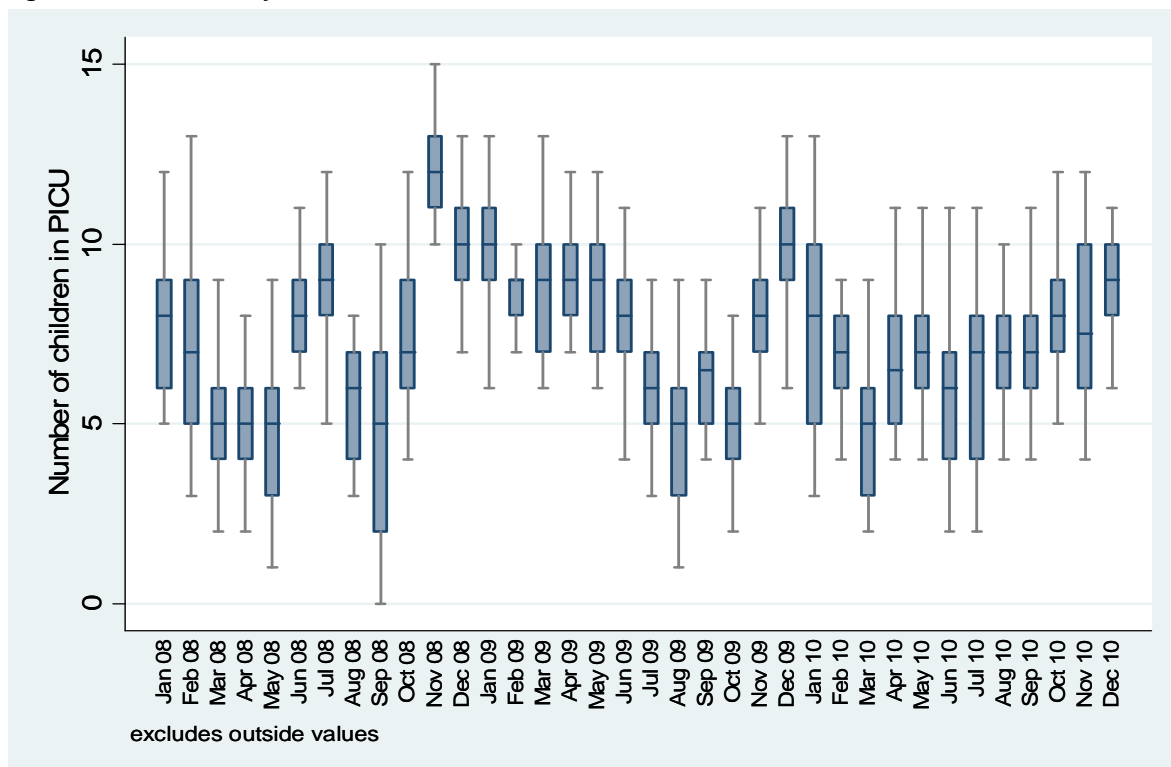
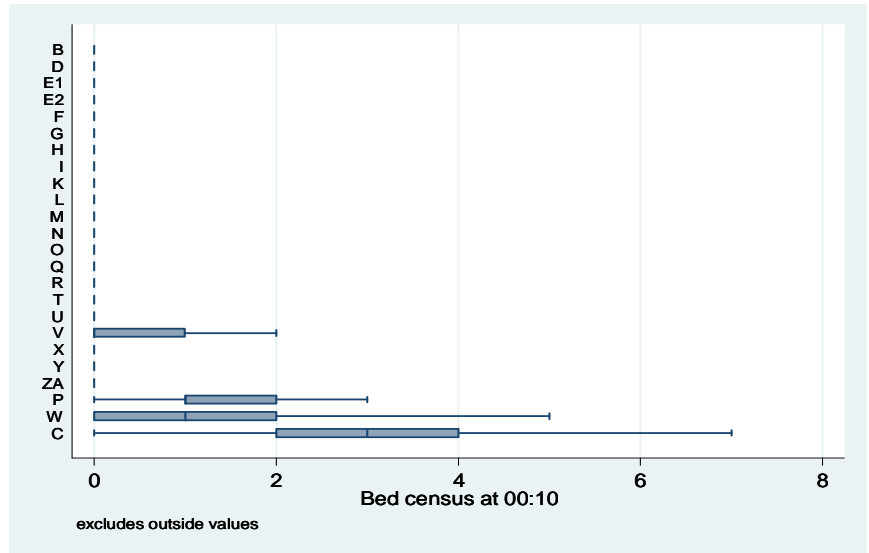


Table 35 Bed census by NHS trust, 2008 - 2010

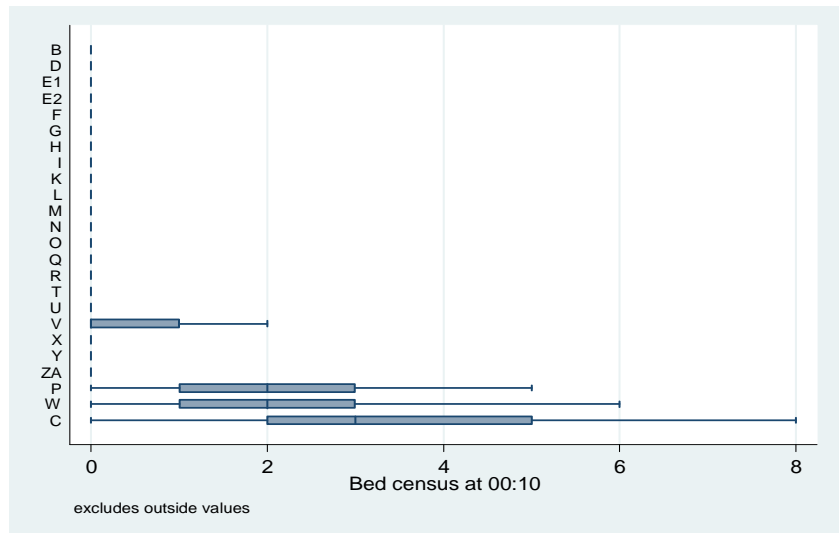
Year	NHS Trust	Number in PICU	
		Median	IQR
2008	B	0	0-0
	C	3	2-4
	D	0	0-0
	E1	0	0-0
	E2	0	0-0
	F	0	0-0
	G	0	0-0
	H	0	0-0
	I	0	0-0
	K	0	0-0
	L	0	0-0
	M	0	0-0
	N	0	0-0
	O	0	0-0
	P	1	1-2
	Q	0	0-0
	R	0	0-0
	T	0	0-0
	U	0	0-0
	V	0	0-1
	W	1	0-2
	X	0	0-0
	Y	0	0-0
	ZA	0	0-0

Figure 35a Bed census by NHS trust, 2008



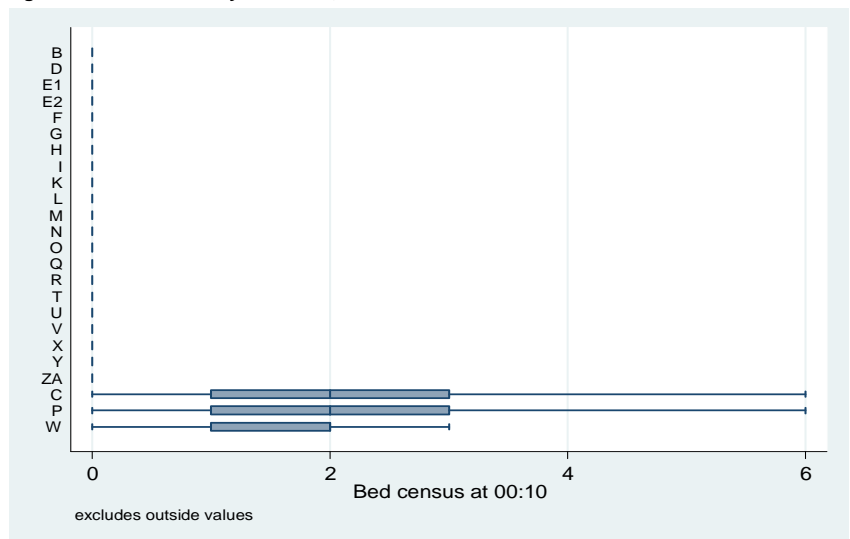
2009	B	0	0-0
	C	3	2-5
	D	0	0-0
	E1	0	0-0
	E2	0	0-0
	F	0	0-0
	G	0	0-0
	H	0	0-0
	I	0	0-0
	K	0	0-0
	L	0	0-0
	M	0	0-0
	N	0	0-0
	O	0	0-0
	P	2	1-3
	Q	0	0-0
	R	0	0-0
	T	0	0-0
	U	0	0-0
	V	0	0-1
	W	2	1-3
	X	0	0-0
	Y	0	0-0
	ZA	0	0-0

Figure 35b Bed census by NHS trust, 2009



2010	B	0	0-0
	C	2	1-3
	D	0	0-0
	E1	0	0-0
	E2	0	0-0
	F	0	0-0
	G	0	0-0
	H	0	0-0
	I	0	0-0
	K	0	0-0
	L	0	0-0
	M	0	0-0
	N	0	0-0
	O	0	0-0
	P	2	1-3
	Q	0	0-0
	R	0	0-0
	T	0	0-0
	U	0	0-0
	V	0	0-0
	W	2	1-2
	X	0	0-0
	Y	0	0-0
	ZA	0	0-0

Figure 35c Bed census by NHS trust, 2010



NB Trusts not having any Welsh children in 2008-10 are omitted from tables and figures

Table 36 Bed activity by month, 2008 - 2010

Year	Month	Bed Activity (Days)	
		Median	IQR
2008	1	10	8-11
	2	8	7-11
	3	6	5-7
	4	7	6-8
	5	7	5-8
	6	10	9-10
	7	10	9-11
	8	8	6-9
	9	7	4-9
	10	9	7-11
	11	14	12-15
	12	12	10-13
2009	1	12	10-13
	2	11	10-13
	3	11	10-13
	4	11	10-12
	5	10	8-11
	6	10	8-12
	7	8	7-9
	8	7	5-8
	9	8	6-9
	10	6	5-8
	11	10	9-11
	12	12	11-15
2010	1	9	6-12
	2	8	7-10
	3	6	5-8
	4	8	6-10
	5	9	7-10
	6	8	6-10
	7	9	6-10
	8	9	7-9
	9	9	8-10
	10	10	9-10
	11	9	7-11
	12	11	10-12

Figure 36 Bed activity by month, 2008 - 2010

