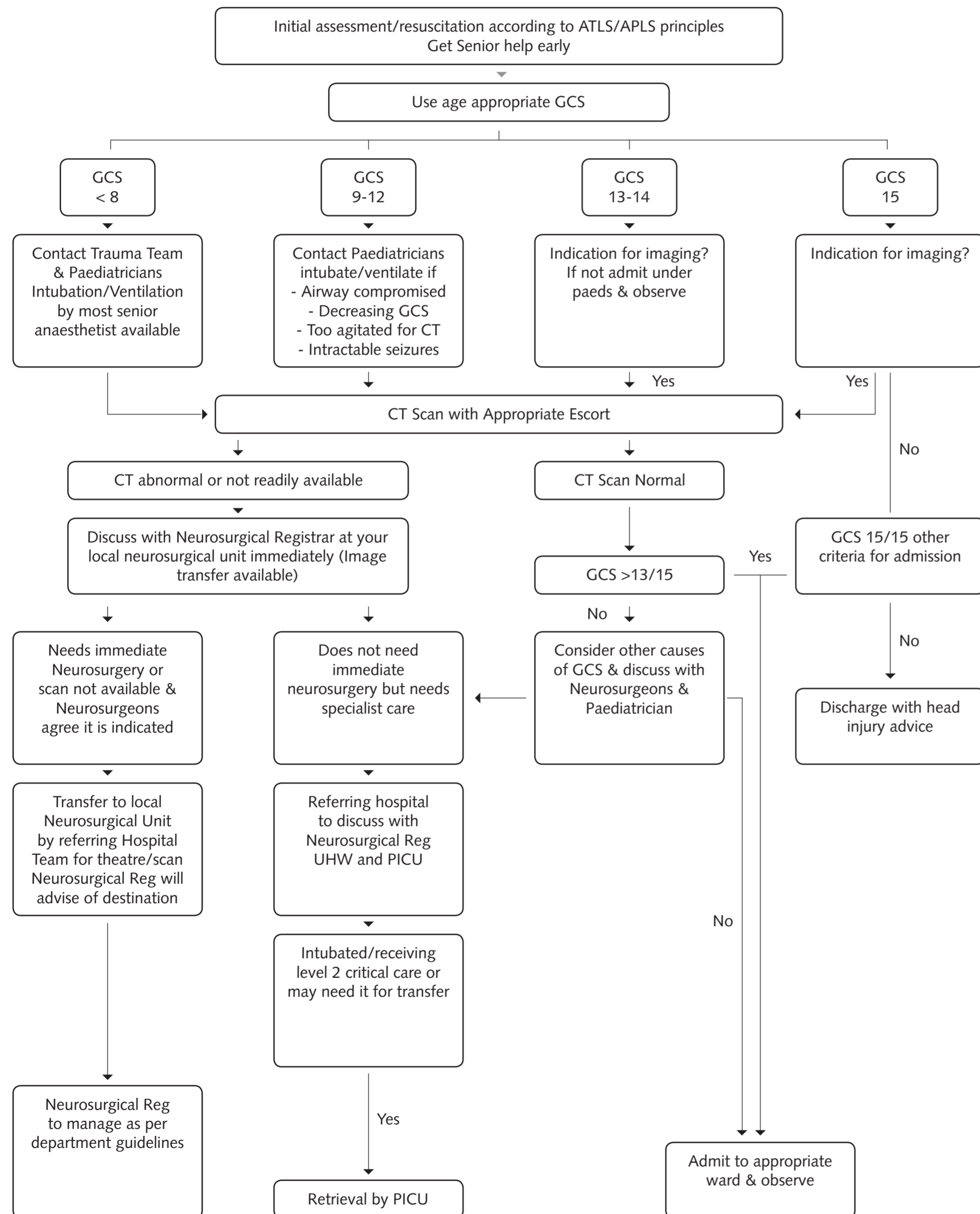


South Wales Guidelines for the Management of Children under 16

Presenting to Hospitals without Neurosurgical Units with Significant Head Injury



KEY NOTES TO ACCOMPANY PAEDIATRIC HEAD INJURY GUIDELINE

- All departments should ensure written guidance is given to junior staff about when to contact their consultant regarding a referral
- All units should be aiming to implement the N.I.C.E. guidelines for imaging (but it is not unusual for children to vomit several times after a minor head injury and clinical judgement is required in regard to this).
- All children should be assessed and managed in accordance with A.T.L.S./A.P.L.S. Guidelines (Remember risk of cervical spine injury)
- All head injured children with GCS <8 must be intubated and ventilated.

Units without on site medical staff/facilities for intubation should initiate all aspects of A.T.L.S./A.P.L.S. management they are capable of, institute a 999 call to the ambulance service and transfer the patient immediately to the nearest unit capable of initiating full A.T.L.S./A.P.L.S. support and performing urgent CT scan. The destination A&E unit should be contacted prior to the departure of the ambulance to allow them to prepare to receive the patient.

- P.I.C.U. should be informed of all children receiving critical care, including those intubated for scan if extubation is being considered.

- Resuscitation of the patient with trauma takes priority over imaging.

- For Neath Port Talbot Hospital and all units West, the "local" neurosurgical unit is Morriston Hospital

- All hospitals in the catchment area can send CT images via WEB1000 to Morriston. When a patient is transferred to either Neurosurgical centre in South Wales, their CT scan films must be sent with them.

- Where transfer by the referring hospital is required, the child should be escorted by someone with all the appropriate skills to deal with potential airway, breathing and circulatory problems. This will usually be a senior anaesthetist.

This guideline will be reviewed (with audit data) in nine months time. If you have any constructive observations to make please forward them to either:

Mr John Martin Consultant Neurosurgeon Morriston
Mr Richard Hatfield Consultant Neurosurgeon U.H.W.
Mr Andy MacNab Paediatric A&E Consultant Morriston

IF YOU ENCOUNTER PROBLEMS WITH THIS GUIDELINE WHILE MANAGING A PATIENT PLEASE DISCUSS THE CASE WITH THE ON-CALL CONSULTANT NEUROSURGEON FOR YOUR LOCAL UNIT

Contact number for South West

Bronglais General Hospital
Neath Port Talbot Hospital
Prince Phillip Hospital
Singleton Hospital
West Wales General Hospital
Withybush Hospital

**PLEASE NOTE:
IF IN ANY
DOUBT PLEASE
CONTACT THE
NEUROSURGICAL
SpR ON CALL AT
EITHER CENTRE**

Contact number for South East

Brecon War Memorial Hospital
Caerphilly & District Miners Hospital
Llandough Hospital
Nevill Hall Hospital
Prince Charles Hospital
Princess of Wales Hospital
Royal Glamorgan Hospital
Royal Gwent Hospital

Contact Neurosurgical SpR at Morriston Hospital via switch:
01792 702222
PICU DIRECT: **02920 745413**

Contact Neurosurgical SpR at UHW Hospital via switch:
02920 747747
PICU DIRECT: **02920 745413**